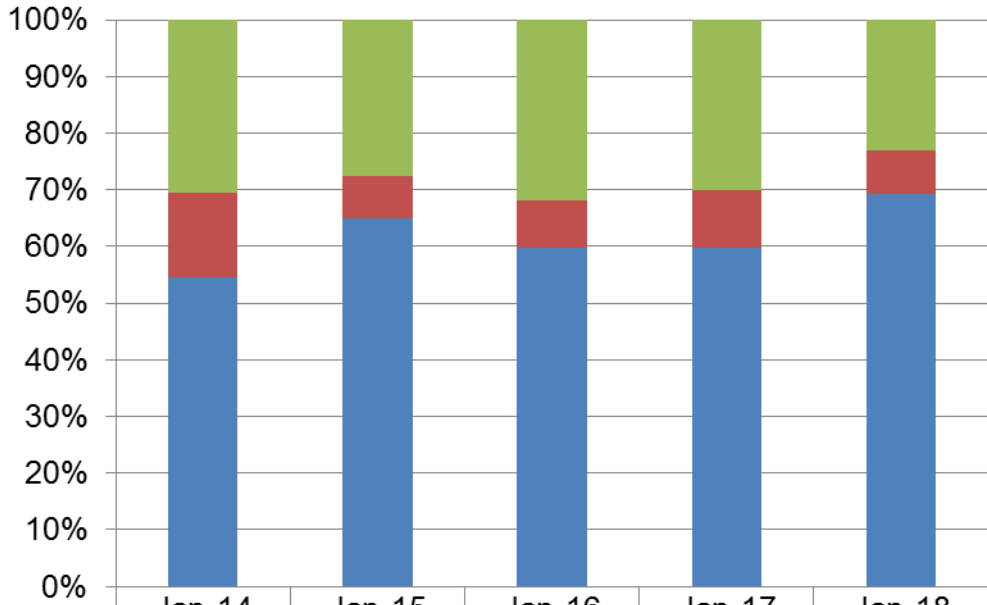


Dane County Humane Society
Rolling Release Rate
&
Save Rate
Overview

January 2018

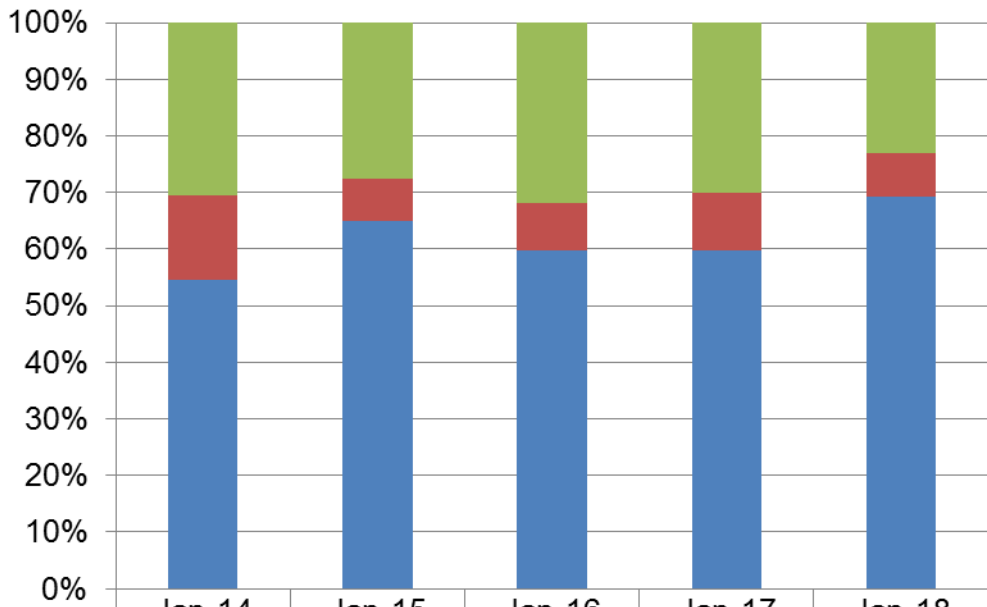
Report prepared by:
Doug Brown
Assistant Executive Director
Dane County Humane Society

Cat Rolling Release Rate January



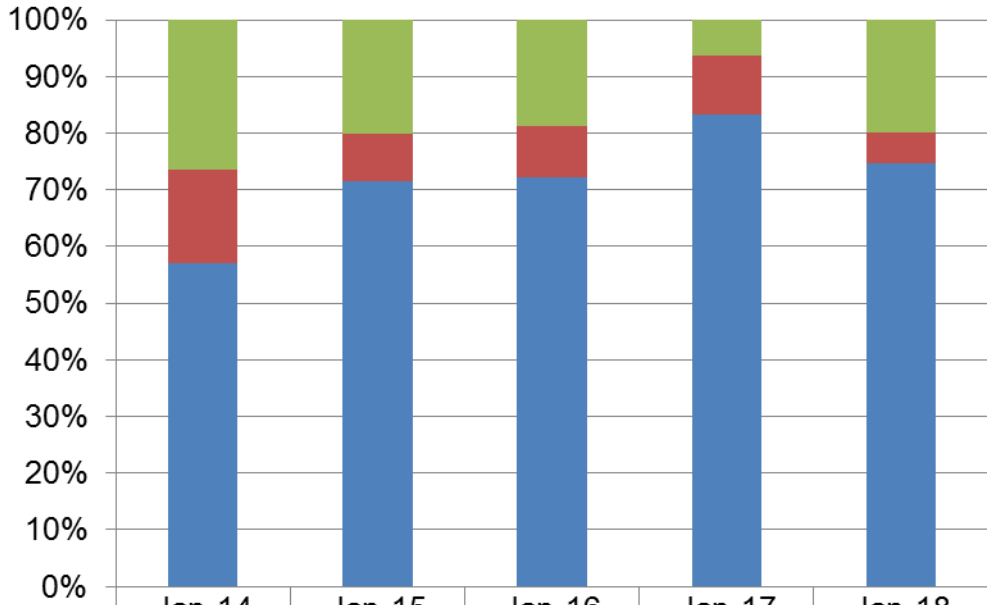
	Jan-14	Jan-15	Jan-16	Jan-17	Jan-18
Sanctuary Rate	30.59%	27.67%	31.84%	30.14%	23.08%
Euthanasia Rate	14.80%	7.33%	8.52%	10.05%	7.69%
Live Release Rate	54.61%	65.00%	59.64%	59.82%	69.23%

Cat Rolling Release Rate Year to Date



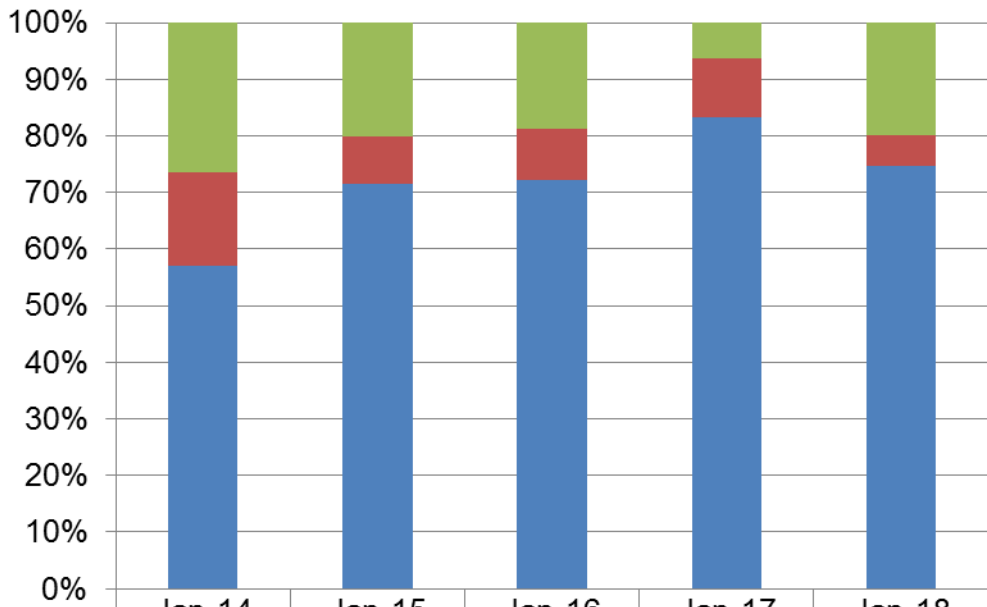
	Jan-14	Jan-15	Jan-16	Jan-17	Jan-18
Sanctuary Rate	30.59%	27.67%	31.84%	30.14%	23.08%
Euthanasia Rate	14.80%	7.33%	8.52%	10.05%	7.69%
Live Release Rate	54.61%	65.00%	59.64%	59.82%	69.23%

Dog Rolling Release Rate January



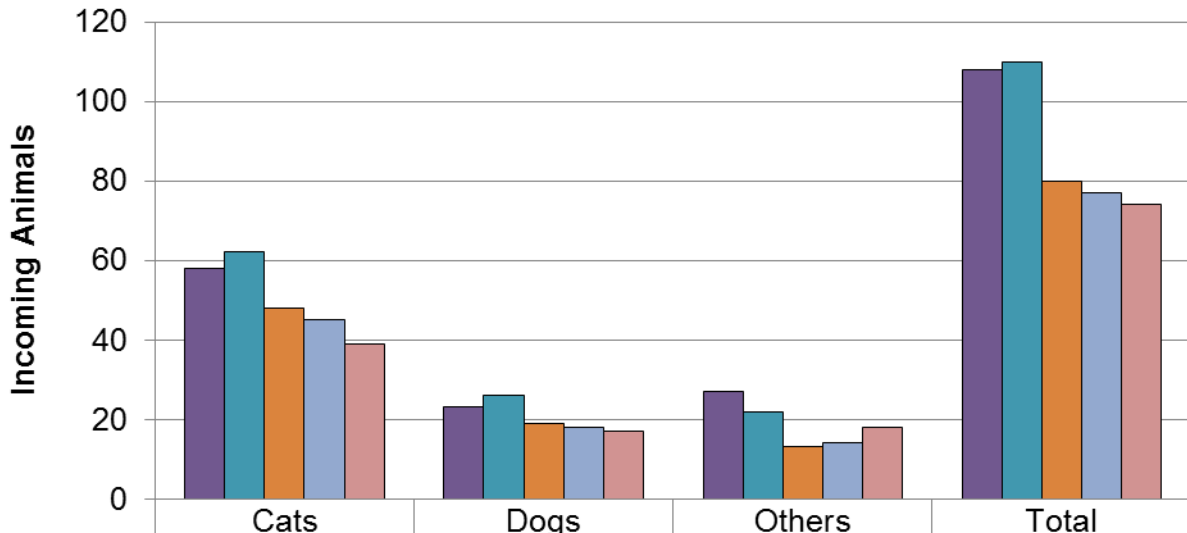
■ Sanctuary Rate	26.43%	20.11%	18.78%	6.41%	19.92%
■ Euthanasia Rate	16.43%	8.38%	9.14%	10.26%	5.51%
■ Live Release Rate	57.14%	71.51%	72.08%	83.33%	74.58%

Dog Rolling Release Rate Year to Date



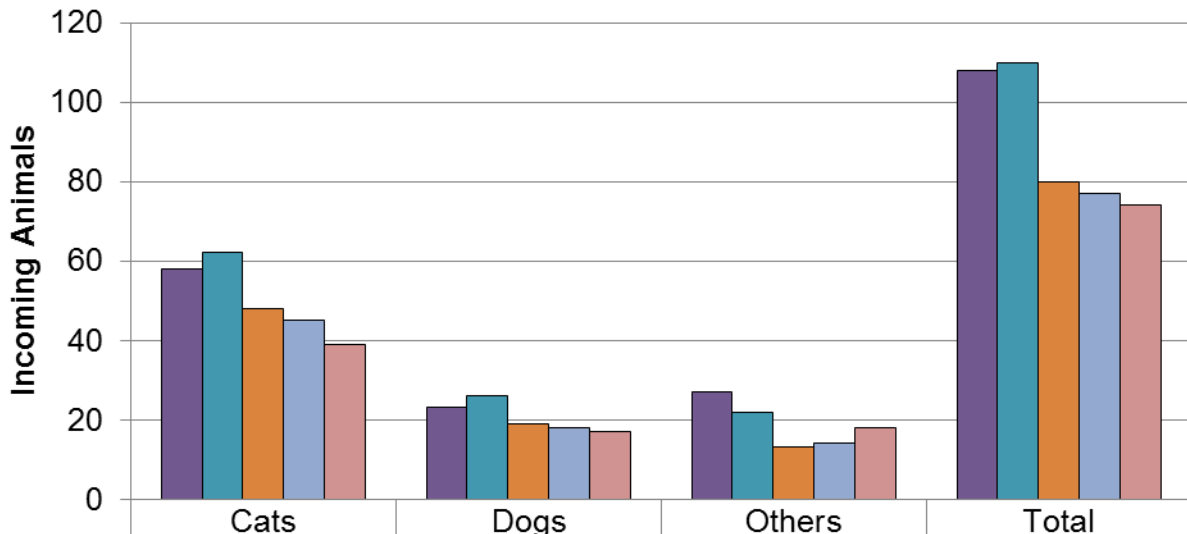
■ Sanctuary Rate	26.43%	20.11%	18.78%	6.41%	19.92%
■ Euthanasia Rate	16.43%	8.38%	9.14%	10.26%	5.51%
■ Live Release Rate	57.14%	71.51%	72.08%	83.33%	74.58%

Surrenders January



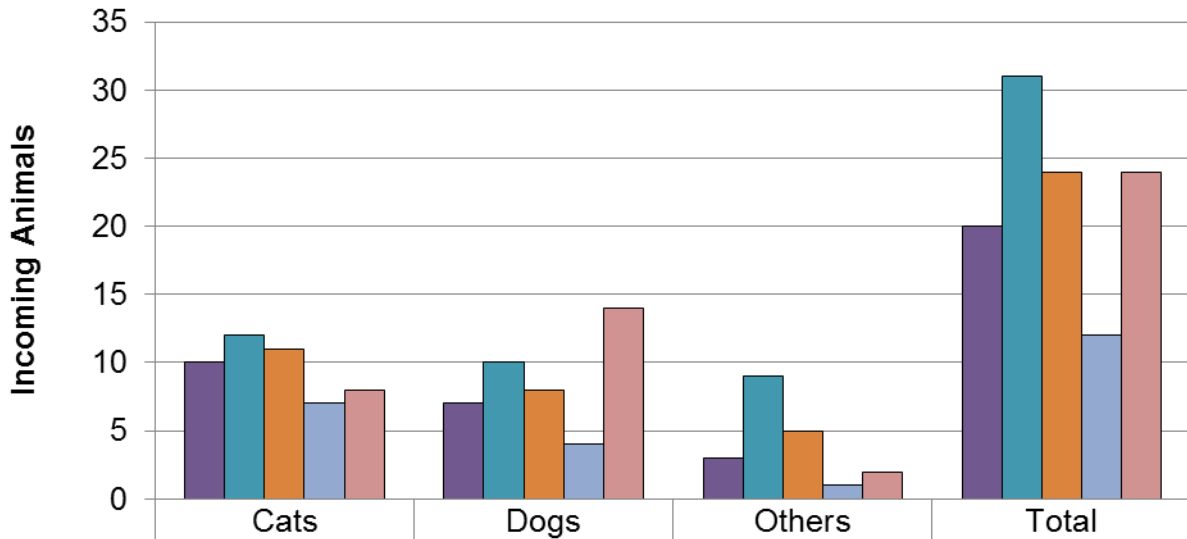
	Cats	Dogs	Others	Total
Jan-14	58	23	27	108
Jan-15	62	26	22	110
Jan-16	48	19	13	80
Jan-17	45	18	14	77
Jan-18	39	17	18	74

Surrenders Year to Date



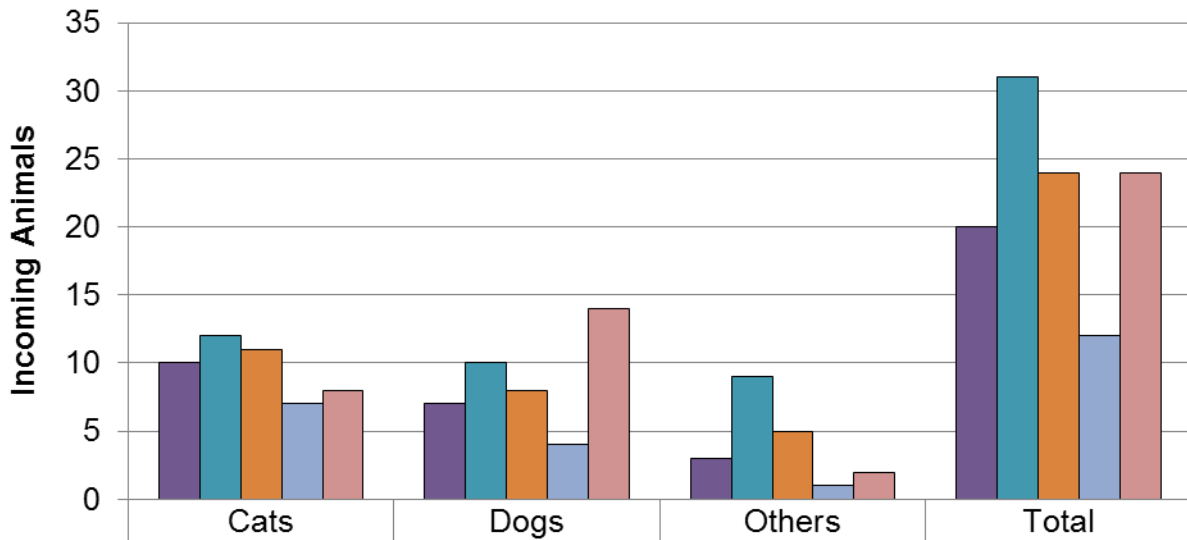
	Cats	Dogs	Others	Total
2014	58	23	27	108
2015	62	26	22	110
2016	48	19	13	80
2017	45	18	14	77
2018	39	17	18	74

Returns January



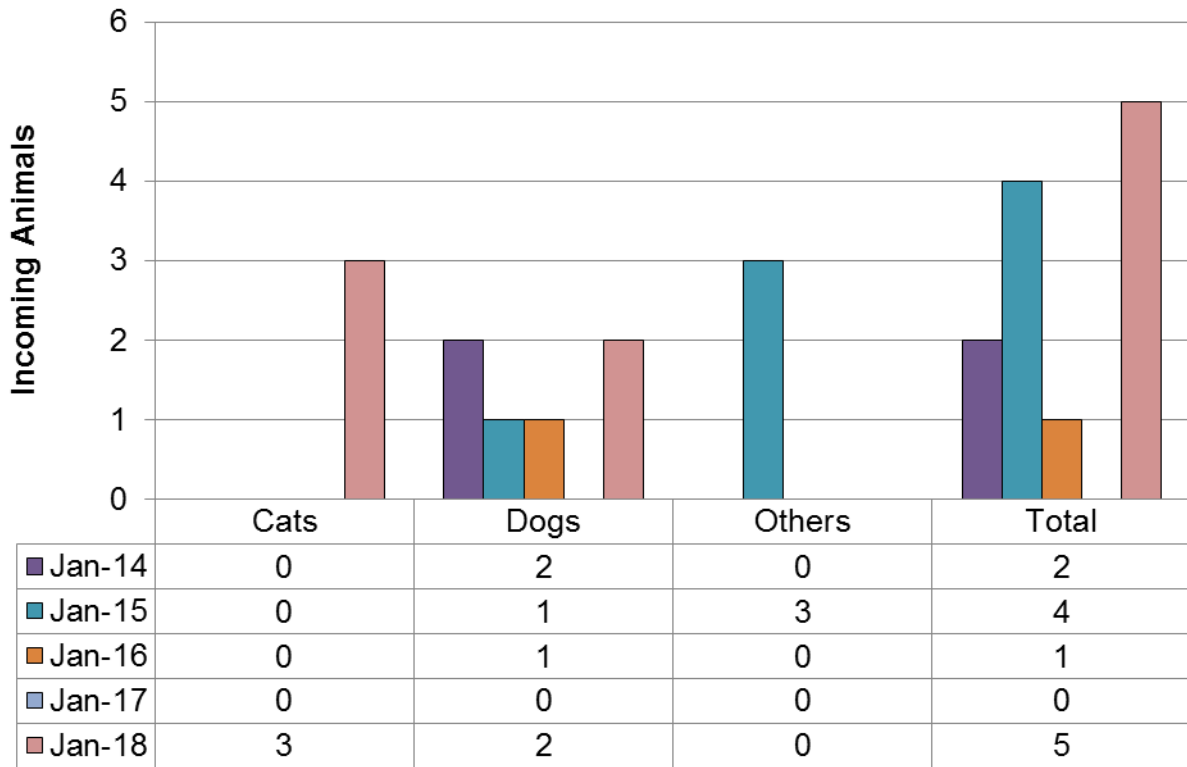
	Cats	Dogs	Others	Total
Jan-14	10	7	3	20
Jan-15	12	10	9	31
Jan-16	11	8	5	24
Jan-17	7	4	1	12
Jan-18	8	14	2	24

Returns Year to Date

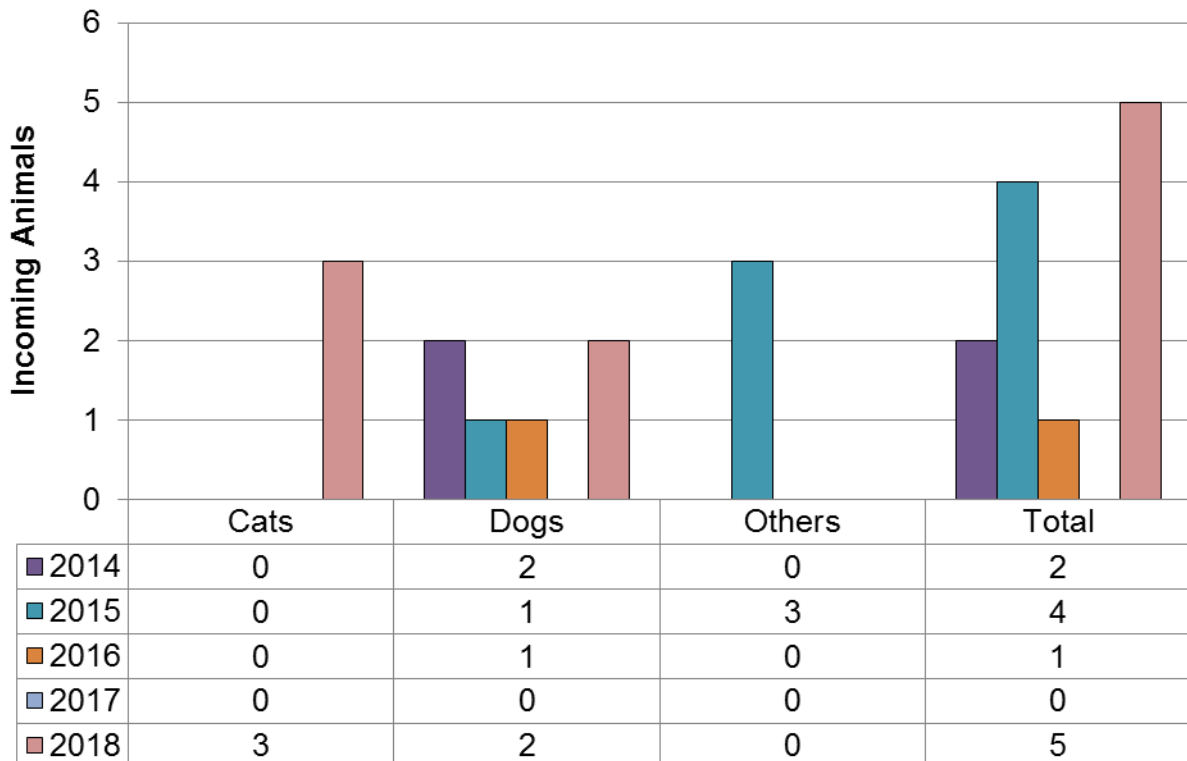


	Cats	Dogs	Others	Total
2014	10	7	3	20
2015	12	10	9	31
2016	11	8	5	24
2017	7	4	1	12
2018	8	14	2	24

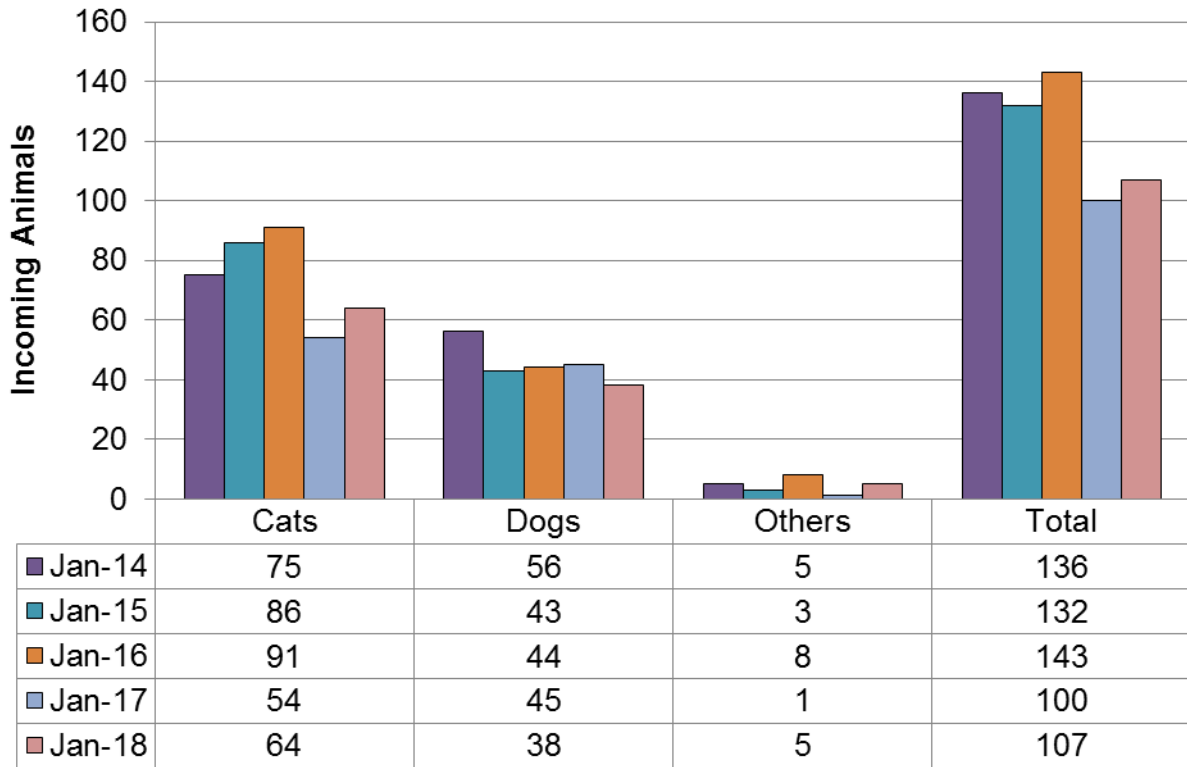
Seized / Custody January



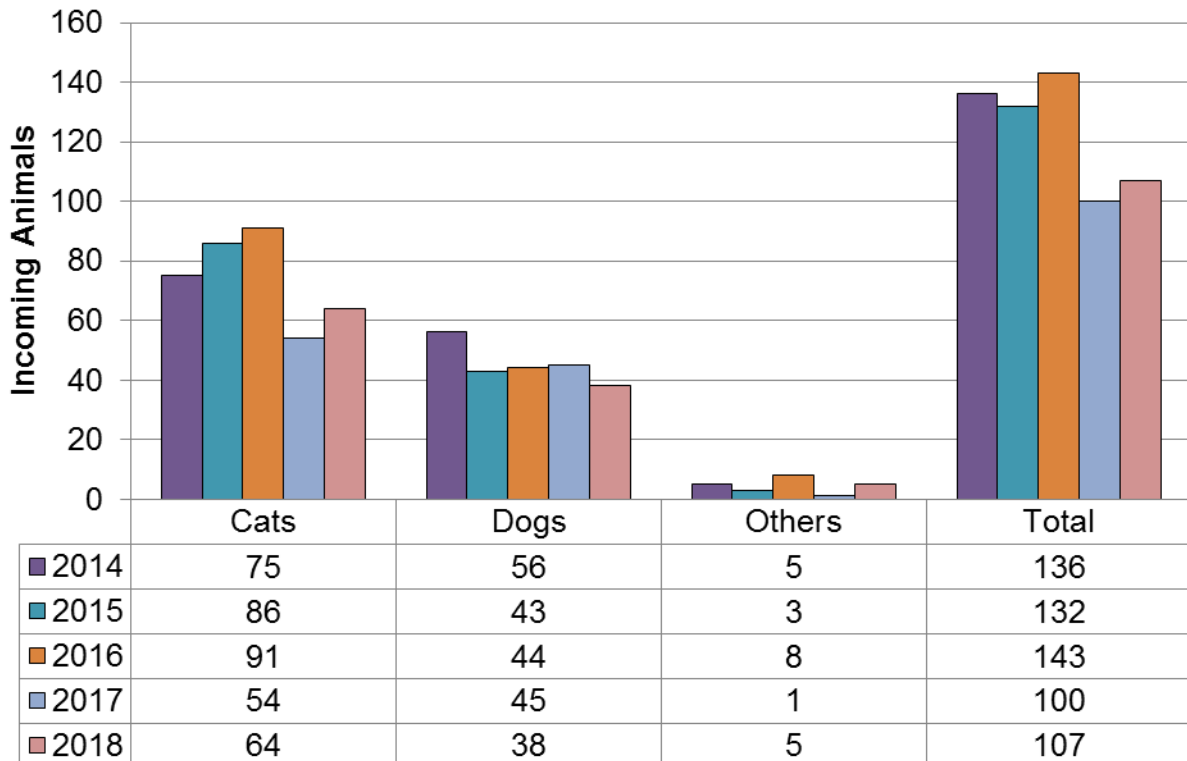
Seized / Custody Year to Date



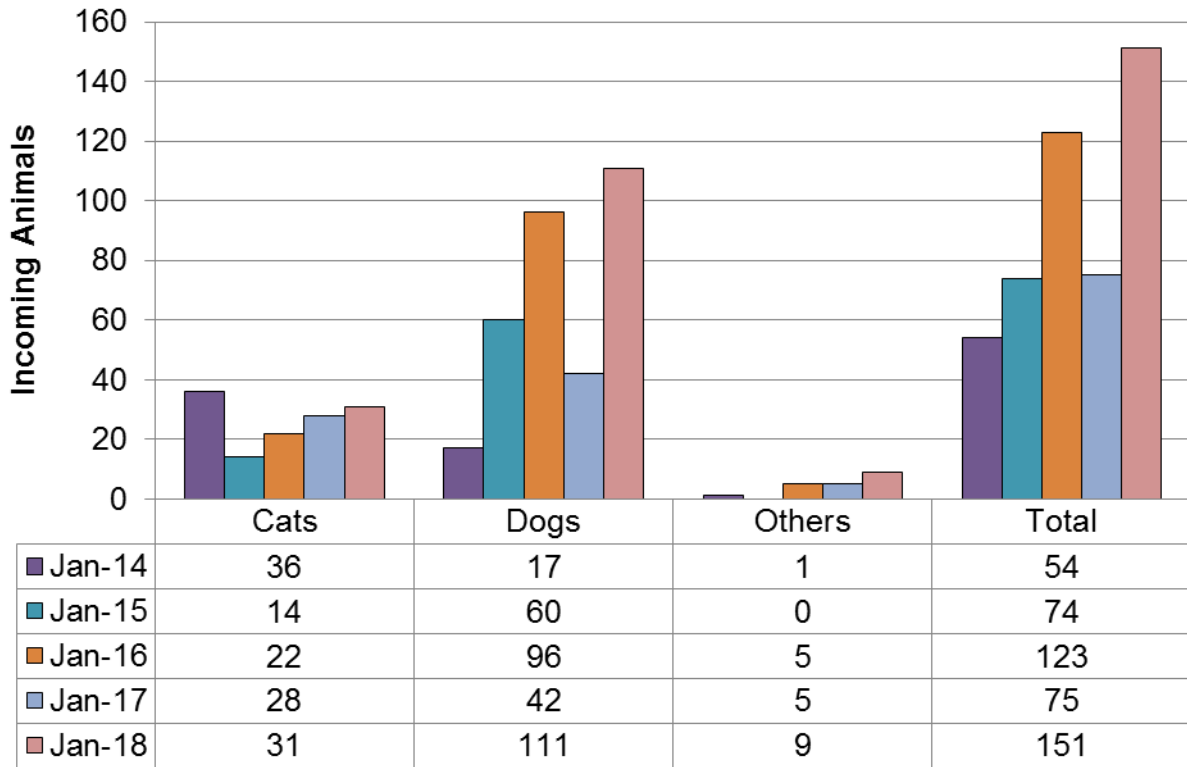
Stray January



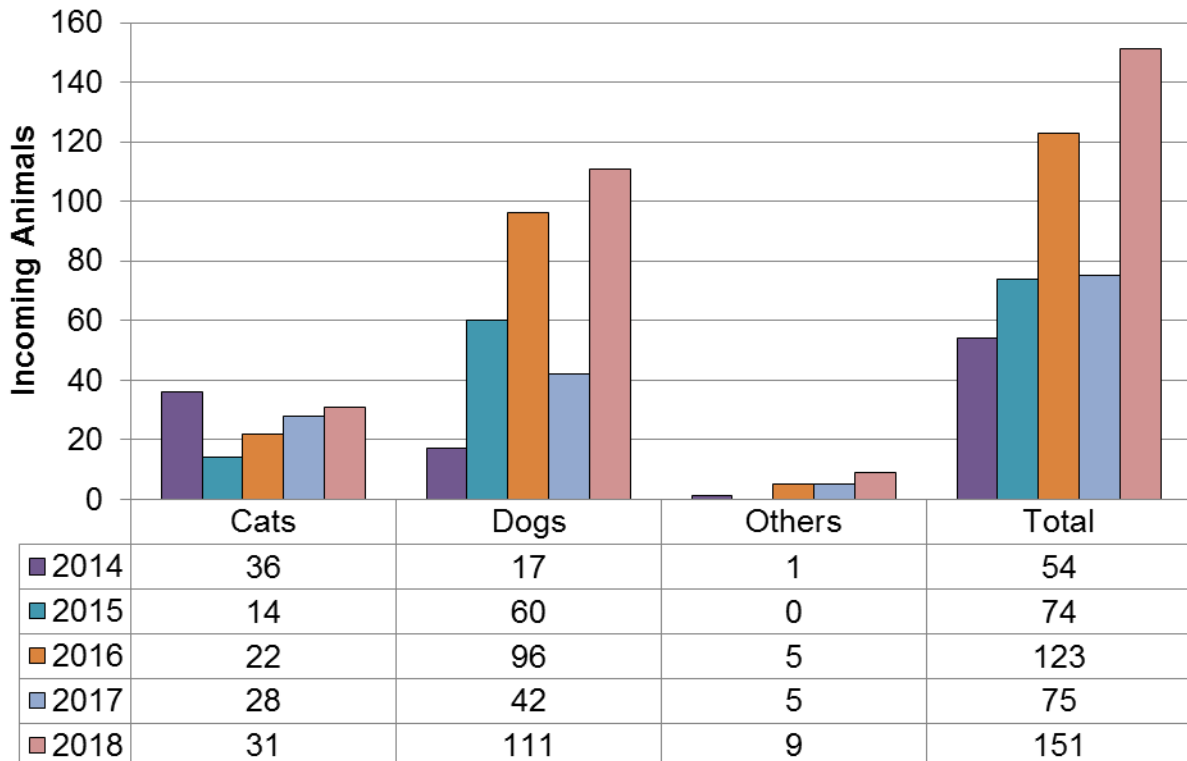
Stray Year to Date



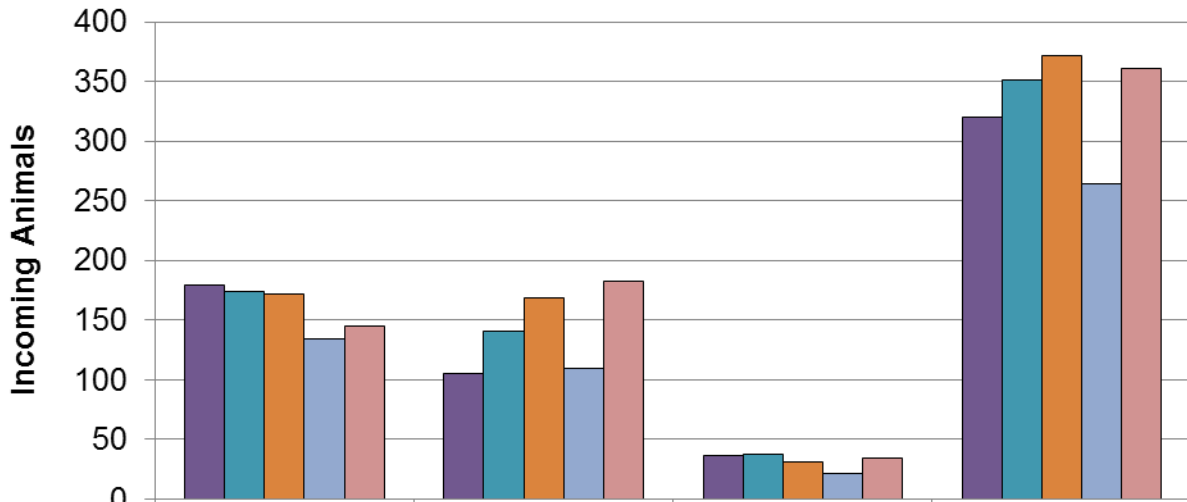
Incoming Transfers January



Incoming Transfers Year to Date

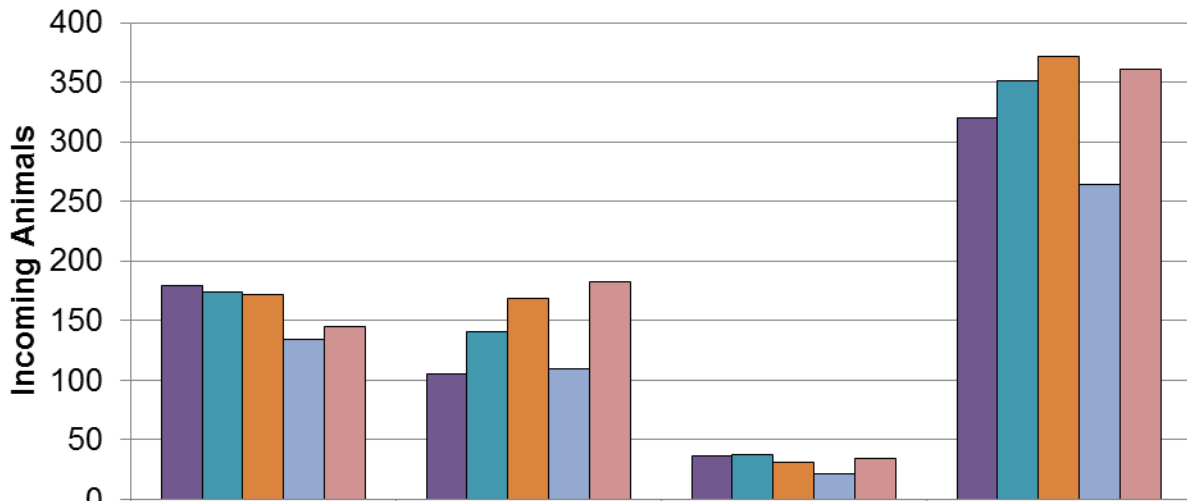


Intake January



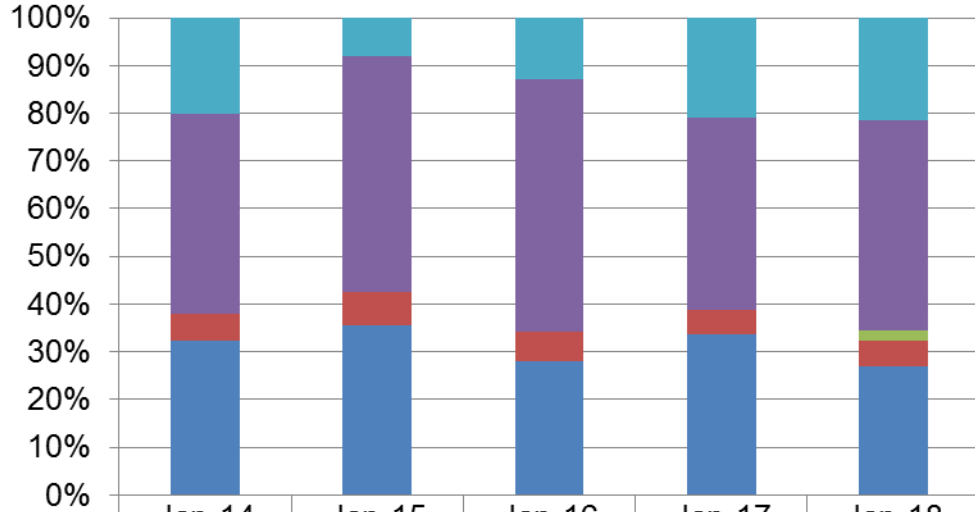
	Cats	Dogs	Others	Total
Jan-14	179	105	36	320
Jan-15	174	140	37	351
Jan-16	172	168	31	371
Jan-17	134	109	21	264
Jan-18	145	182	34	361

Intake Year to Date



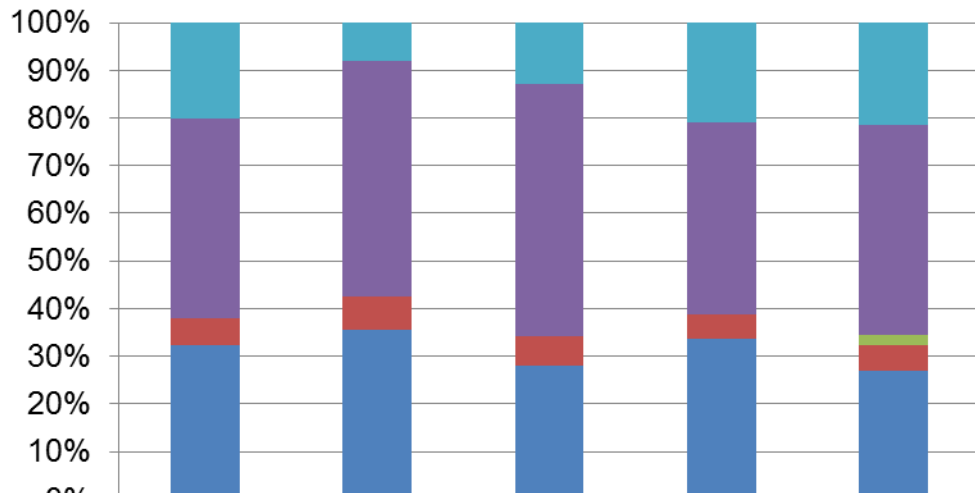
	Cats	Dogs	Others	Total
2014	179	105	36	320
2015	174	140	37	351
2016	172	168	31	371
2017	134	109	21	264
2018	145	182	34	361

Intakes by Percentage Cats - January



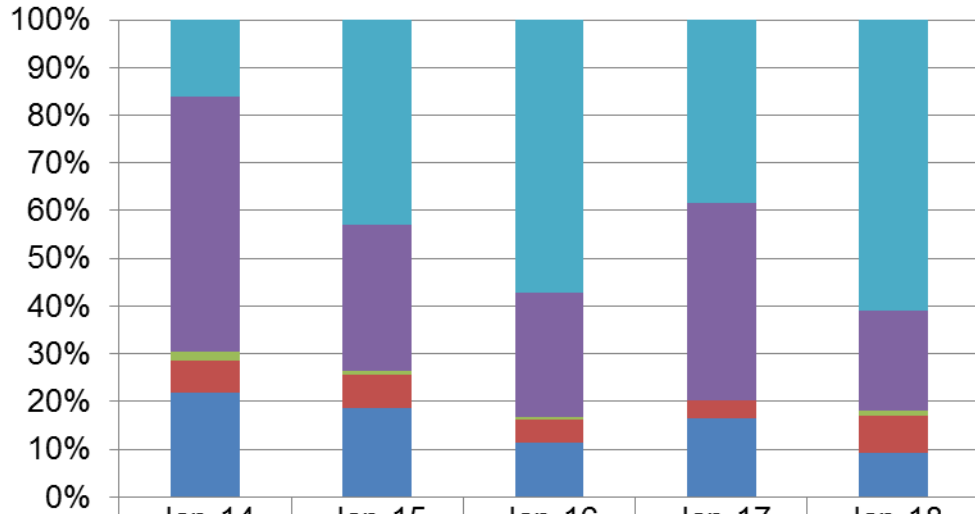
	Jan-14	Jan-15	Jan-16	Jan-17	Jan-18
Incoming Transfers	20.11%	8.05%	12.79%	20.90%	21.38%
Strays	41.90%	49.43%	52.91%	40.30%	44.14%
Seized / Custody	0.00%	0.00%	0.00%	0.00%	2.07%
Returns	5.59%	6.90%	6.40%	5.22%	5.52%
Owner Surrenders	32.40%	35.63%	27.91%	33.58%	26.90%

Intakes by Percentage Cats - Year to Date



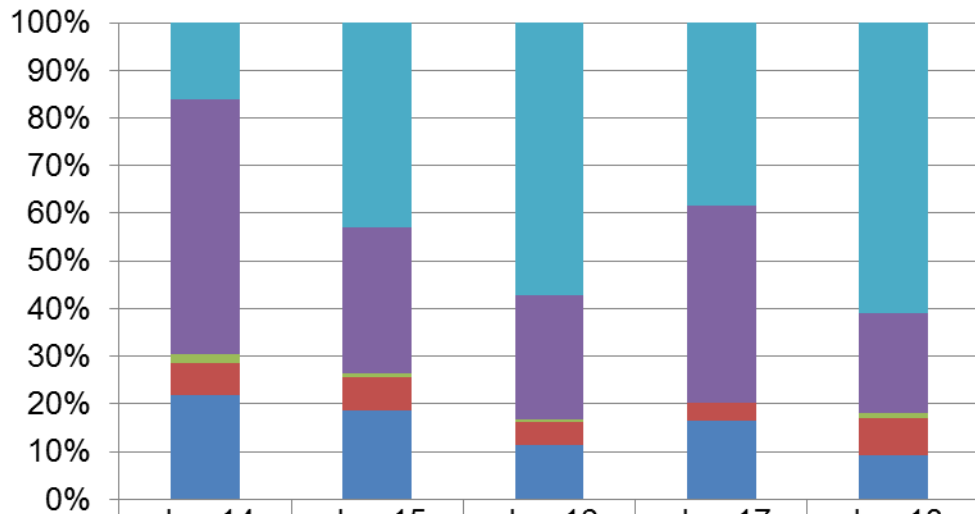
	Jan-14	Jan-15	Jan-16	Jan-17	Jan-18
Incoming Transfers	20.11%	8.05%	12.79%	20.90%	21.38%
Strays	41.90%	49.43%	52.91%	40.30%	44.14%
Seized / Custody	0.00%	0.00%	0.00%	0.00%	2.07%
Returns	5.59%	6.90%	6.40%	5.22%	5.52%
Owner Surrenders	32.40%	35.63%	27.91%	33.58%	26.90%

Intakes by Percentage Dogs - January



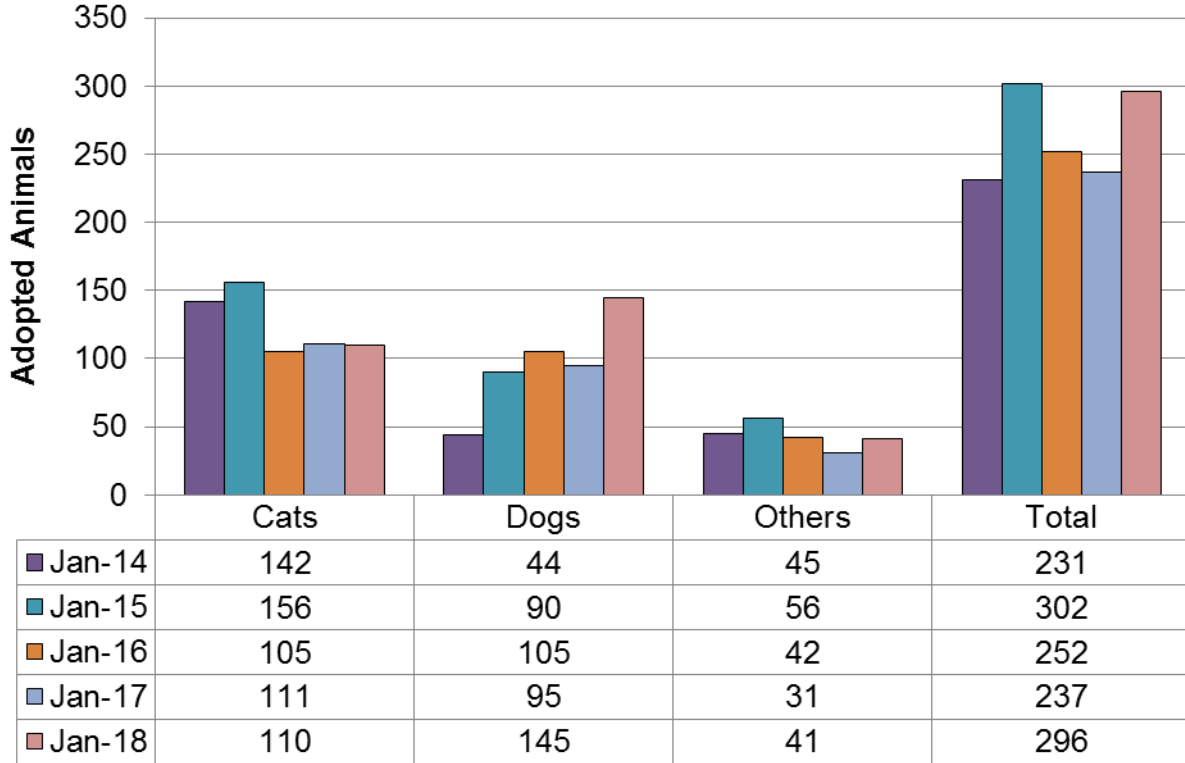
	Jan-14	Jan-15	Jan-16	Jan-17	Jan-18
Incoming Transfers	16.19%	42.86%	57.14%	38.53%	60.99%
Strays	53.33%	30.71%	26.19%	41.28%	20.88%
Seized / Custody	1.90%	0.71%	0.60%	0.00%	1.10%
Returns	6.67%	7.14%	4.76%	3.67%	7.69%
Owner Surrenders	21.90%	18.57%	11.31%	16.51%	9.34%

Intakes by Percentage Dogs - Year to Date

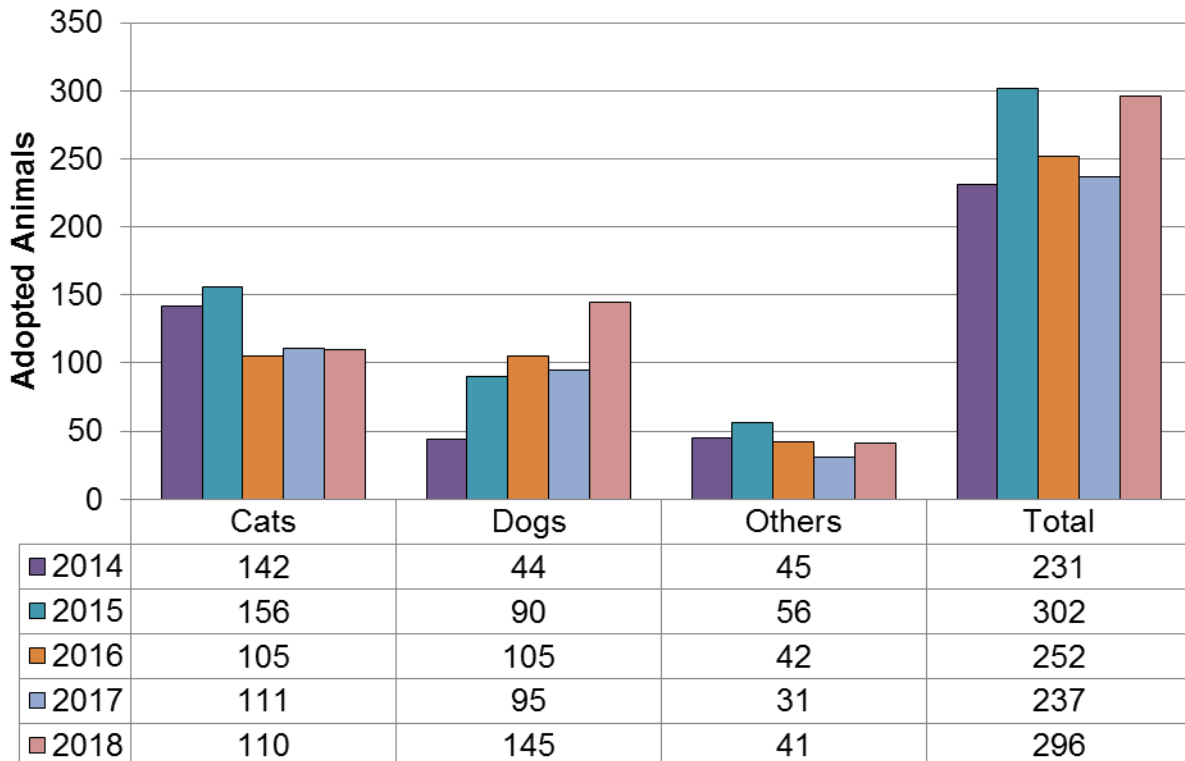


	Jan-14	Jan-15	Jan-16	Jan-17	Jan-18
Incoming Transfers	16.19%	42.86%	57.14%	38.53%	60.99%
Strays	53.33%	30.71%	26.19%	41.28%	20.88%
Seized / Custody	1.90%	0.71%	0.60%	0.00%	1.10%
Returns	6.67%	7.14%	4.76%	3.67%	7.69%
Owner Surrenders	21.90%	18.57%	11.31%	16.51%	9.34%

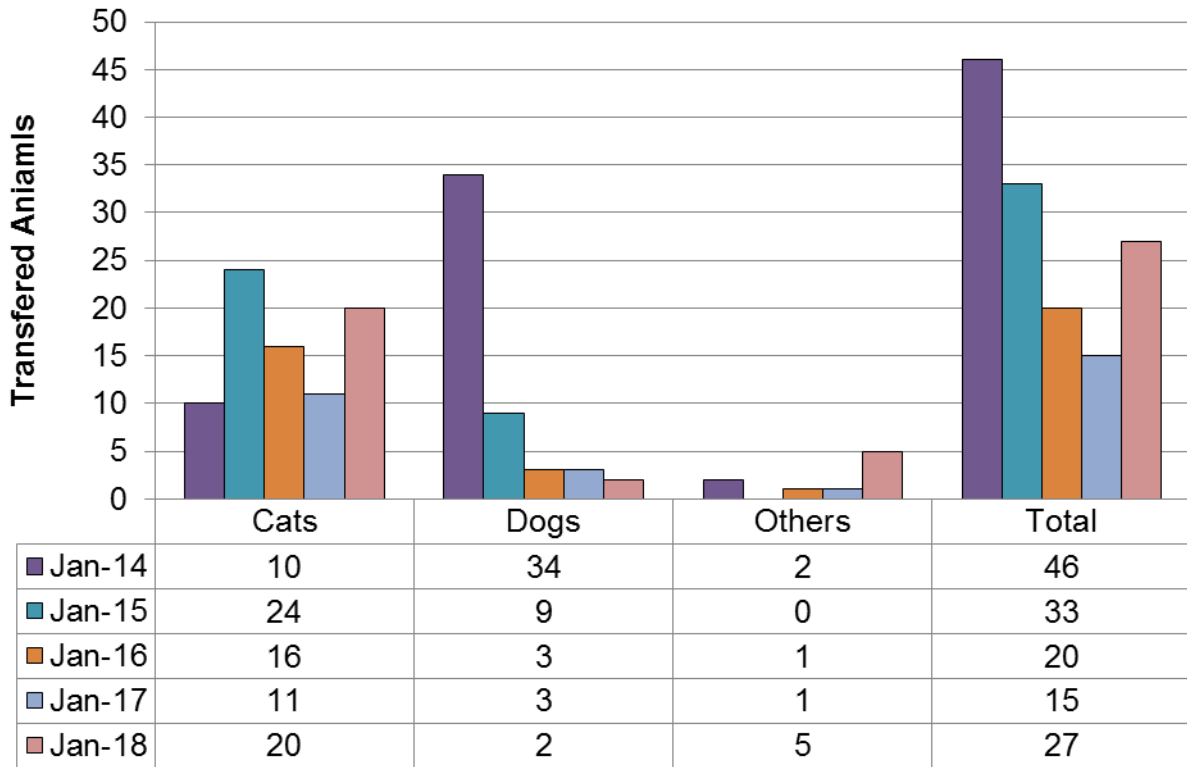
Adoptions January



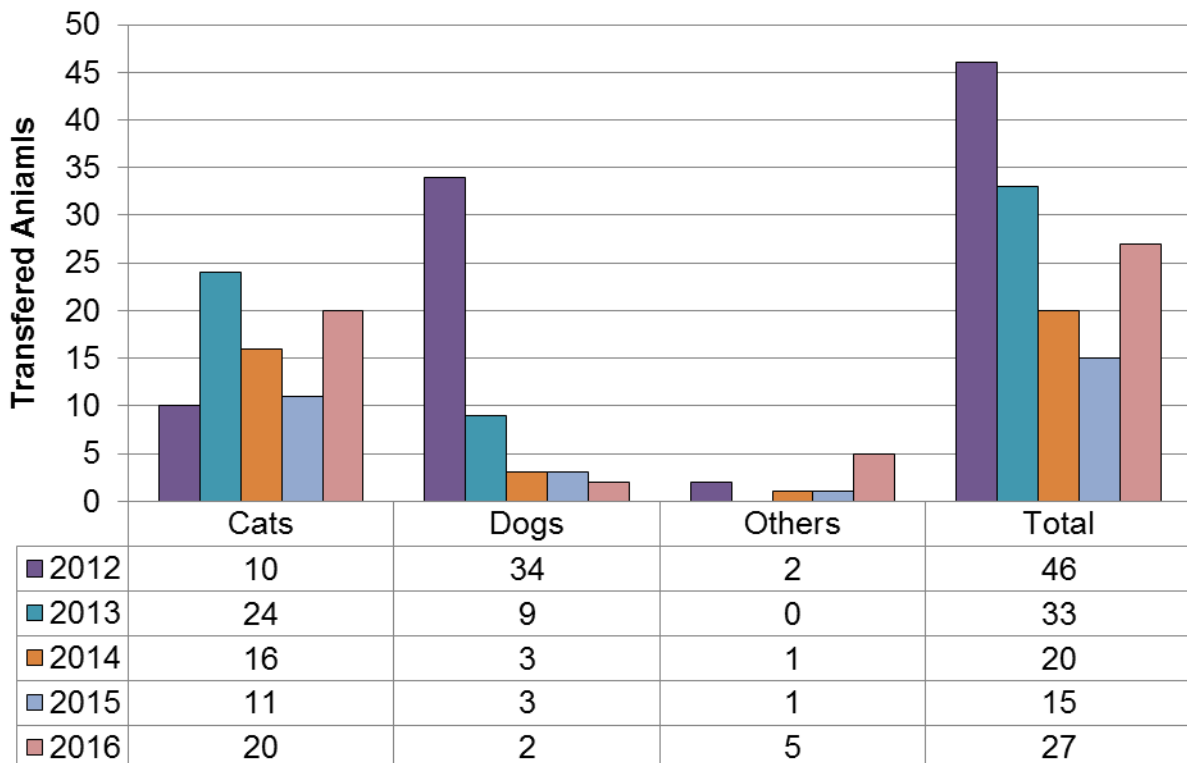
Adoptions Year to Date



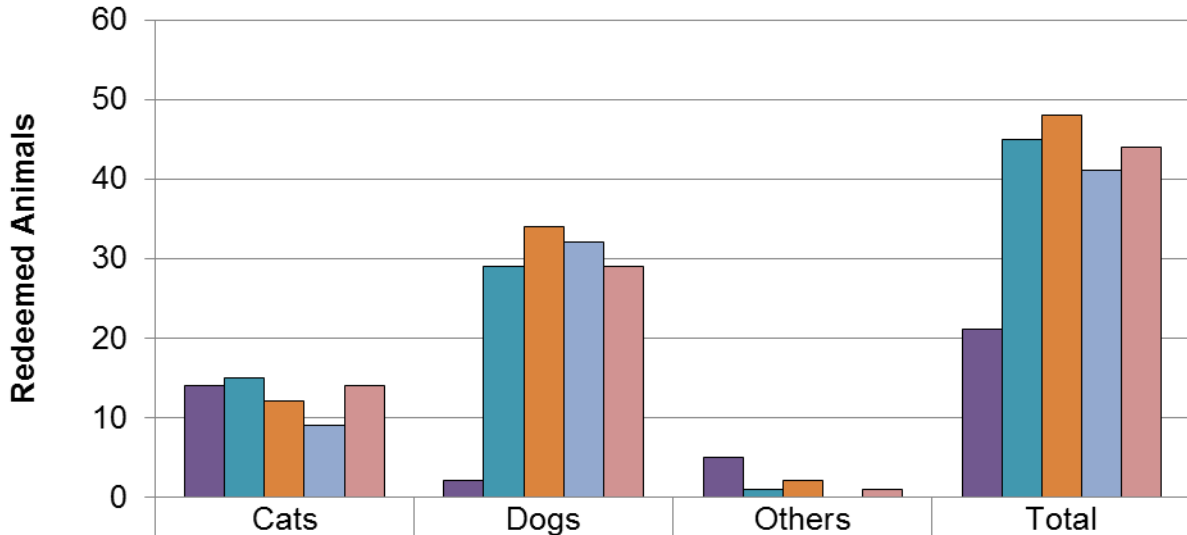
Outgoing Transfers January



Outgoing Transfers Year to Date

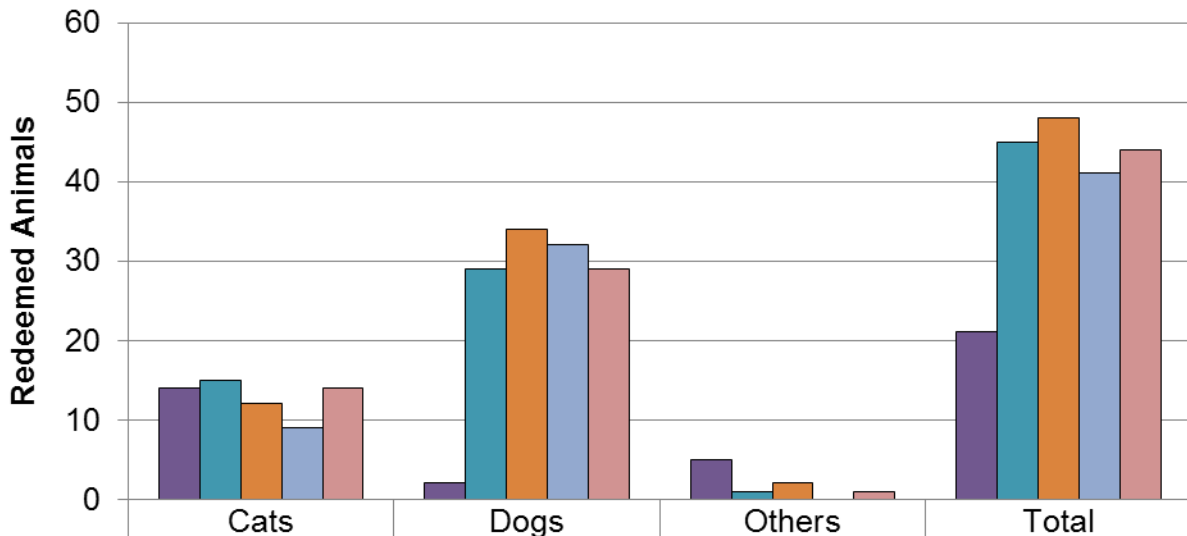


Redemptions January



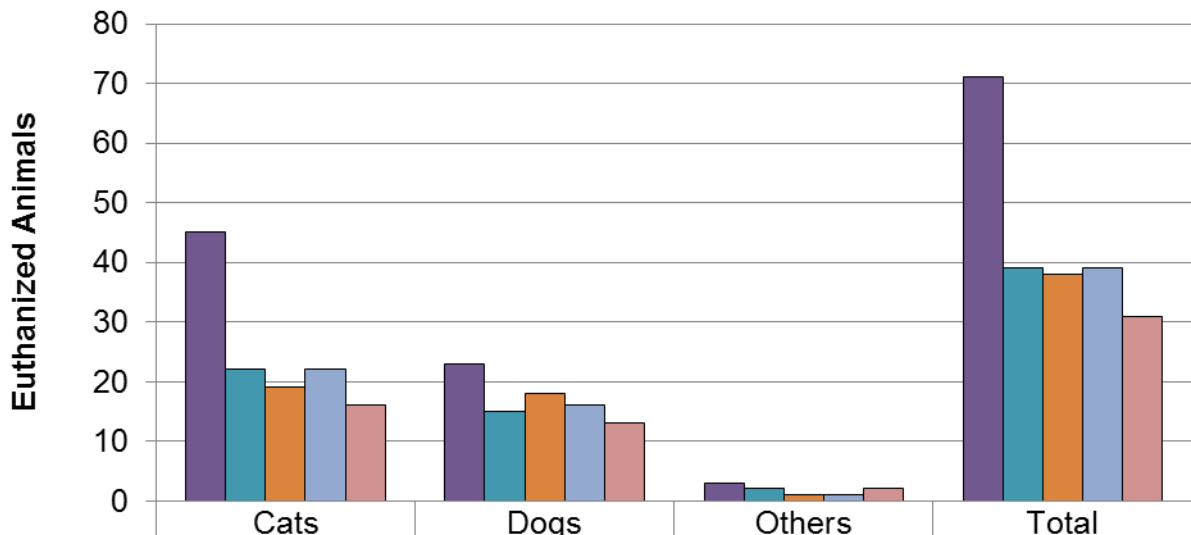
	Cats	Dogs	Others	Total
Jan-14	14	2	5	21
Jan-15	15	29	1	45
Jan-16	12	34	2	48
Jan-17	9	32	0	41
Jan-18	14	29	1	44

Redemptions Year to Date



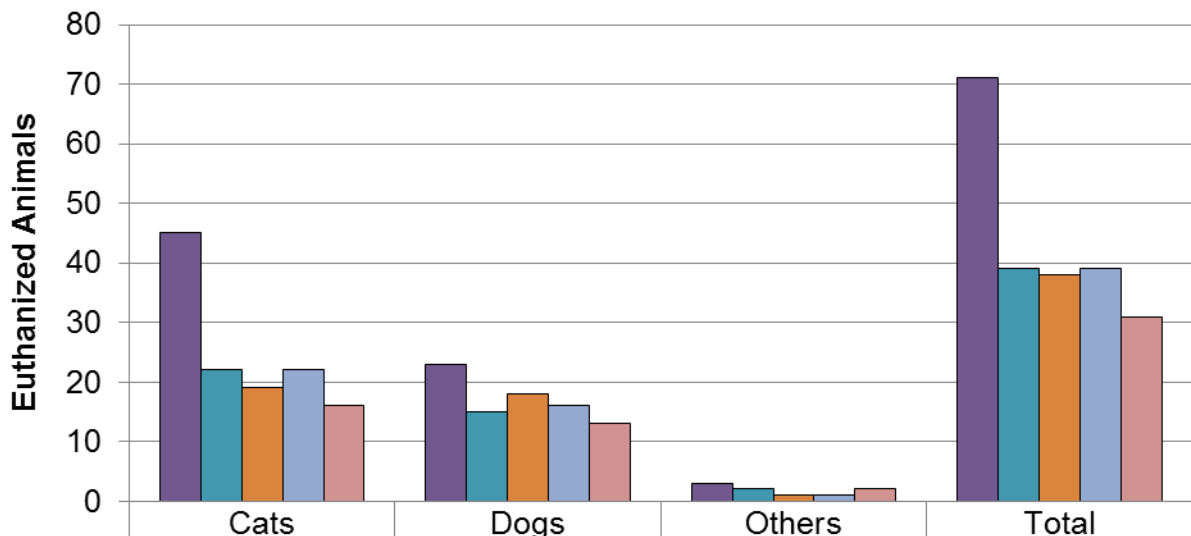
	Cats	Dogs	Others	Total
2014	14	2	5	21
2015	15	29	1	45
2016	12	34	2	48
2017	9	32	0	41
2018	14	29	1	44

Euthanasia January



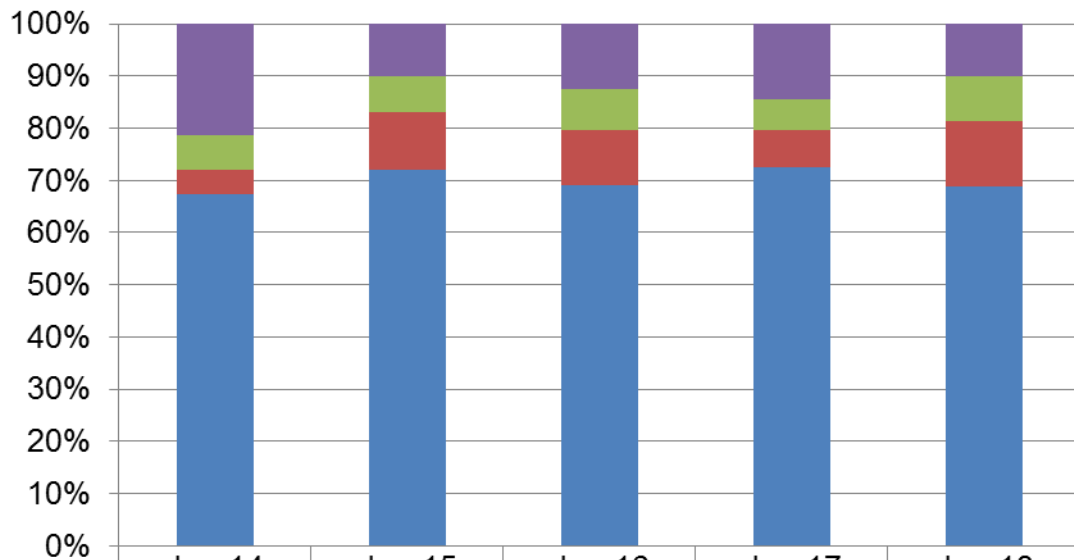
	Cats	Dogs	Others	Total
Jan-14	45	23	3	71
Jan-15	22	15	2	39
Jan-16	19	18	1	38
Jan-17	22	16	1	39
Jan-18	16	13	2	31

Euthanasia Year to Date



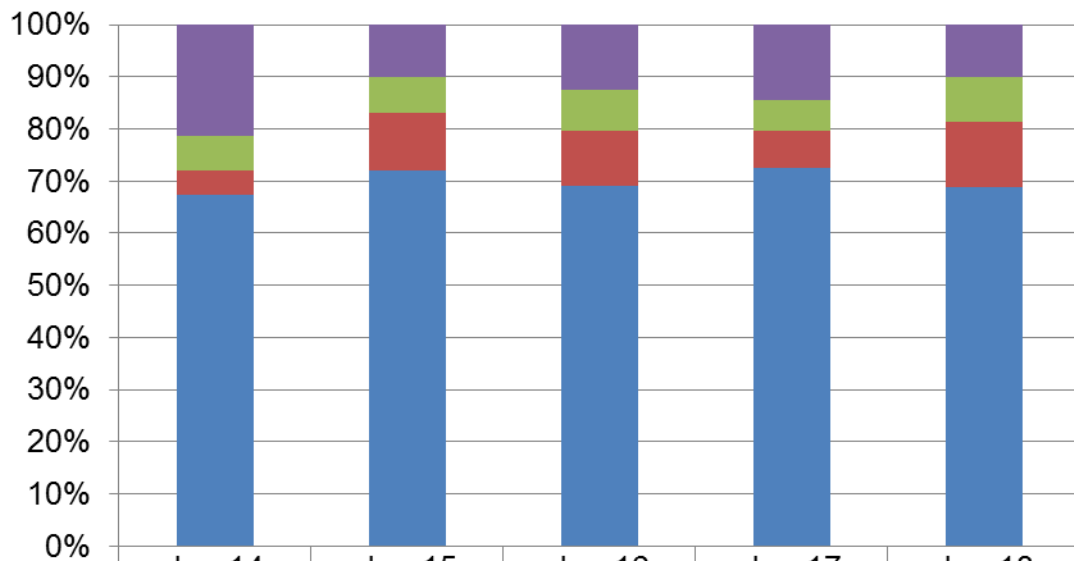
	Cats	Dogs	Others	Total
2014	45	23	3	71
2015	22	15	2	39
2016	19	18	1	38
2017	22	16	1	39
2018	16	13	2	31

Outcomes by Percentage Cats - January



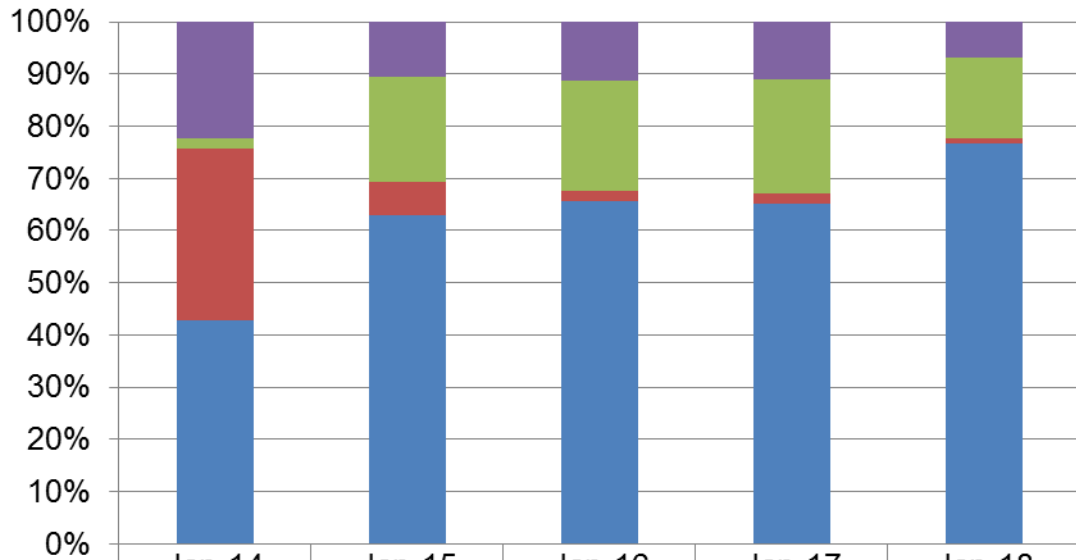
	Jan-14	Jan-15	Jan-16	Jan-17	Jan-18
Euthanasia	21.33%	10.14%	12.50%	14.38%	10.00%
Redemption	6.64%	6.91%	7.89%	5.88%	8.75%
Transfer	4.74%	11.06%	10.53%	7.19%	12.50%
Adoption	67.30%	71.89%	69.08%	72.55%	68.75%

Outcomes by Percentage Cats - Year to Date



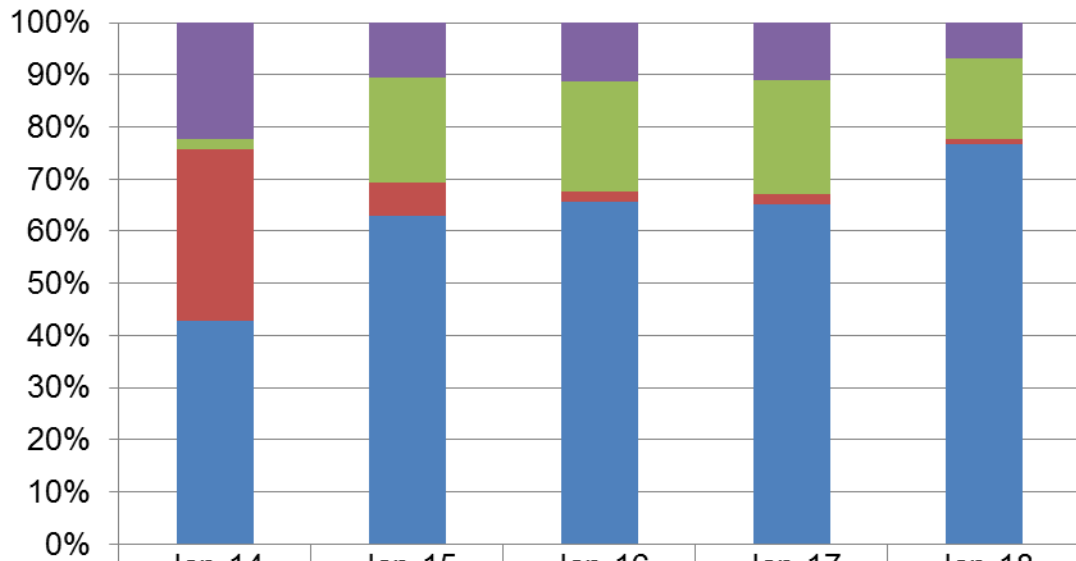
	Jan-14	Jan-15	Jan-16	Jan-17	Jan-18
Euthanasia	21.33%	10.14%	12.50%	14.38%	10.00%
Redemption	6.64%	6.91%	7.89%	5.88%	8.75%
Transfer	4.74%	11.06%	10.53%	7.19%	12.50%
Adoption	67.30%	71.89%	69.08%	72.55%	68.75%

Outcomes by Percentage Dogs - January



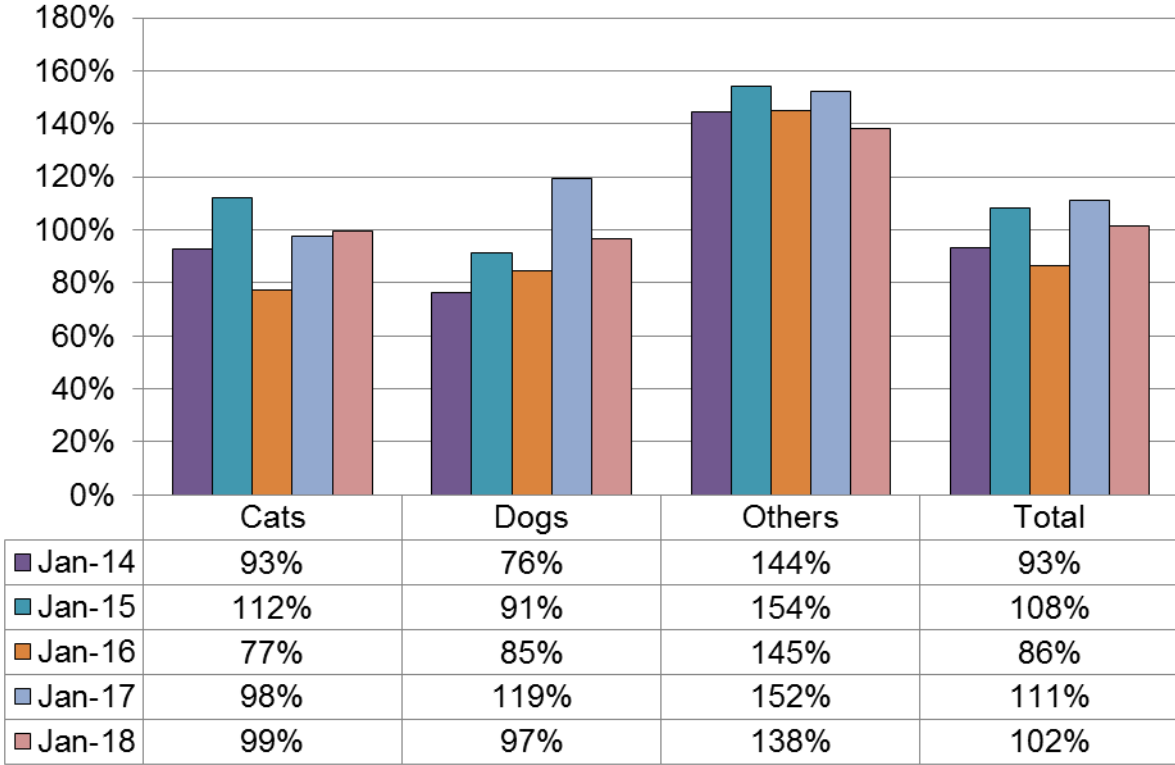
	Jan-14	Jan-15	Jan-16	Jan-17	Jan-18
■ Euthanasia	22.33%	10.49%	11.25%	10.96%	6.88%
■ Redemption	1.94%	20.28%	21.25%	21.92%	15.34%
■ Transfer	33.01%	6.29%	1.88%	2.05%	1.06%
■ Adoption	42.72%	62.94%	65.63%	65.07%	76.72%

Outcomes by Percentage Dogs - Year to Date

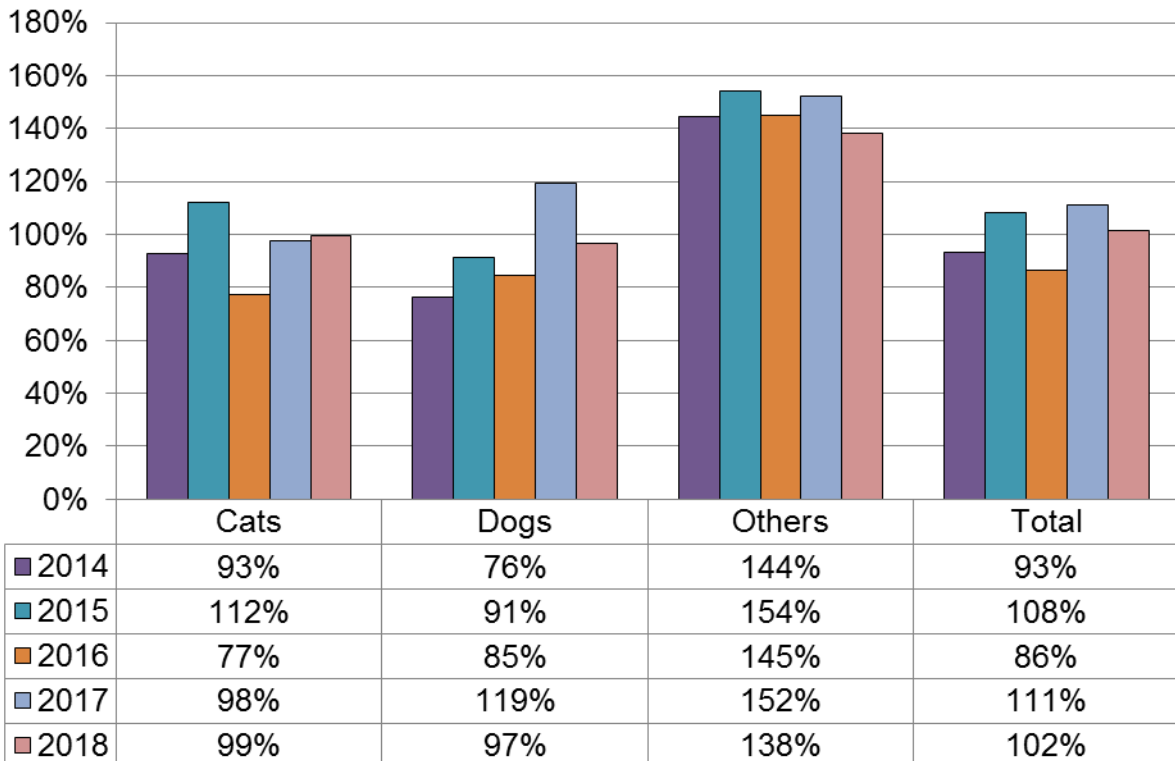


	Jan-14	Jan-15	Jan-16	Jan-17	Jan-18
■ Euthanasia	22.33%	10.49%	11.25%	10.96%	6.88%
■ Redemption	1.94%	20.28%	21.25%	21.92%	15.34%
■ Transfer	33.01%	6.29%	1.88%	2.05%	1.06%
■ Adoption	42.72%	62.94%	65.63%	65.07%	76.72%

Save Rate January



Save Rate Year to Date



Terms and Definitions:

Adoption – The placement of an animal with a new owner/family.

Euthanasia – The act of putting an animal to death painlessly.

Euthanasia Rate – The percentage of animals euthanized during a given time period. For statistical purposes, this number does not include animals admitted specifically for euthanasia.

$$\text{Euthanasia Rate} = \text{Euthanasia} / (\text{Intake} + \text{Inventory})$$

Intake – The number of live animals admitted. For statistical purposes, this number does not include animals admitted specifically for euthanasia.

Live Release Rate – The percentage of live animals released by means of adoption, redemption and transfer during a given time period. The difference between Live Release Rate and Save Rate (see Save Rate) is that Live Release Rate takes into account the starting animal inventory for the given time period. This results in a more accurate reflection of live release versus population. DCHS started using Live Release Rate in 2008.

$$\text{Live Release Rate} = (\text{Adoptions} + \text{Redemptions} + \text{Transfers}) / (\text{Intake} + \text{Inventory})$$

Redemption – The reclaiming of an animal by an existing or previous owner.

Rolling Release Rate – A compilation of Live Release Rate, Euthanasia Rate and Sanctuary Rate.

Sanctuary Rate – The percentage of animals remaining in the shelter's care at the end of a given time period.

$$\text{Sanctuary Rate} = ((\text{Inventory} + \text{Intake}) - (\text{Adoptions} + \text{Redemptions} + \text{Transfers} + \text{Euthanasia})) / (\text{Intake} + \text{Inventory})$$

Save Rate – The percentage of live animals released by means of adoption, redemption and transfer during a given time period. Save Rate is an older and previously widely used formula for calculating a shelter's success but does not include the starting animal inventory for the given time period. This results in a less accurate reflection of live release versus population and could even generate percentages above 100% (for example if during a given time period 10 animals were adopted but only 5 were admitted, the Save Rate would equal 200% because the existing inventory of 5+ animals are not taken into consideration). Save Rate is still commonly used by shelters and is still calculated at DCHS for the purpose of comparisons to other shelter that still use Save Rate and for comparison to past years before Live Release Rate started to be calculated in 2008.

$$\text{Save Rate} = (\text{Adoption} + \text{Redemptions} + \text{Transfers}) / \text{Intake}$$

Transfer – The placement of an animal with another animal welfare organization.