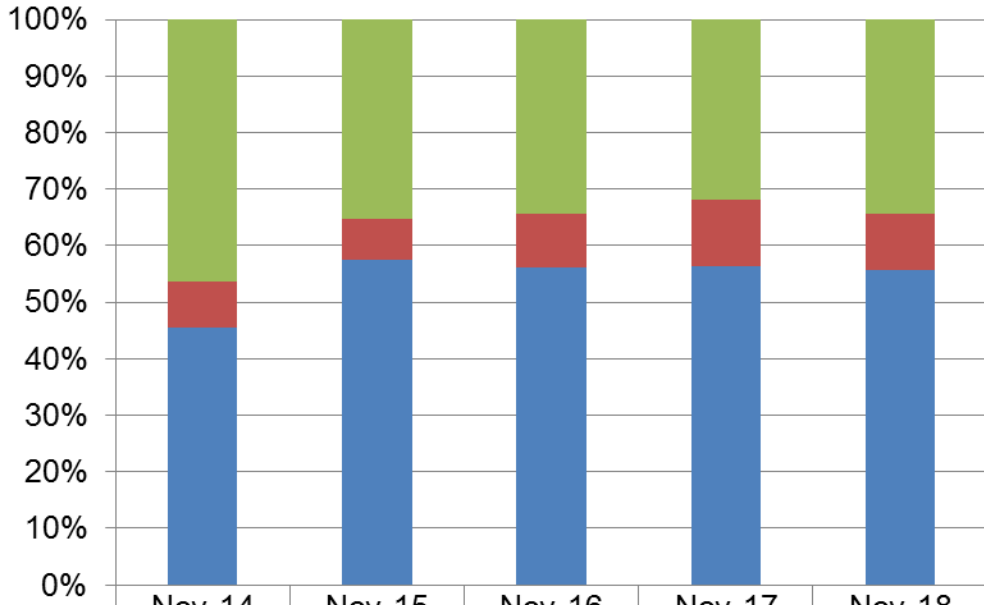


Dane County Humane Society
Rolling Release Rate
&
Save Rate
Overview

November 2018

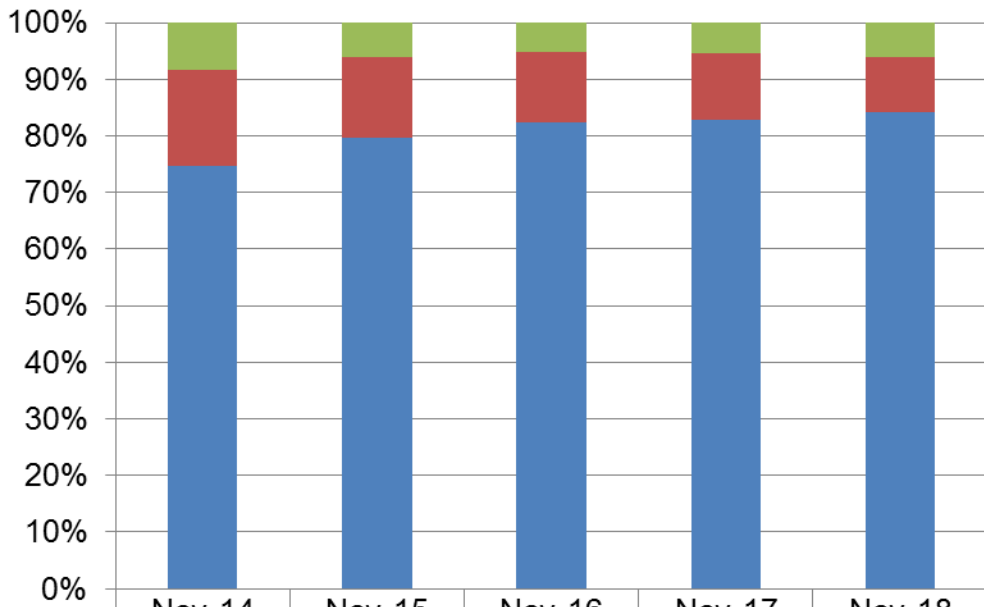
Report prepared by:
Doug Brown
Assistant Executive Director
Dane County Humane Society

Cat Rolling Release Rate November



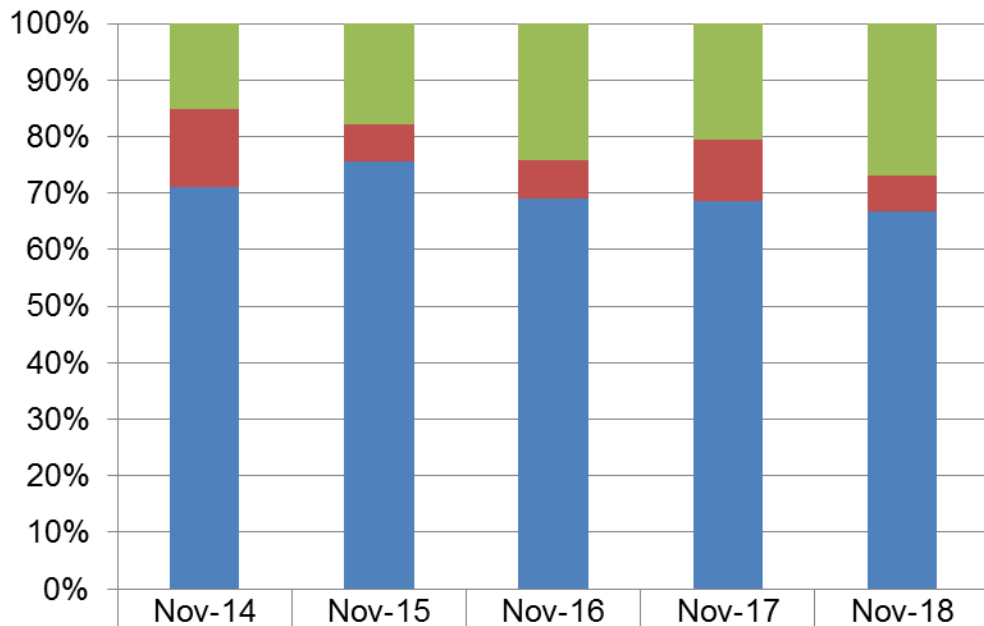
■ Sanctuary Rate	46.31%	35.31%	34.29%	31.77%	34.45%
■ Euthanasia Rate	8.12%	7.24%	9.51%	11.98%	9.77%
■ Live Release Rate	45.57%	57.46%	56.20%	56.25%	55.78%

Cat Rolling Release Rate Year to Date



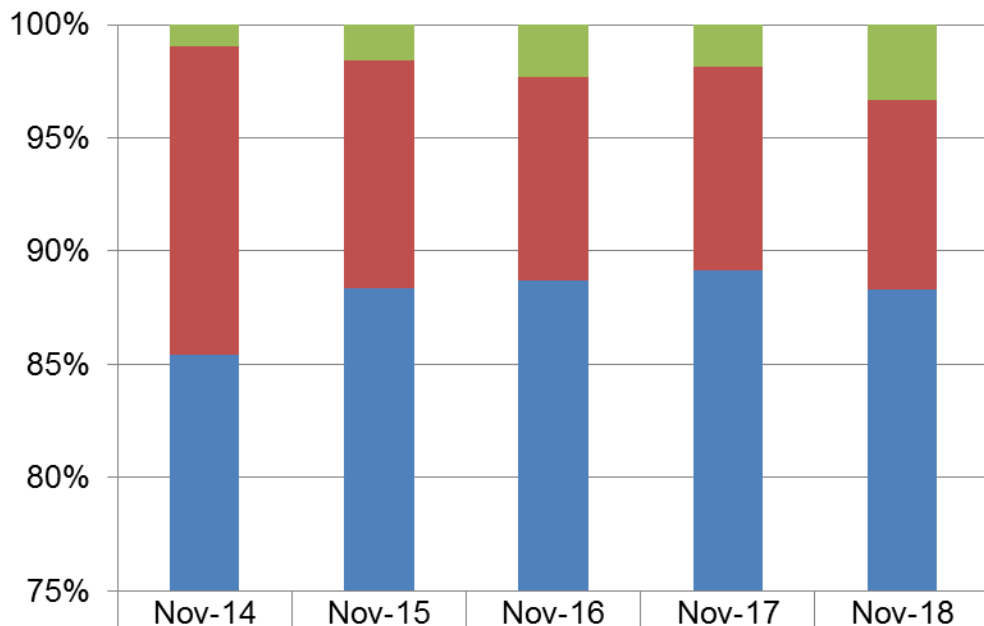
■ Sanctuary Rate	8.34%	6.13%	5.19%	5.50%	6.00%
■ Euthanasia Rate	16.95%	14.26%	12.42%	11.74%	9.73%
■ Live Release Rate	74.71%	79.61%	82.39%	82.76%	84.27%

Dog Rolling Release Rate November



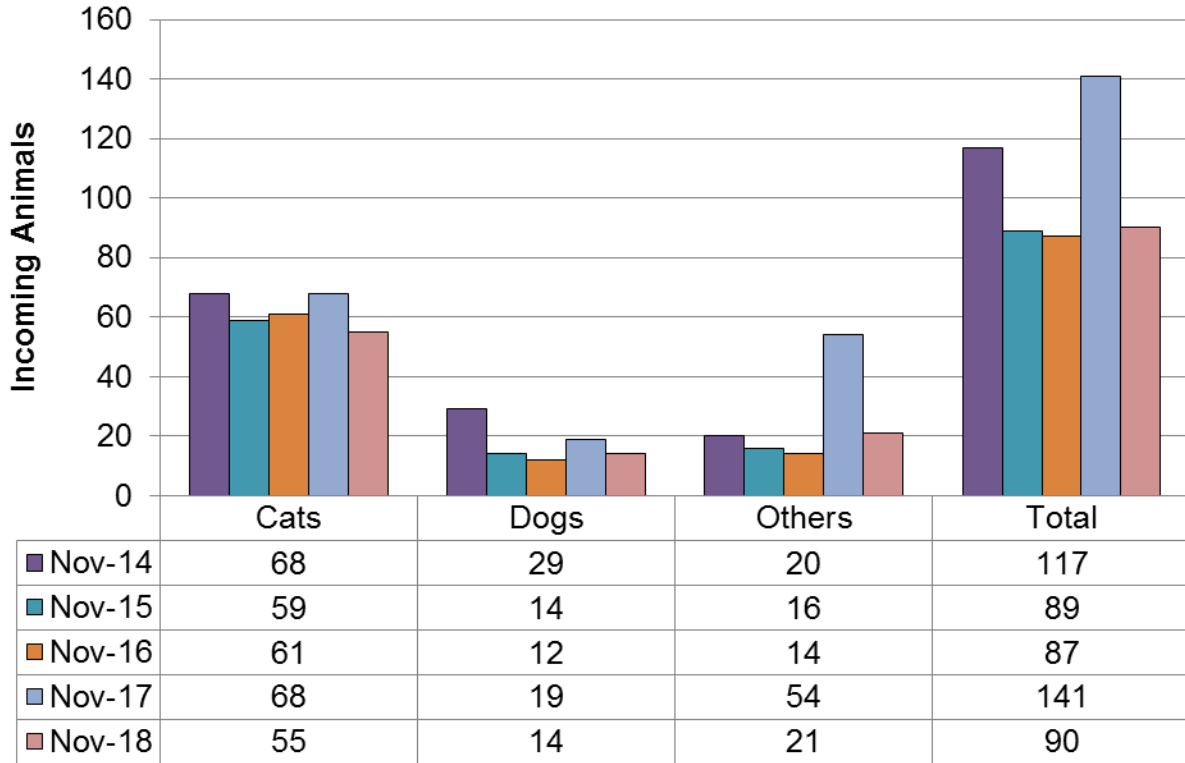
■ Sanctuary Rate	15.13%	17.86%	24.08%	20.48%	26.91%
■ Euthanasia Rate	13.82%	6.55%	6.81%	10.95%	6.28%
■ Live Release Rate	71.05%	75.60%	69.11%	68.57%	66.82%

Dog Rolling Release Rate Year to Date

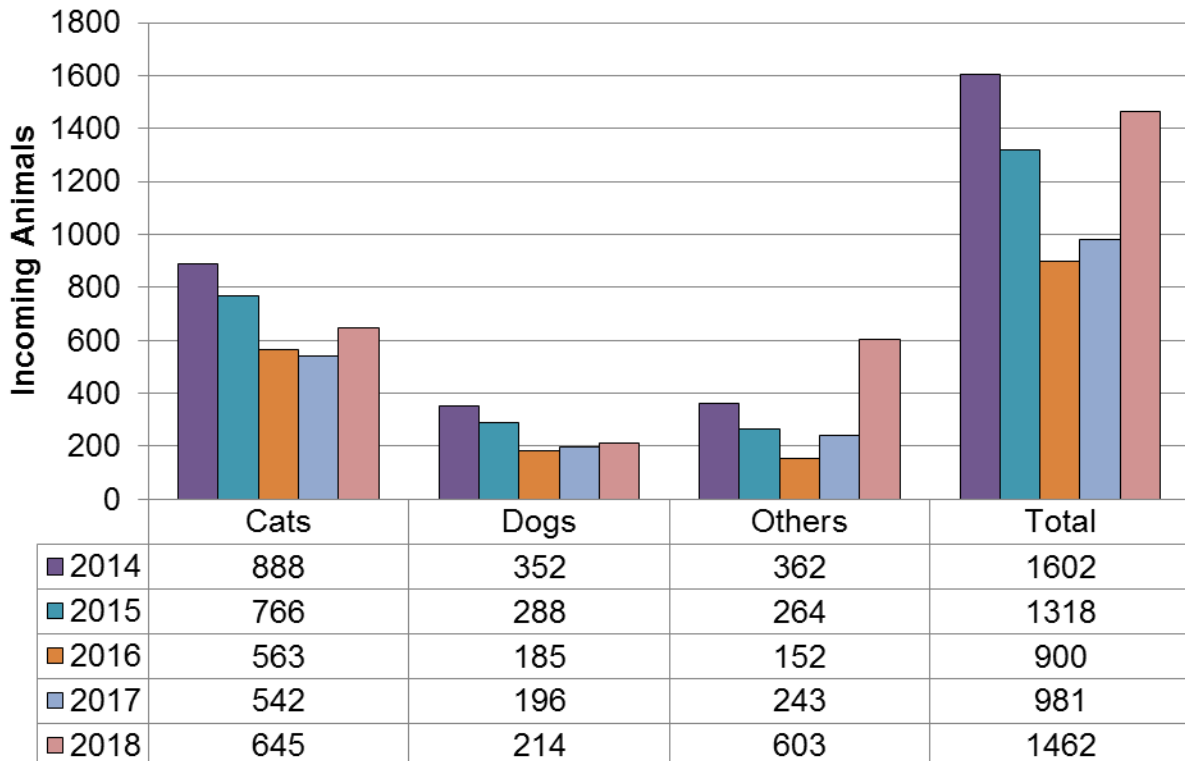


■ Sanctuary Rate	0.97%	1.58%	2.29%	1.87%	3.32%
■ Euthanasia Rate	13.61%	10.07%	8.99%	8.98%	8.36%
■ Live Release Rate	85.42%	88.35%	88.72%	89.16%	88.32%

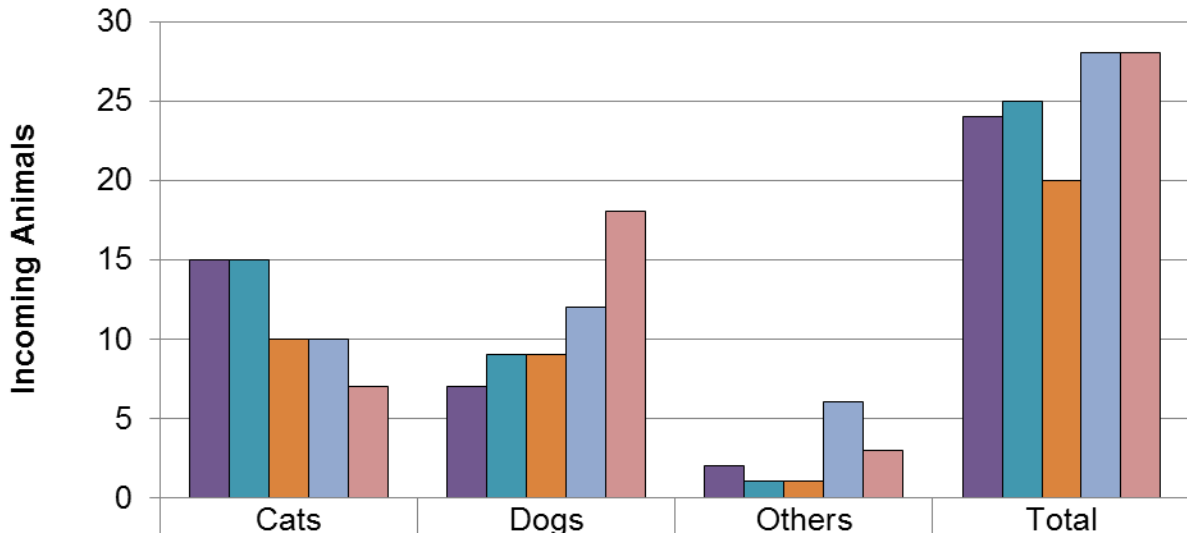
Surrenders November



Surrenders Year to Date

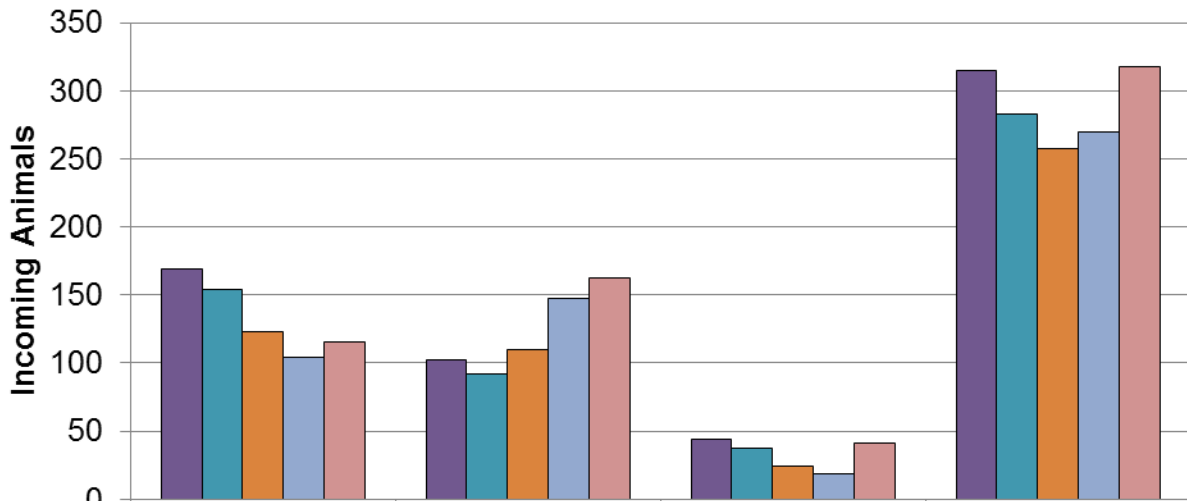


Returns November



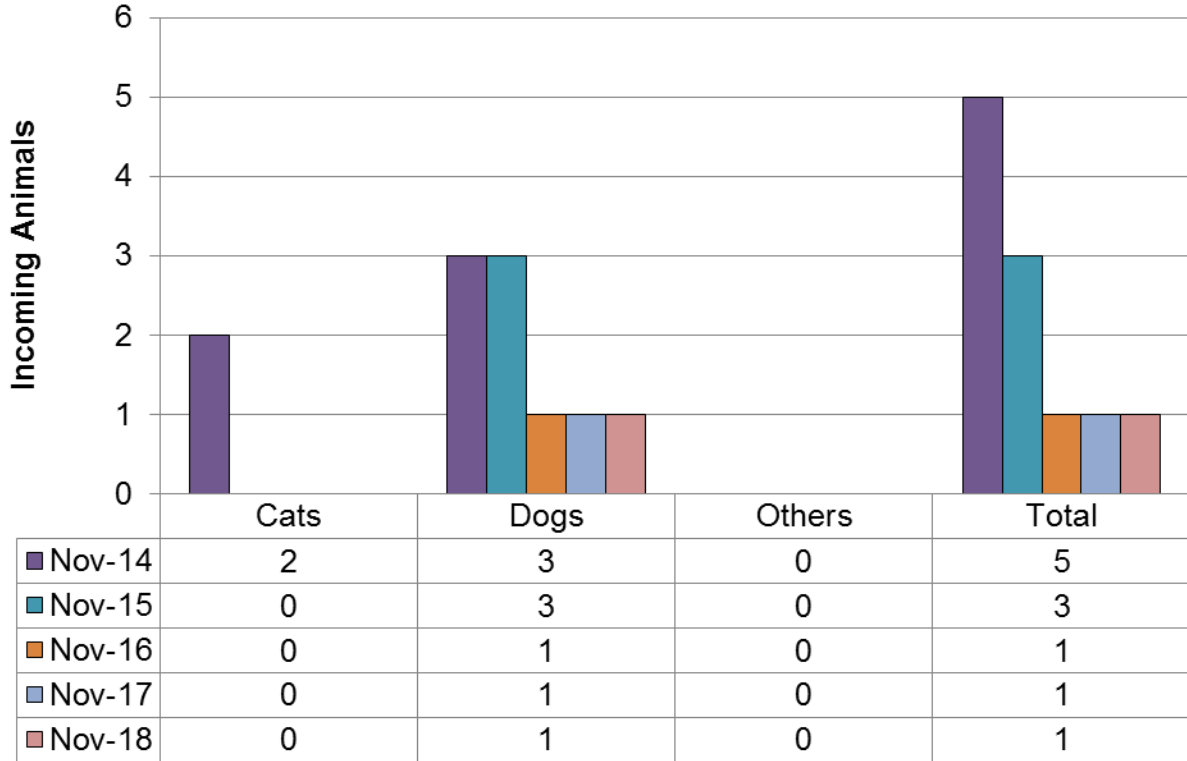
	Cats	Dogs	Others	Total
Nov-14	15	7	2	24
Nov-15	15	9	1	25
Nov-16	10	9	1	20
Nov-17	10	12	6	28
Nov-18	7	18	3	28

Returns Year to Date

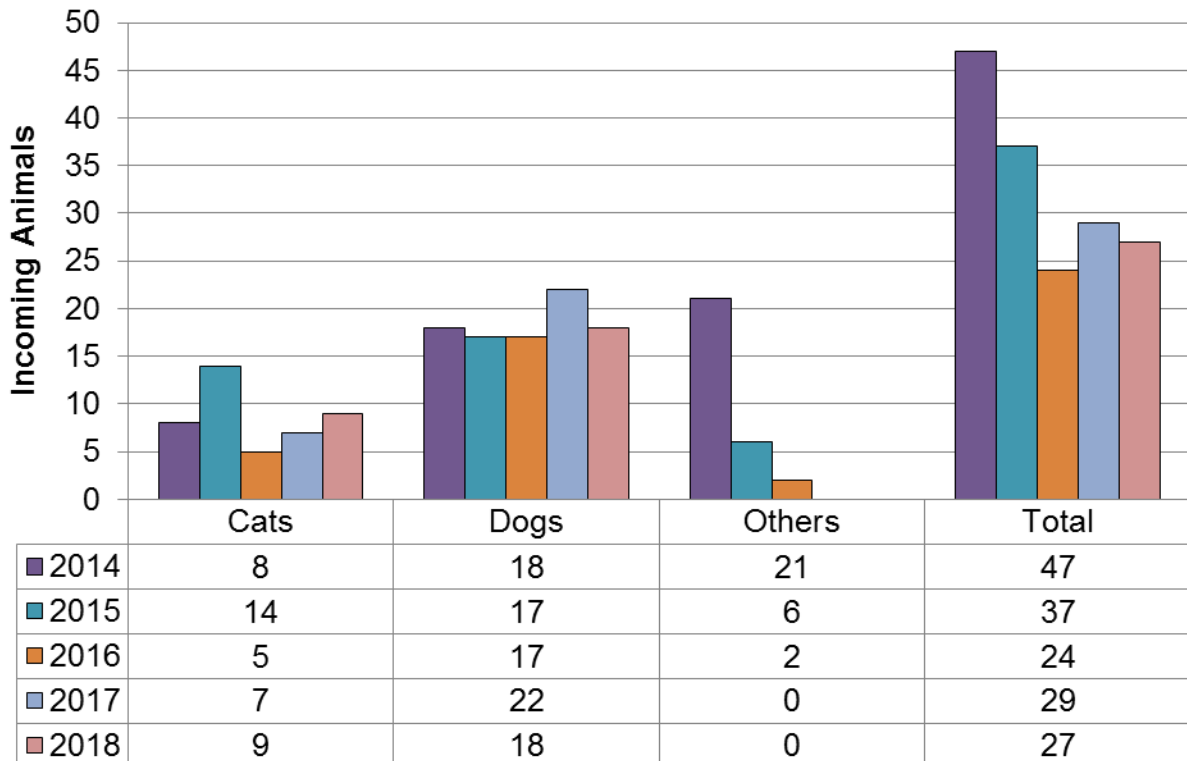


	Cats	Dogs	Others	Total
2014	169	102	44	315
2015	154	92	37	283
2016	123	110	24	257
2017	104	147	19	270
2018	115	162	41	318

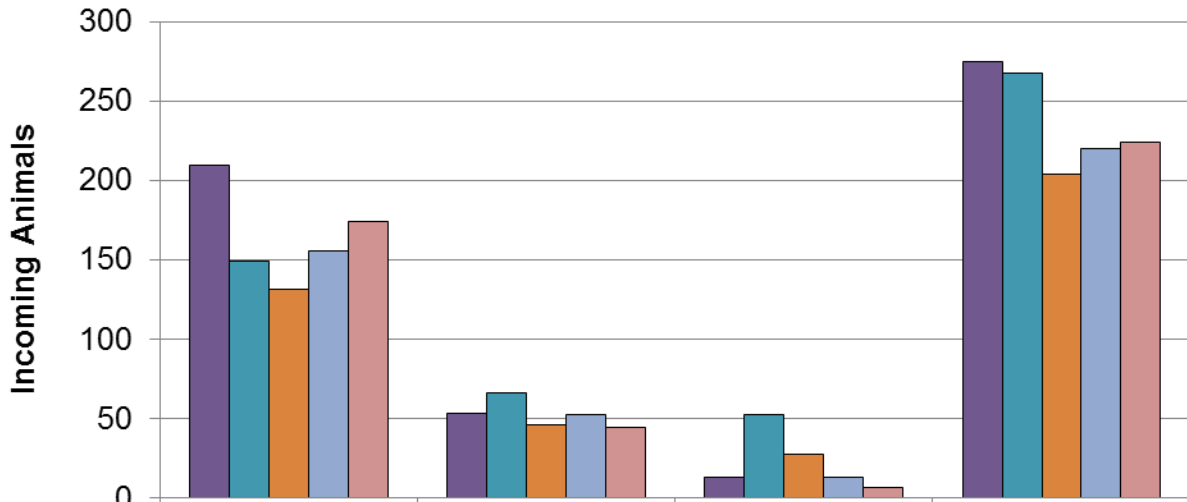
Seized / Custody November



Seized / Custody Year to Date

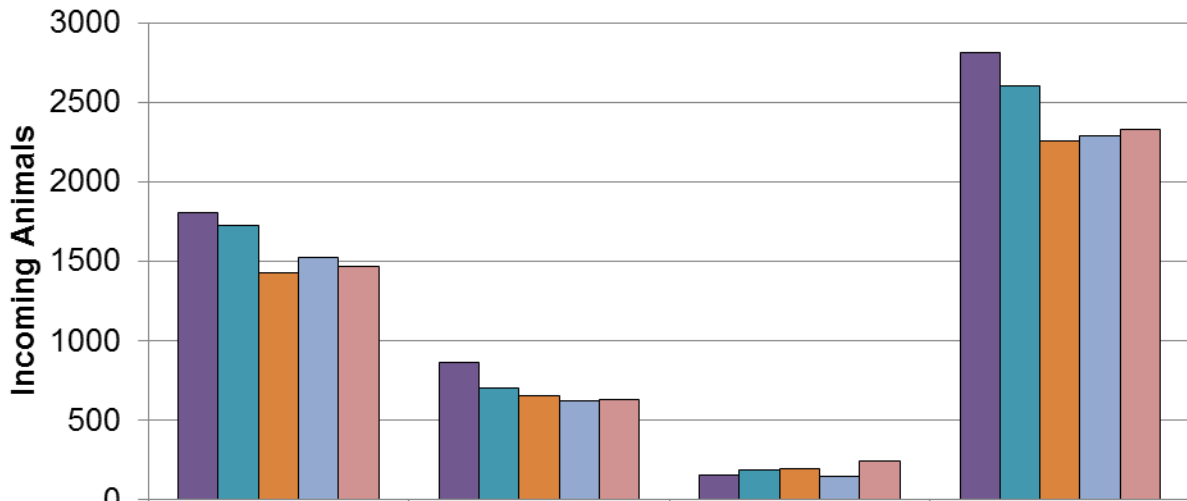


Stray November



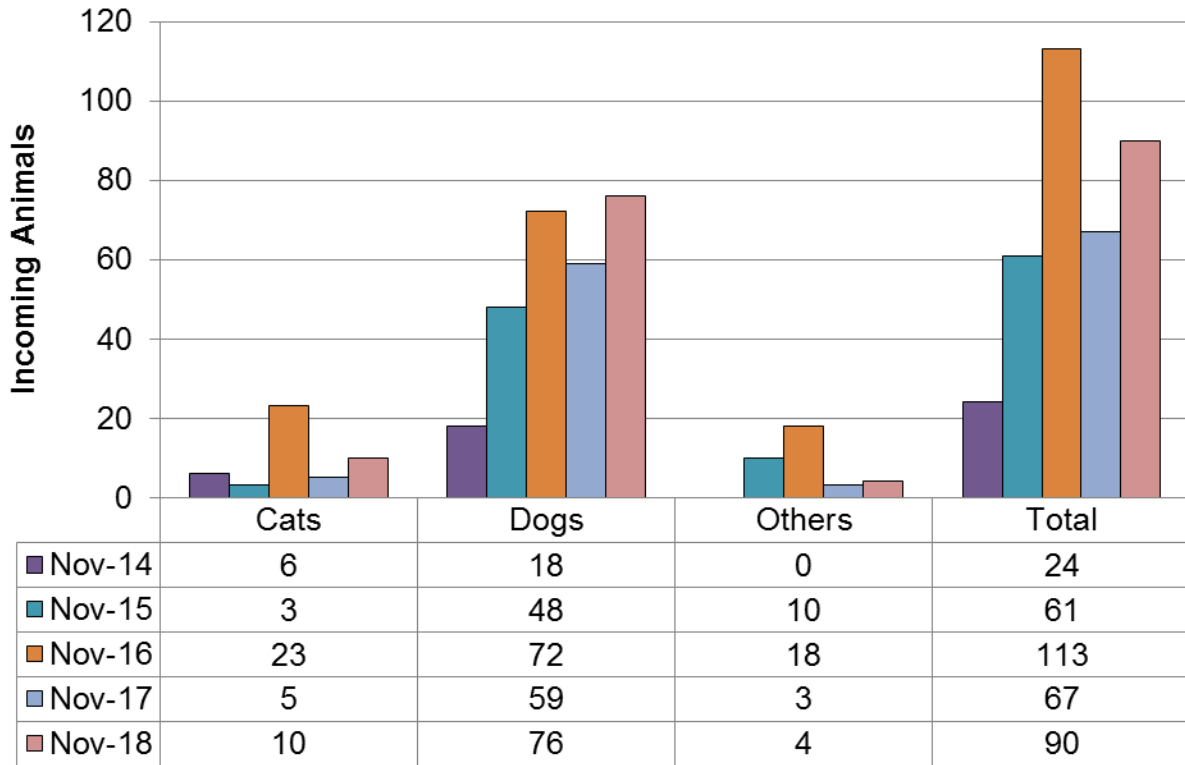
	Cats	Dogs	Others	Total
Nov-14	209	53	13	275
Nov-15	149	66	52	267
Nov-16	131	46	27	204
Nov-17	155	52	13	220
Nov-18	174	44	6	224

Stray Year to Date

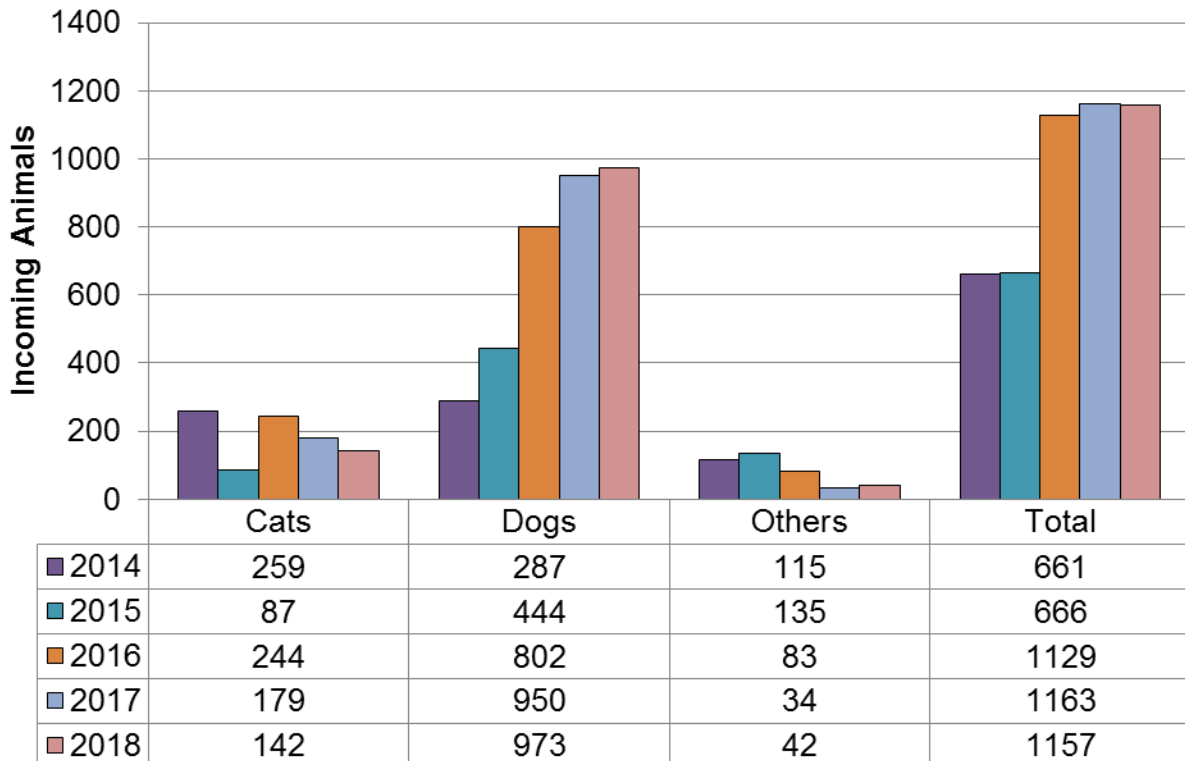


	Cats	Dogs	Others	Total
2014	1801	859	154	2814
2015	1722	699	181	2602
2016	1422	647	188	2257
2017	1519	621	147	2287
2018	1461	625	244	2330

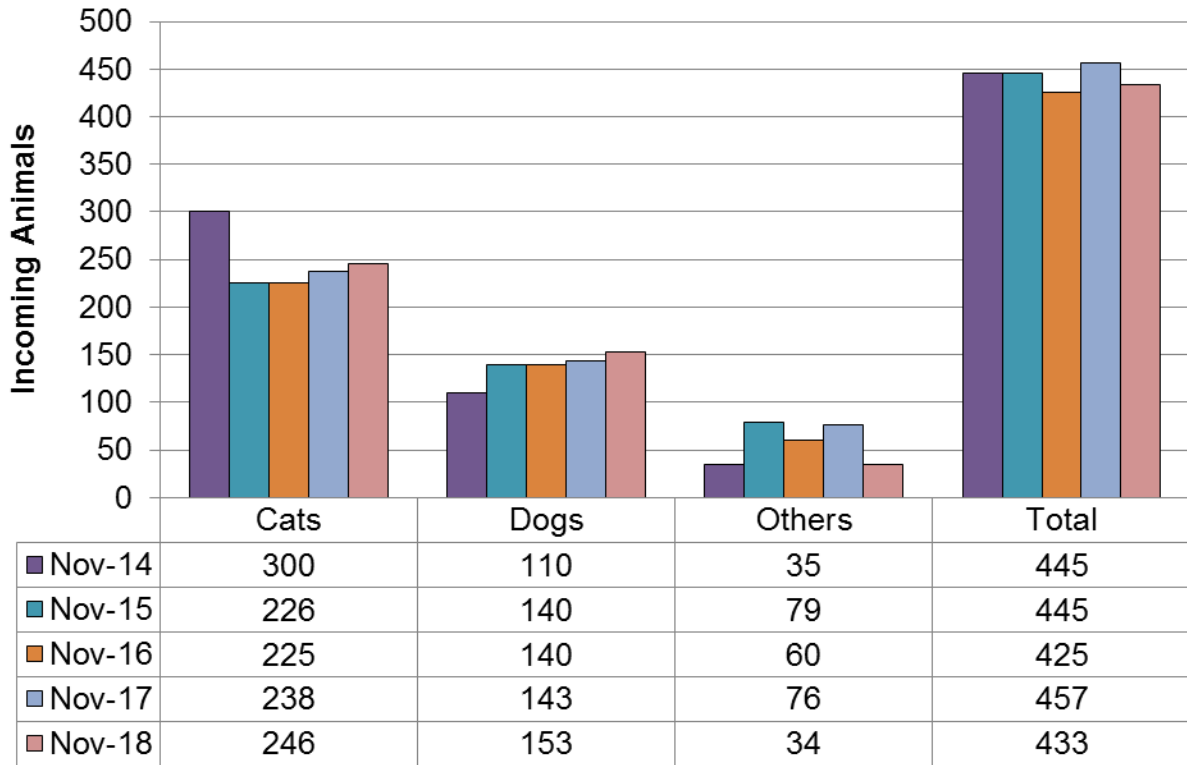
Incoming Transfers November



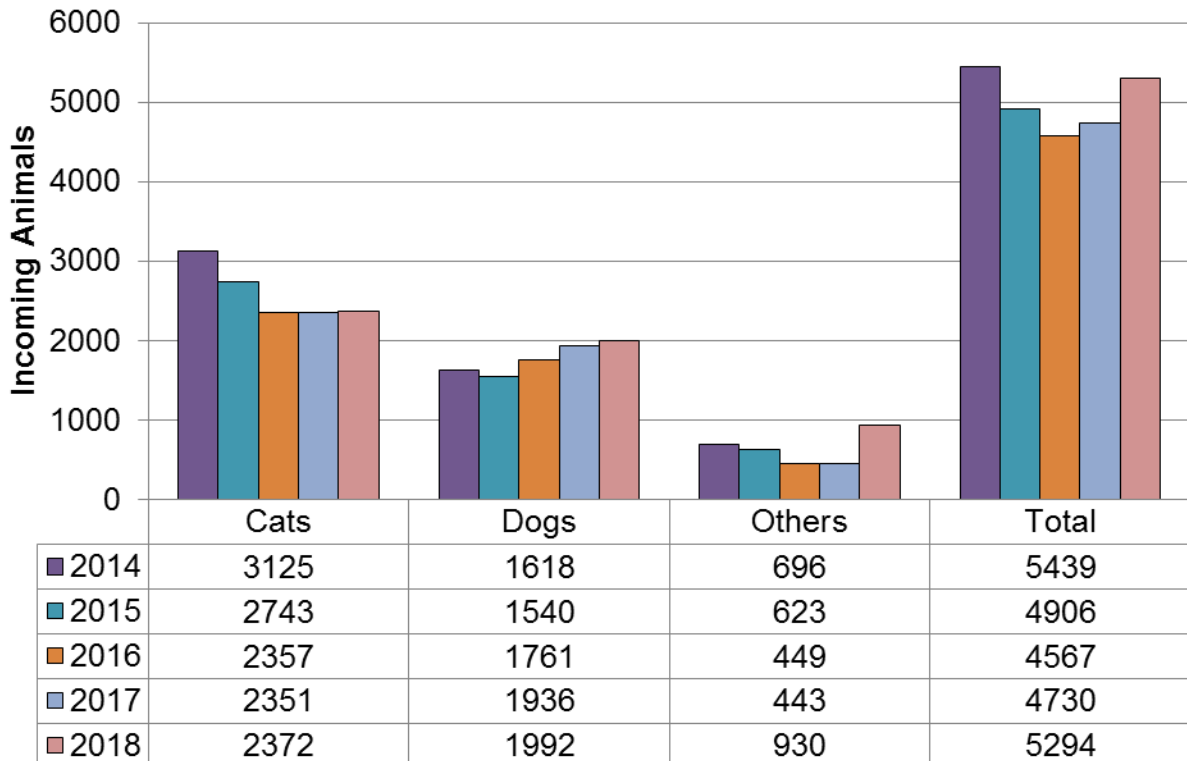
Incoming Transfers Year to Date



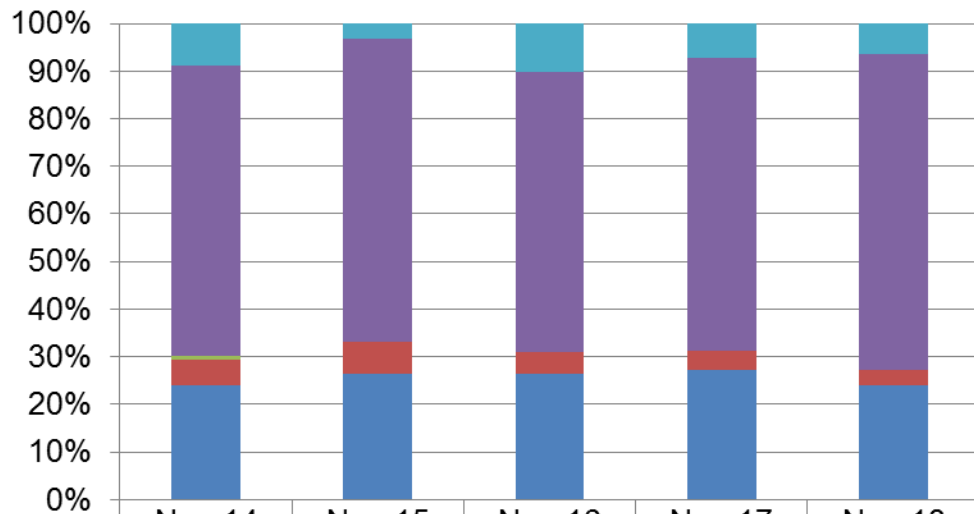
Intake November



Intake Year to Date

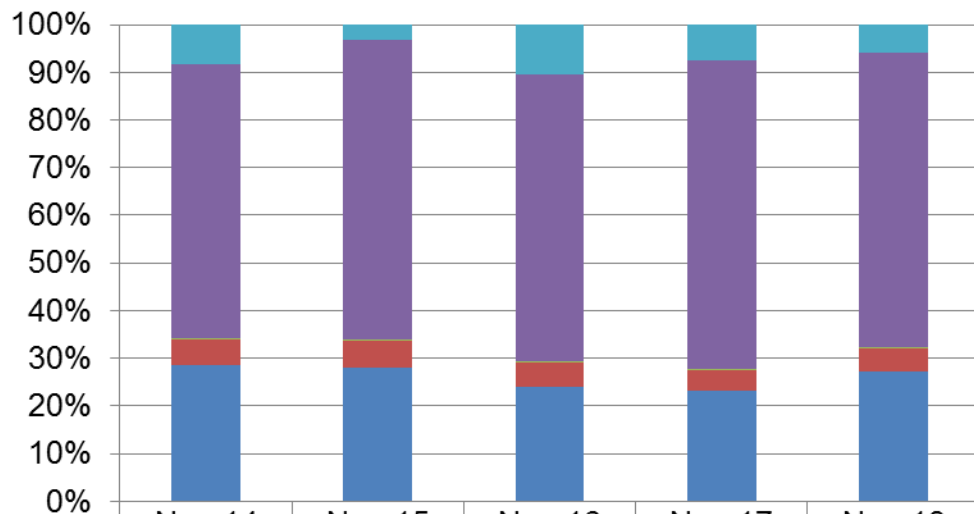


Intakes by Percentage Cats - November



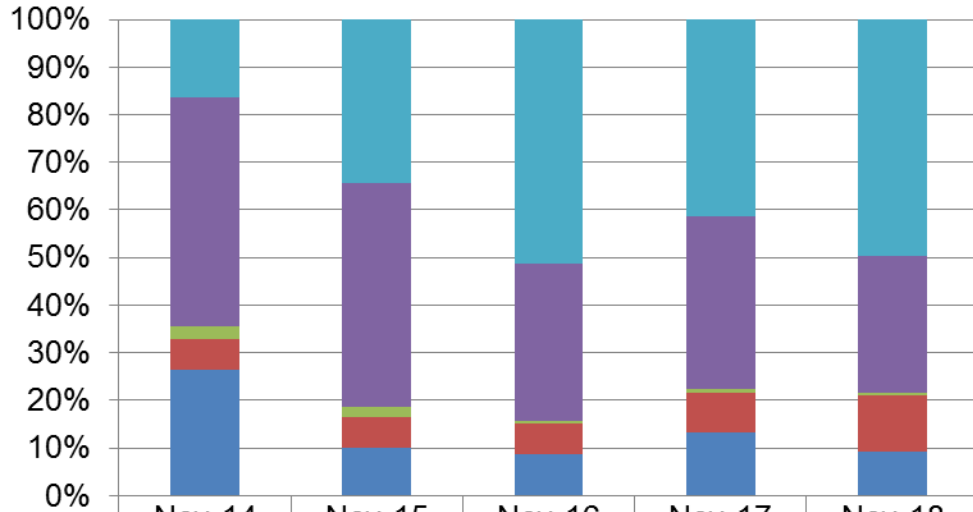
	Nov-14	Nov-15	Nov-16	Nov-17	Nov-18
Incoming Transfers	8.29%	3.17%	10.35%	7.61%	5.99%
Strays	57.63%	62.78%	60.33%	64.61%	61.59%
Seized / Custody	0.67%	0.00%	0.00%	0.00%	0.00%
Returns	5.00%	6.64%	4.44%	4.20%	2.85%
Owner Surrenders	22.67%	26.11%	27.11%	28.57%	22.36%

Intakes by Percentage Cats - Year to Date



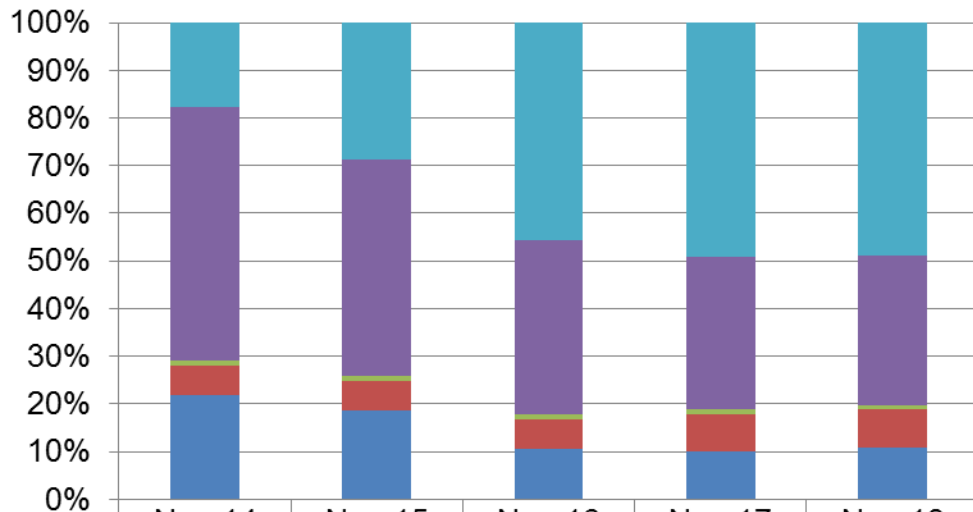
	Nov-14	Nov-15	Nov-16	Nov-17	Nov-18
Incoming Transfers	8.29%	3.17%	10.35%	7.61%	5.99%
Strays	57.63%	62.78%	60.33%	64.61%	61.59%
Seized / Custody	0.26%	0.51%	0.21%	0.30%	0.38%
Returns	5.41%	5.61%	5.22%	4.42%	4.85%
Owner Surrenders	28.42%	27.93%	23.89%	23.05%	27.19%

Intakes by Percentage Dogs - November



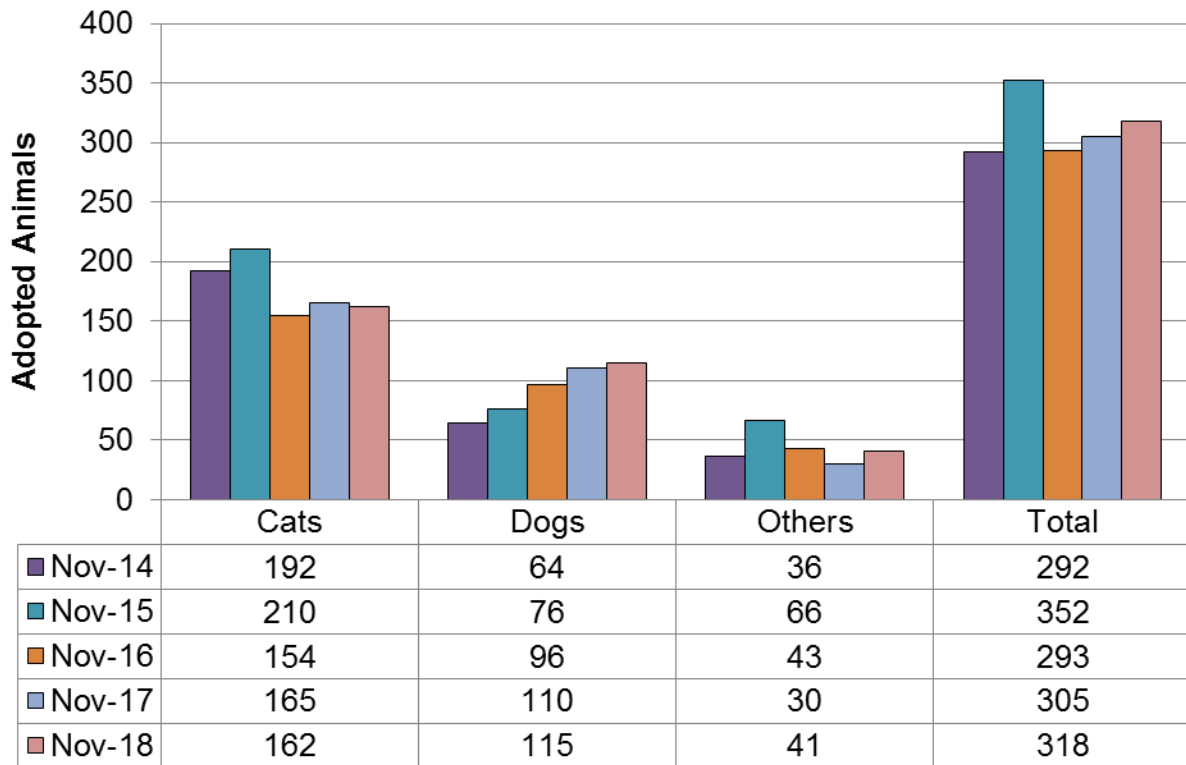
	Nov-14	Nov-15	Nov-16	Nov-17	Nov-18
Incoming Transfers	16.36%	34.29%	51.43%	41.26%	49.67%
Strays	48.18%	47.14%	32.86%	36.36%	28.76%
Seized / Custody	2.73%	2.14%	0.71%	0.70%	0.65%
Returns	6.36%	6.43%	6.43%	8.39%	11.76%
Owner Surrenders	26.36%	10.00%	8.57%	13.29%	9.15%

Intakes by Percentage Dogs - Year to Date

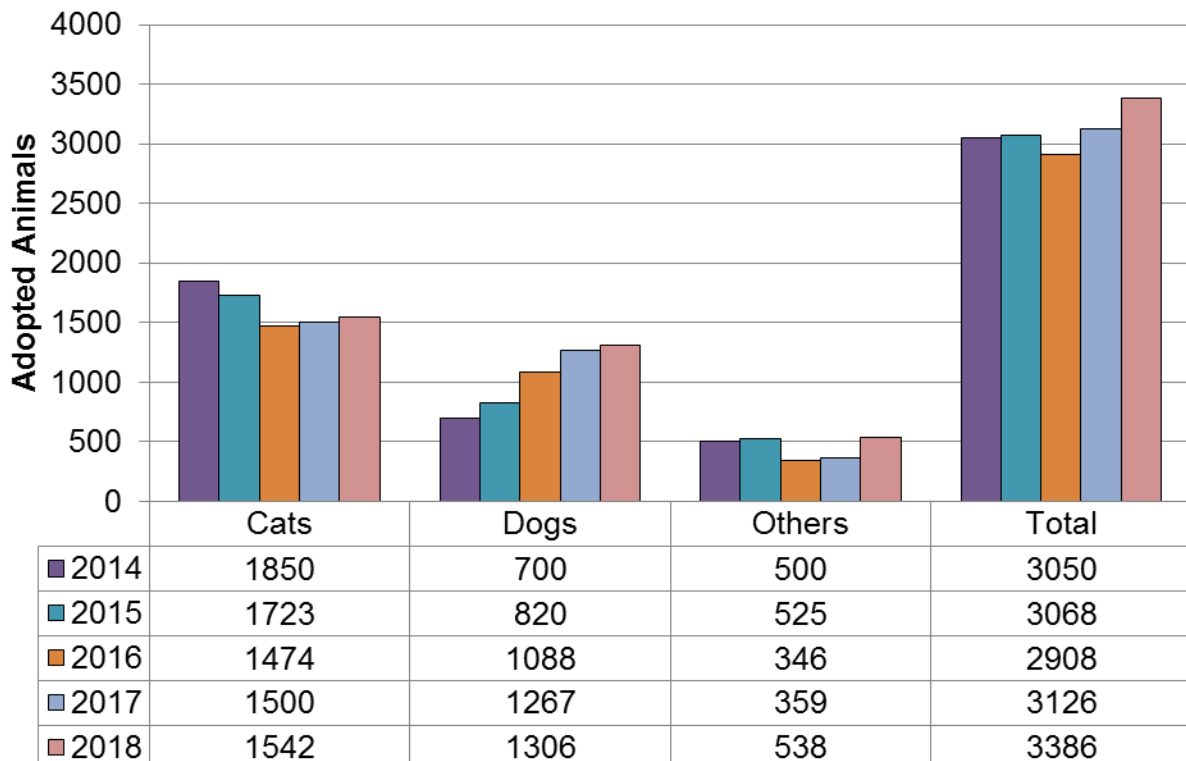


	Nov-14	Nov-15	Nov-16	Nov-17	Nov-18
Incoming Transfers	17.74%	28.83%	45.54%	49.07%	48.85%
Strays	53.09%	45.39%	36.74%	32.08%	31.38%
Seized / Custody	1.11%	1.10%	0.97%	1.14%	0.90%
Returns	6.30%	5.97%	6.25%	7.59%	8.13%
Owner Surrenders	21.76%	18.70%	10.51%	10.12%	10.74%

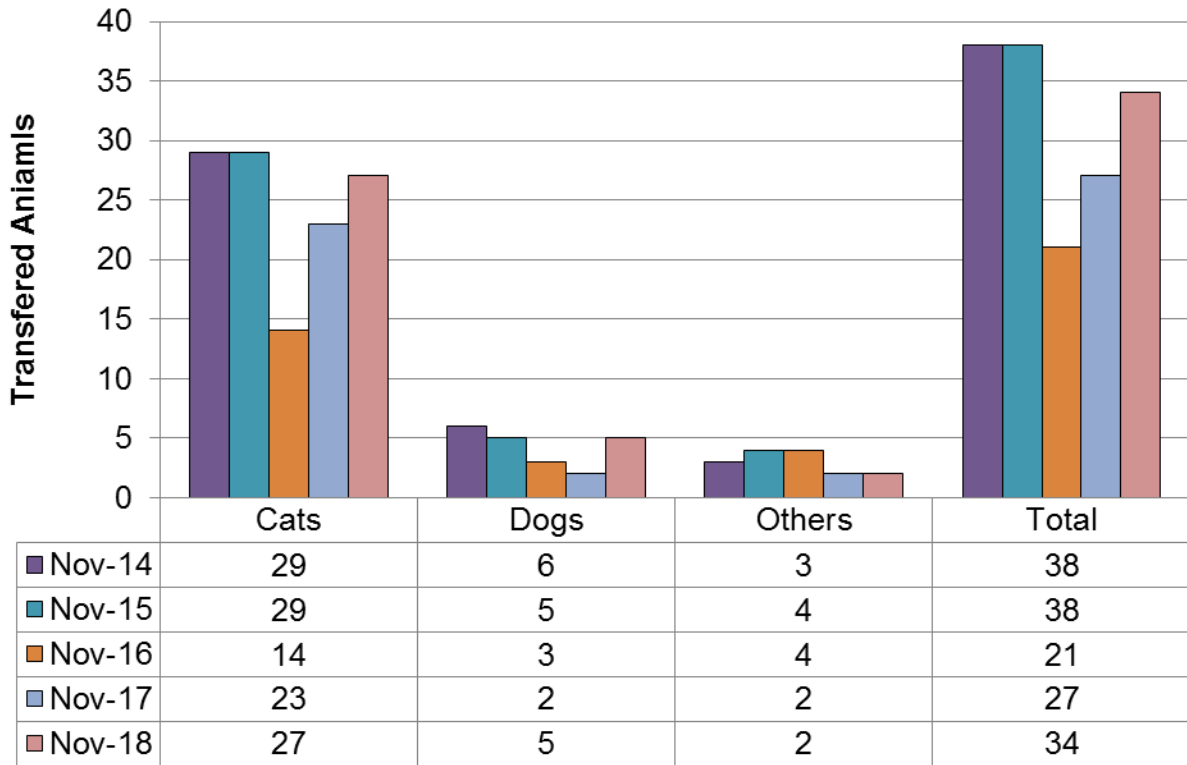
Adoptions November



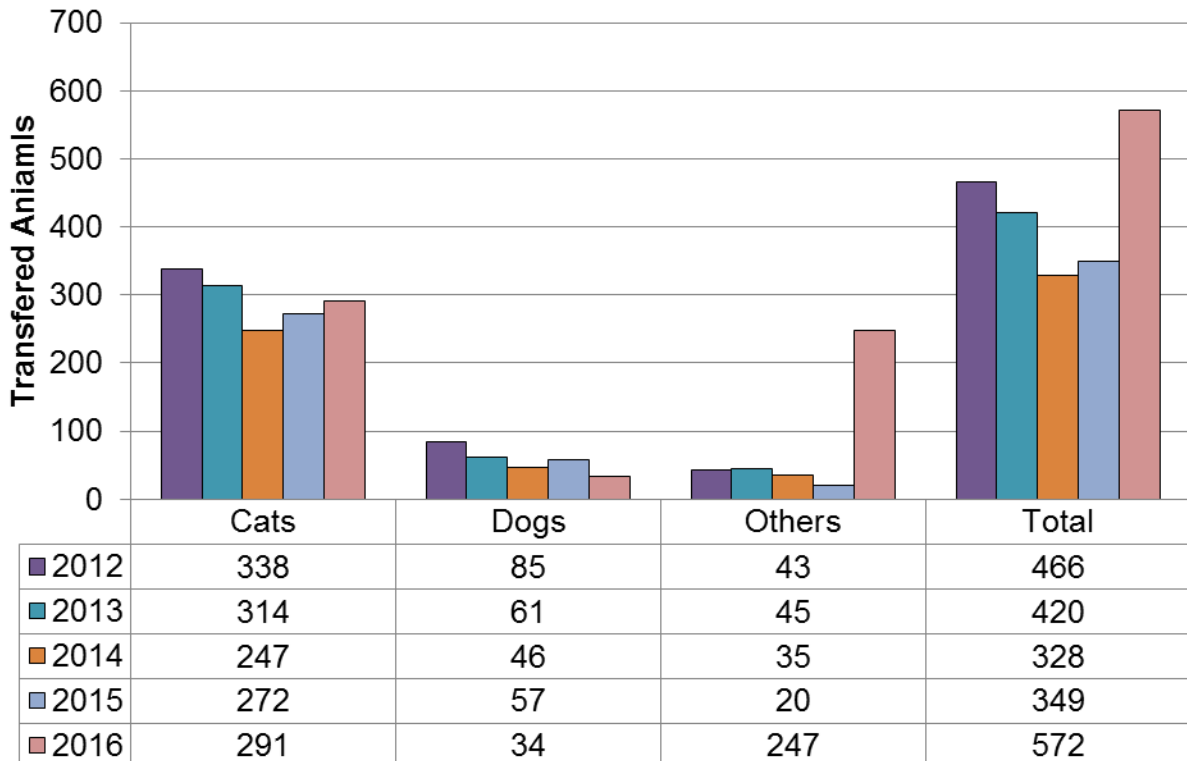
Adoptions Year to Date



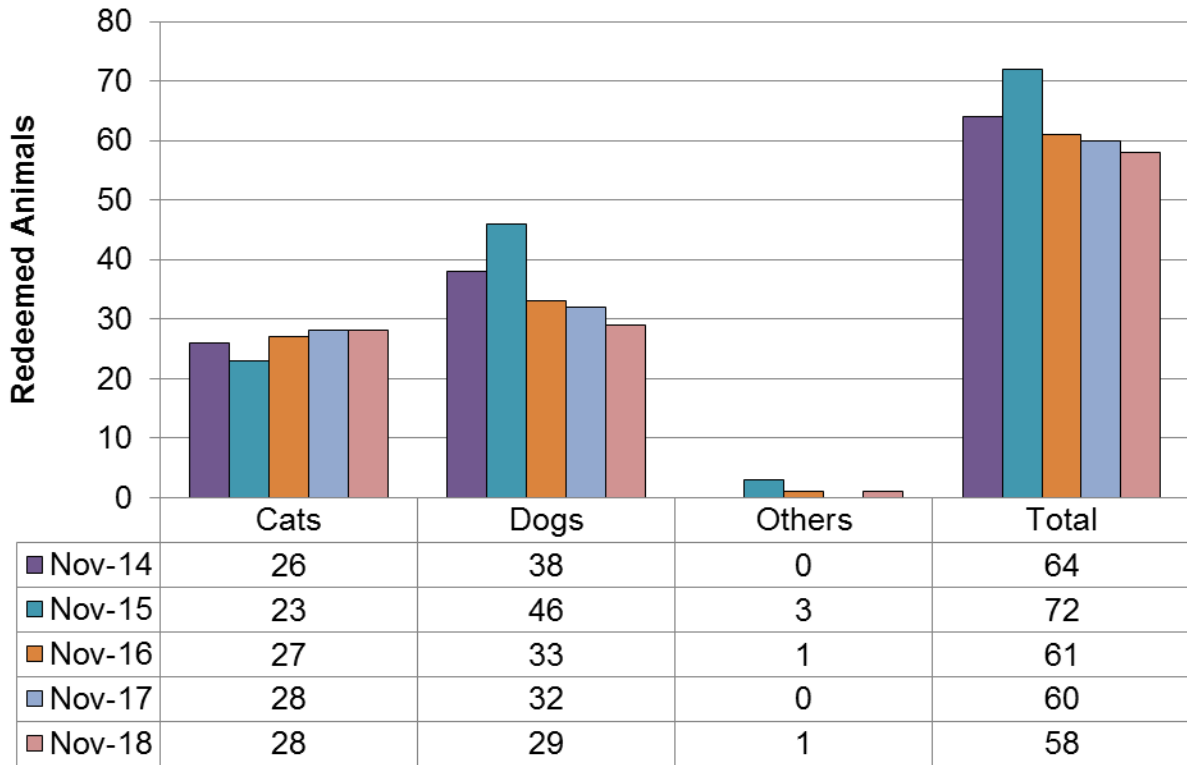
Outgoing Transfers November



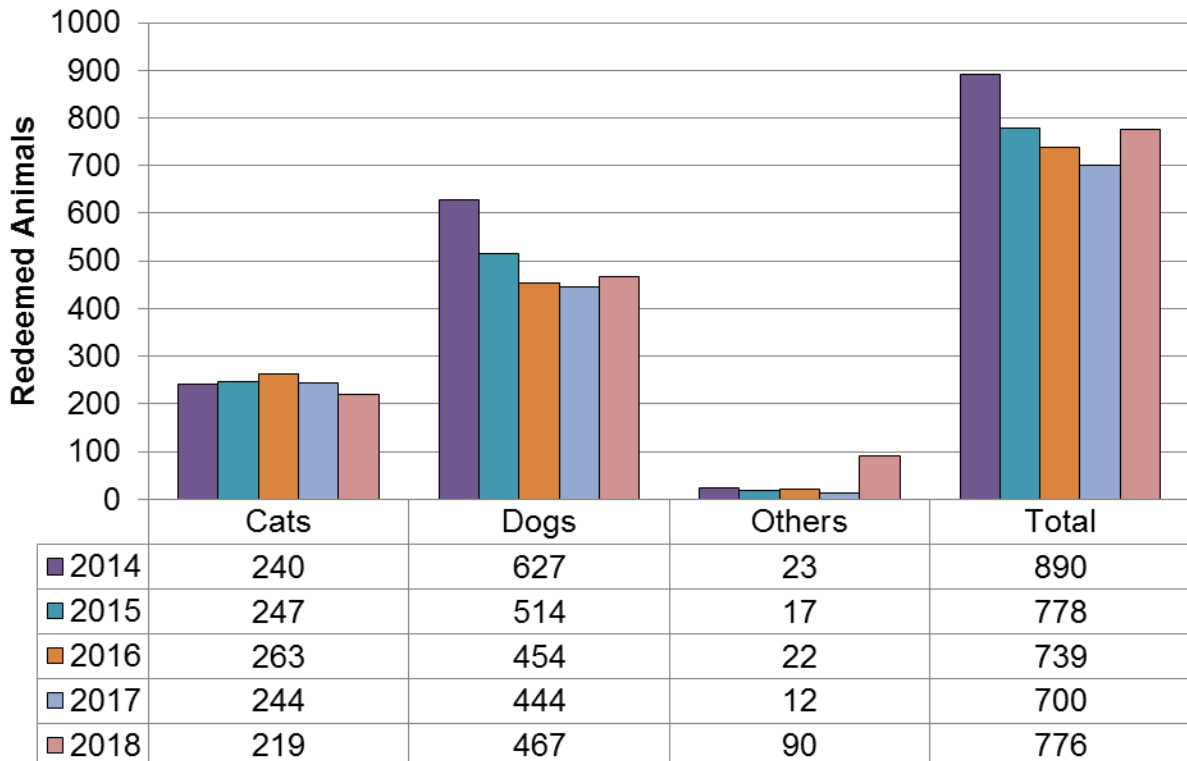
Outgoing Transfers Year to Date



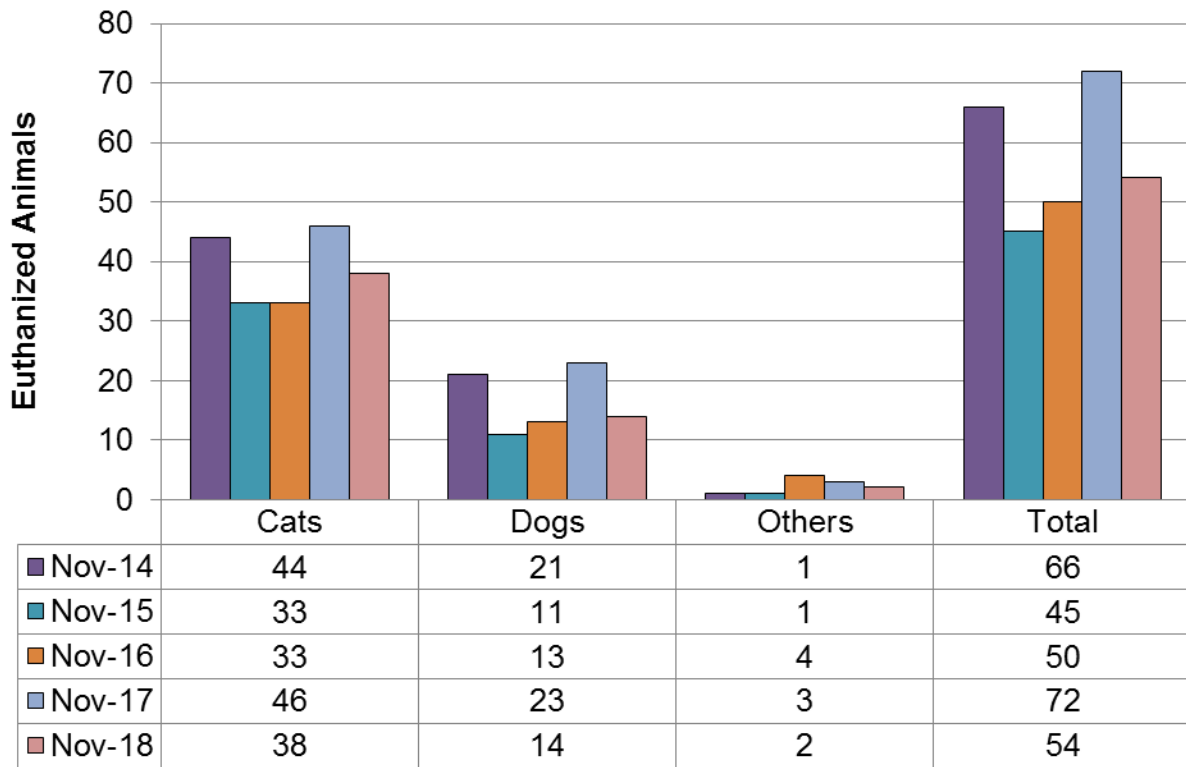
Redemptions November



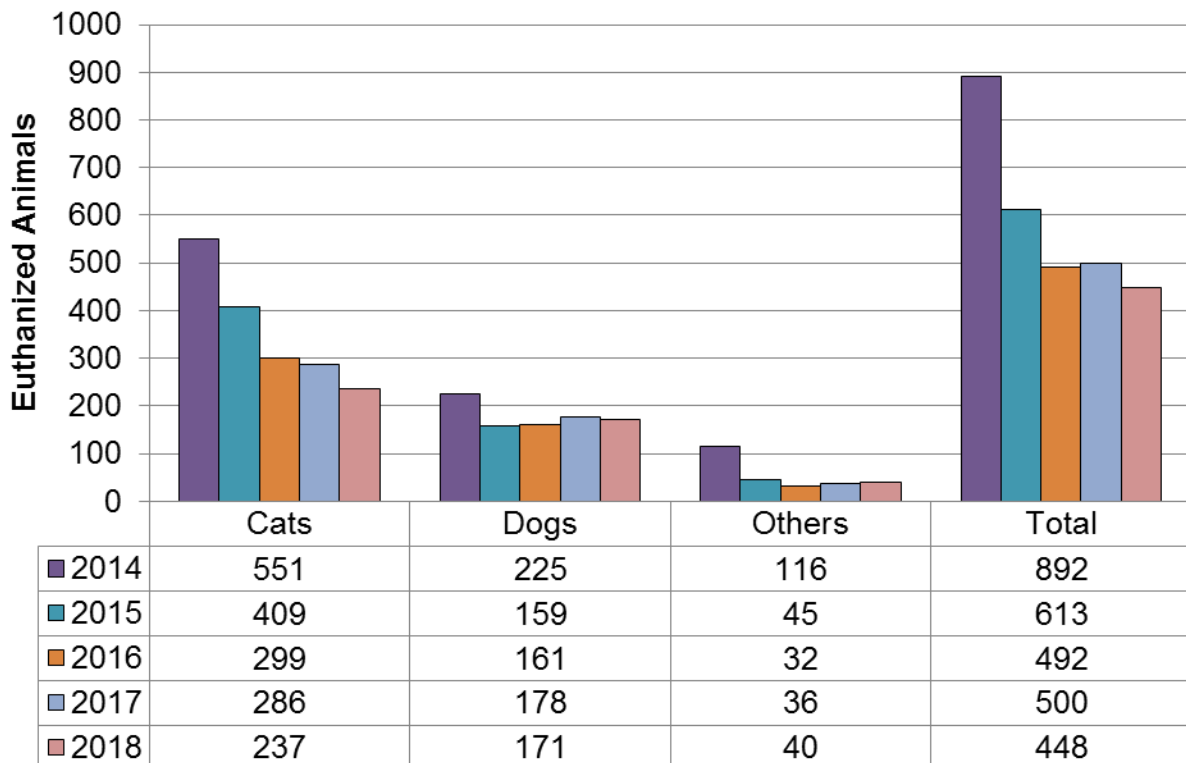
Redemptions Year to Date



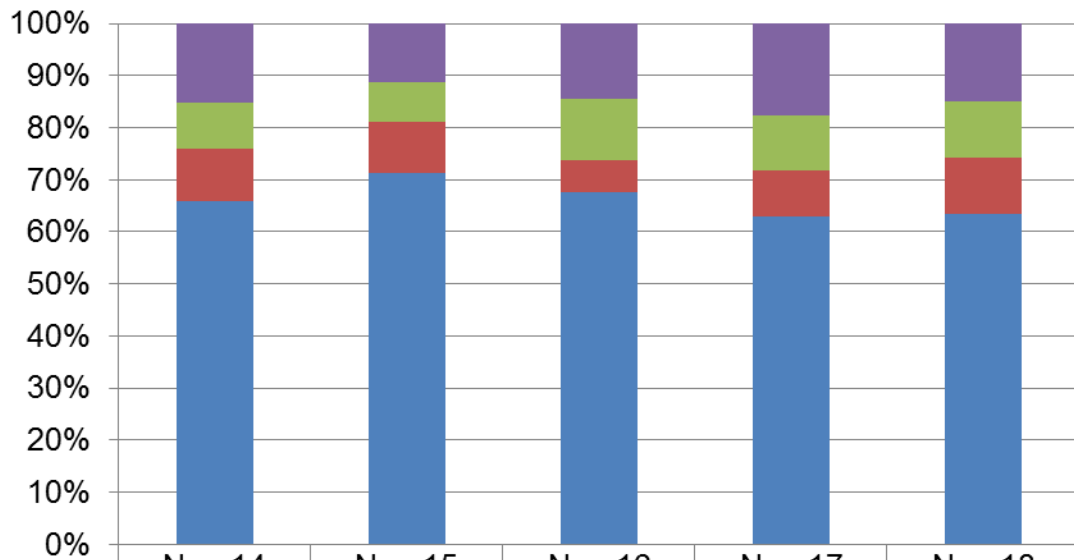
Euthanasia November



Euthanasia Year to Date

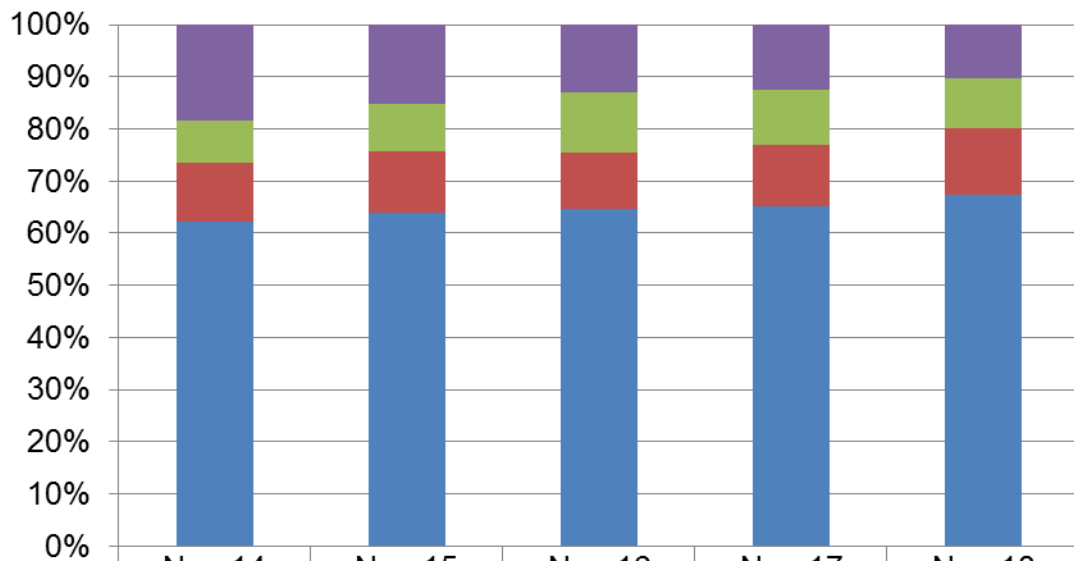


Outcomes by Percentage Cats - November



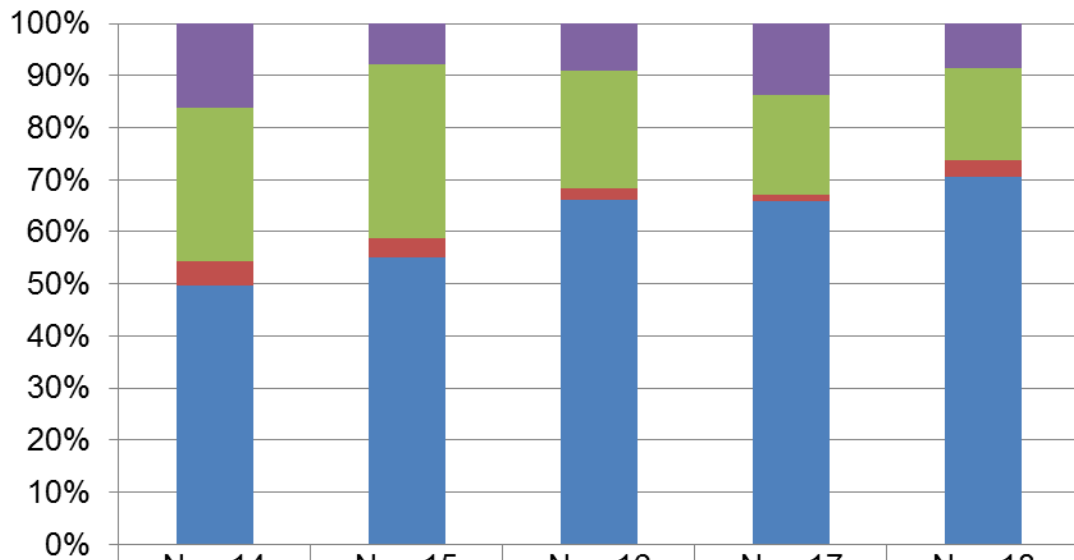
	Nov-14	Nov-15	Nov-16	Nov-17	Nov-18
■ Euthanasia	15.12%	11.19%	14.47%	17.56%	14.90%
■ Redemption	8.93%	7.80%	11.84%	10.69%	10.98%
■ Transfer	9.97%	9.83%	6.14%	8.78%	10.59%
■ Adoption	65.98%	71.19%	67.54%	62.98%	63.53%

Outcomes by Percentage Cats - Year to Date



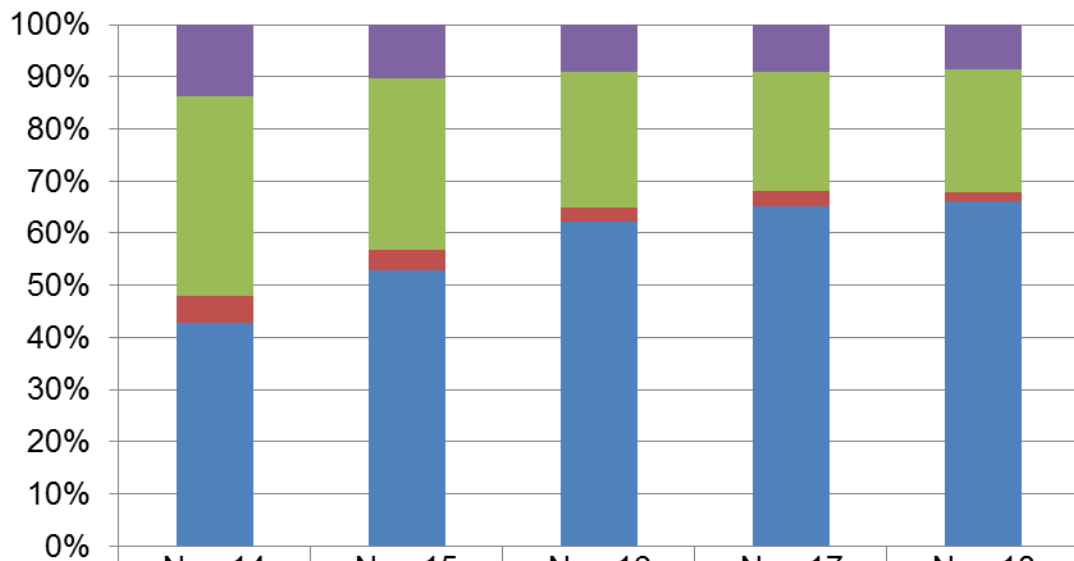
	Nov-14	Nov-15	Nov-16	Nov-17	Nov-18
■ Euthanasia	18.50%	15.19%	13.10%	12.42%	10.35%
■ Redemption	8.06%	9.17%	11.52%	10.60%	9.57%
■ Transfer	11.35%	11.66%	10.82%	11.82%	12.71%
■ Adoption	62.10%	63.98%	64.56%	65.16%	67.37%

Outcomes by Percentage Dogs - November



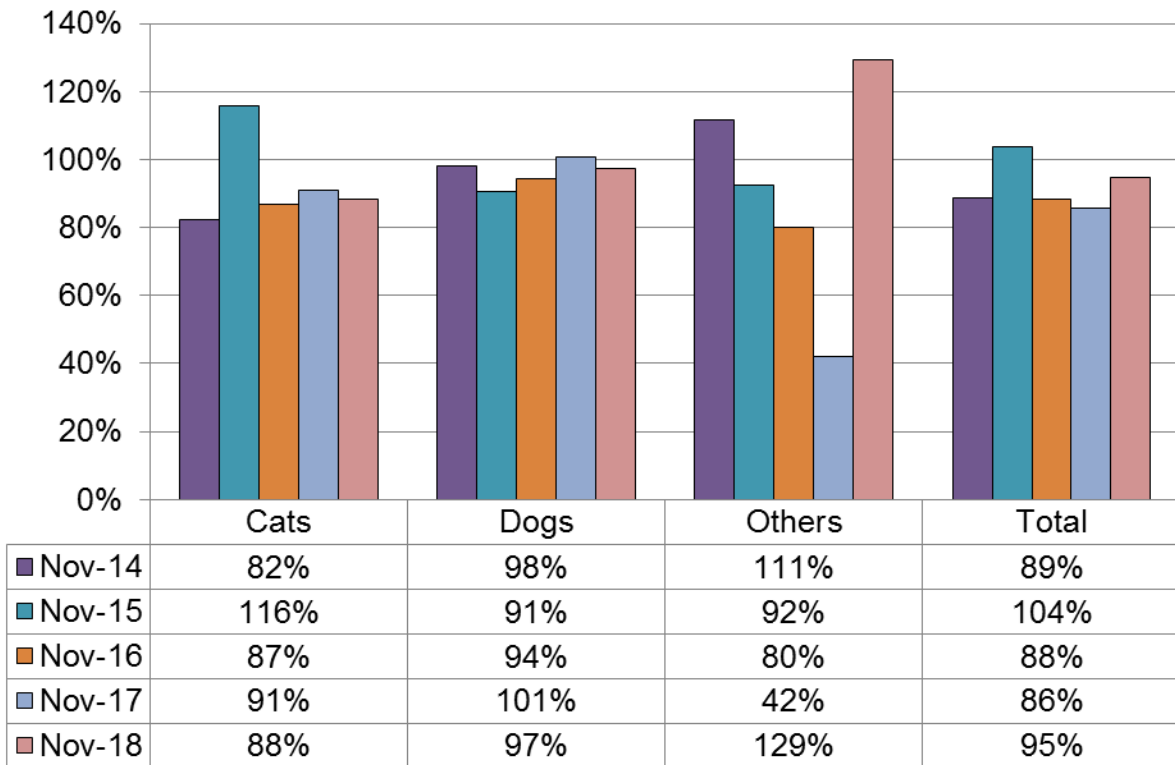
	Nov-14	Nov-15	Nov-16	Nov-17	Nov-18
Euthanasia	16.28%	7.97%	8.97%	13.77%	8.59%
Redemption	29.46%	33.33%	22.76%	19.16%	17.79%
Transfer	4.65%	3.62%	2.07%	1.20%	3.07%
Adoption	49.61%	55.07%	66.21%	65.87%	70.55%

Outcomes by Percentage Dogs - Year to Date

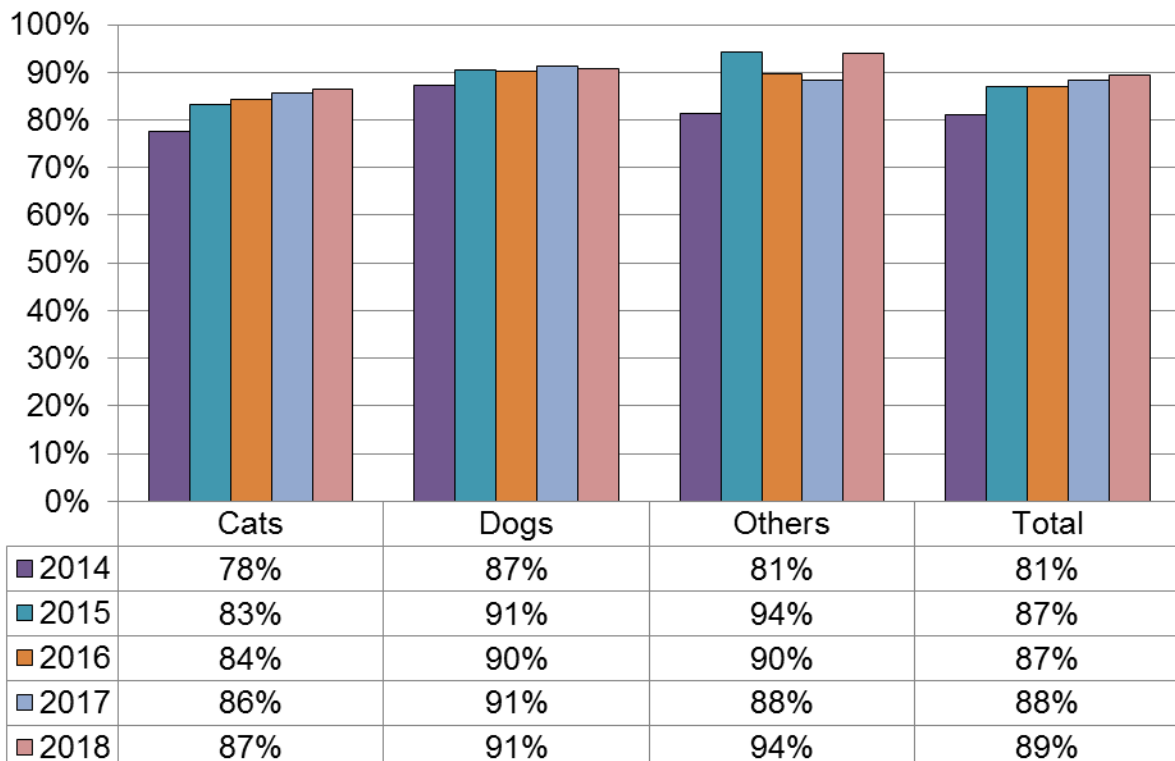


	Nov-14	Nov-15	Nov-16	Nov-17	Nov-18
Euthanasia	13.74%	10.23%	9.21%	9.15%	8.65%
Redemption	38.30%	33.08%	25.96%	22.82%	23.61%
Transfer	5.19%	3.93%	2.63%	2.93%	1.72%
Adoption	42.76%	52.77%	62.21%	65.11%	66.03%

Save Rate November



Save Rate Year to Date



Terms and Definitions:

Adoption – The placement of an animal with a new owner/family.

Euthanasia – The act of putting an animal to death painlessly.

Euthanasia Rate – The percentage of animals euthanized during a given time period. For statistical purposes, this number does not include animals admitted specifically for euthanasia.

$$\text{Euthanasia Rate} = \text{Euthanasia} / (\text{Intake} + \text{Inventory})$$

Intake – The number of live animals admitted. For statistical purposes, this number does not include animals admitted specifically for euthanasia.

Live Release Rate – The percentage of live animals released by means of adoption, redemption and transfer during a given time period. The difference between Live Release Rate and Save Rate (see Save Rate) is that Live Release Rate takes into account the starting animal inventory for the given time period. This results in a more accurate reflection of live release versus population. DCHS started using Live Release Rate in 2008.

$$\text{Live Release Rate} = (\text{Adoptions} + \text{Redemptions} + \text{Transfers}) / (\text{Intake} + \text{Inventory})$$

Redemption – The reclaiming of an animal by an existing or previous owner.

Rolling Release Rate – A compilation of Live Release Rate, Euthanasia Rate and Sanctuary Rate.

Sanctuary Rate – The percentage of animals remaining in the shelter's care at the end of a given time period.

$$\text{Sanctuary Rate} = ((\text{Inventory} + \text{Intake}) - (\text{Adoptions} + \text{Redemptions} + \text{Transfers} + \text{Euthanasia})) / (\text{Intake} + \text{Inventory})$$

Save Rate – The percentage of live animals released by means of adoption, redemption and transfer during a given time period. Save Rate is an older and previously widely used formula for calculating a shelter's success but does not include the starting animal inventory for the given time period. This results in a less accurate reflection of live release versus population and could even generate percentages above 100% (for example if during a given time period 10 animals were adopted but only 5 were admitted, the Save Rate would equal 200% because the existing inventory of 5+ animals are not taken into consideration). Save Rate is still commonly used by shelters and is still calculated at DCHS for the purpose of comparisons to other shelter that still use Save Rate and for comparison to past years before Live Release Rate started to be calculated in 2008.

$$\text{Save Rate} = (\text{Adoption} + \text{Redemptions} + \text{Transfers}) / \text{Intake}$$

Transfer – The placement of an animal with another animal welfare organization.