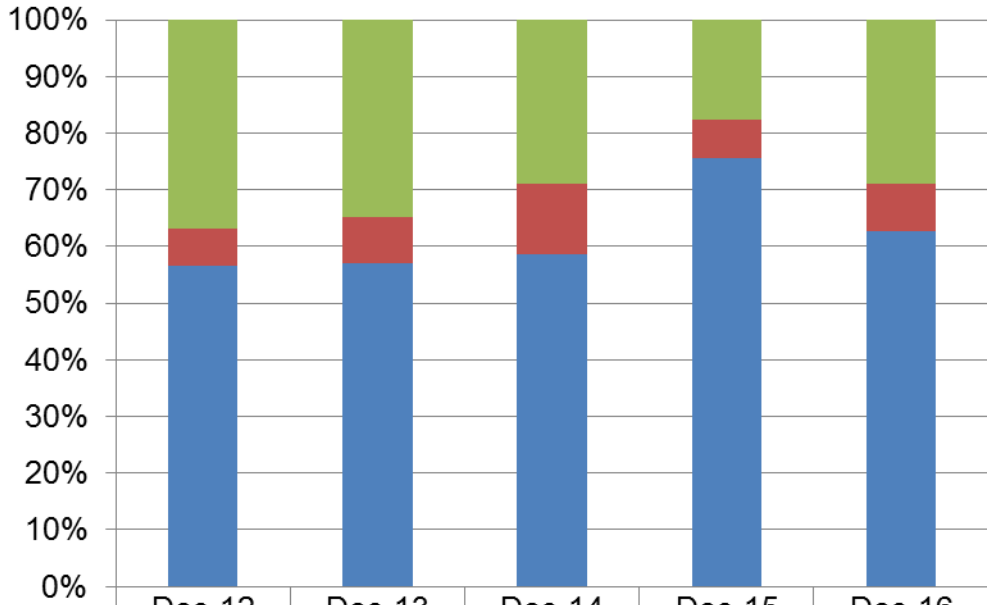


Dane County Humane Society
Rolling Release Rate
&
Save Rate
Overview

December 2016

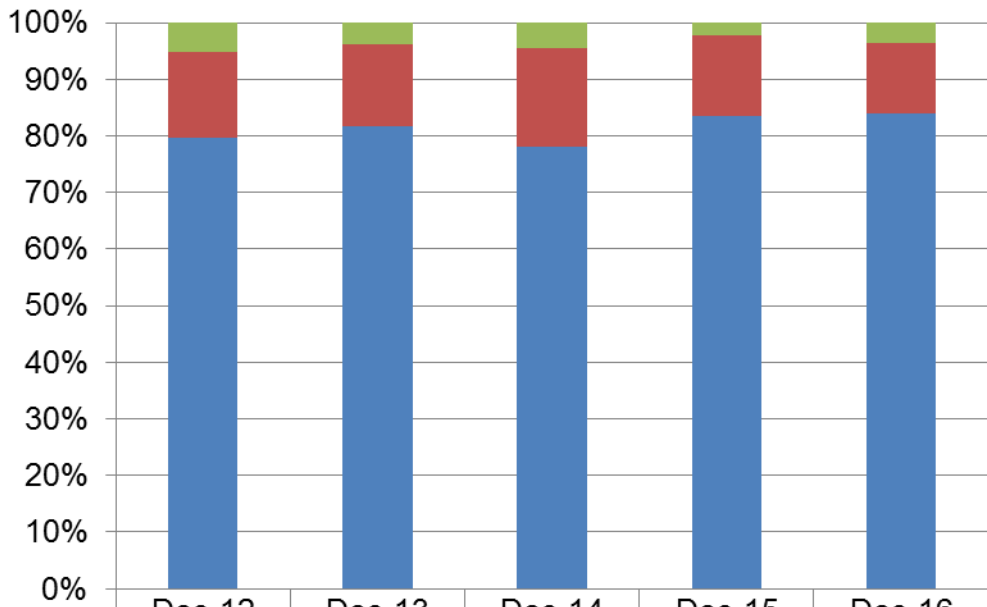
Report prepared by:
Doug Brown
Assistant Executive Director
Dane County Humane Society

Cat Rolling Release Rate December



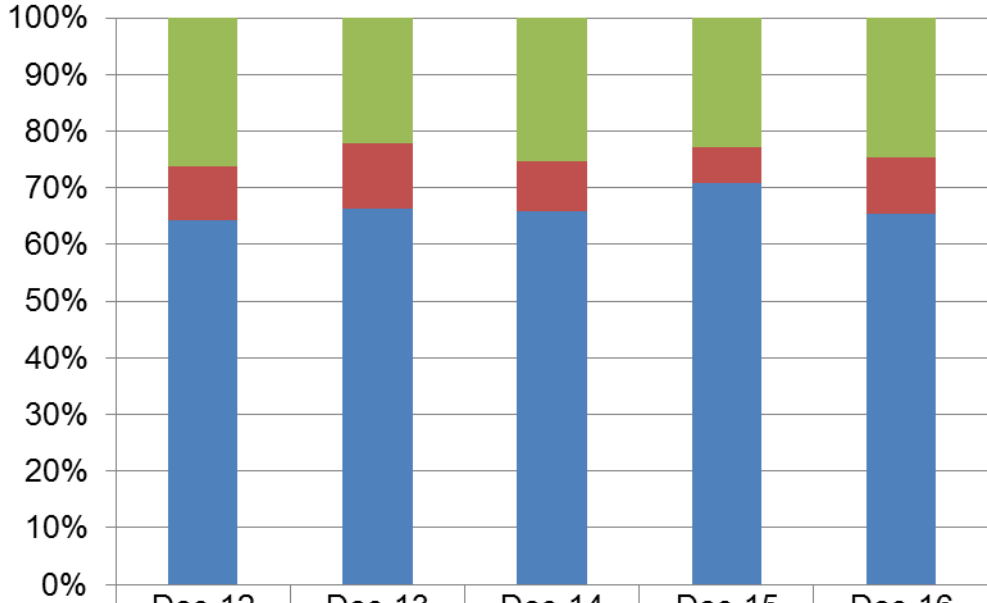
	Dec-12	Dec-13	Dec-14	Dec-15	Dec-16
Sanctuary Rate	36.77%	34.88%	28.94%	17.61%	28.90%
Euthanasia Rate	6.69%	8.17%	12.50%	6.92%	8.44%
Live Release Rate	56.55%	56.95%	58.56%	75.47%	62.66%

Cat Rolling Release Rate Year to Date



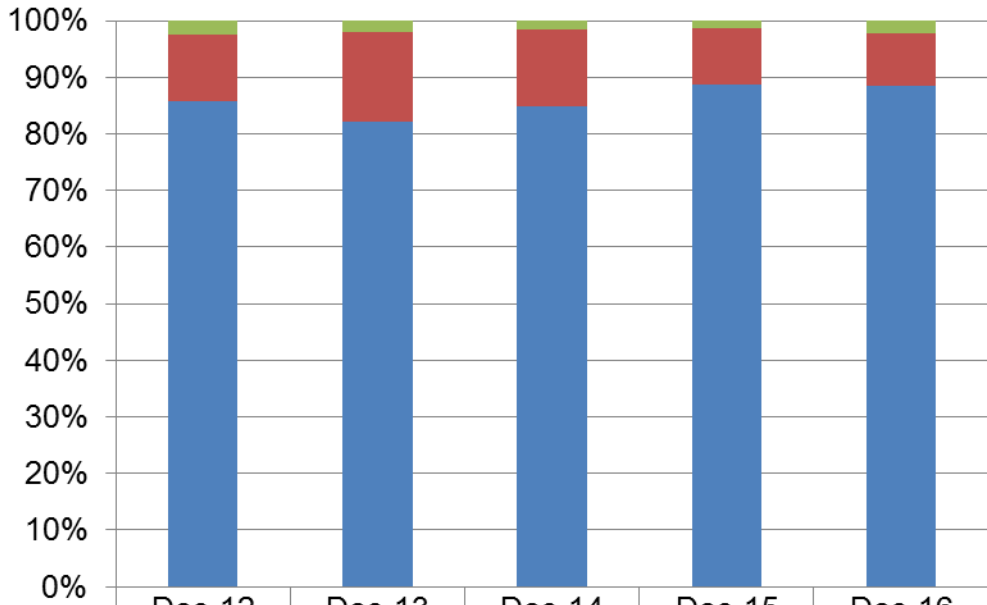
	Dec-12	Dec-13	Dec-14	Dec-15	Dec-16
Sanctuary Rate	5.23%	3.88%	4.45%	2.18%	3.51%
Euthanasia Rate	15.07%	14.51%	17.59%	14.27%	12.53%
Live Release Rate	79.70%	81.61%	77.96%	83.55%	83.96%

Dog Rolling Release Rate December



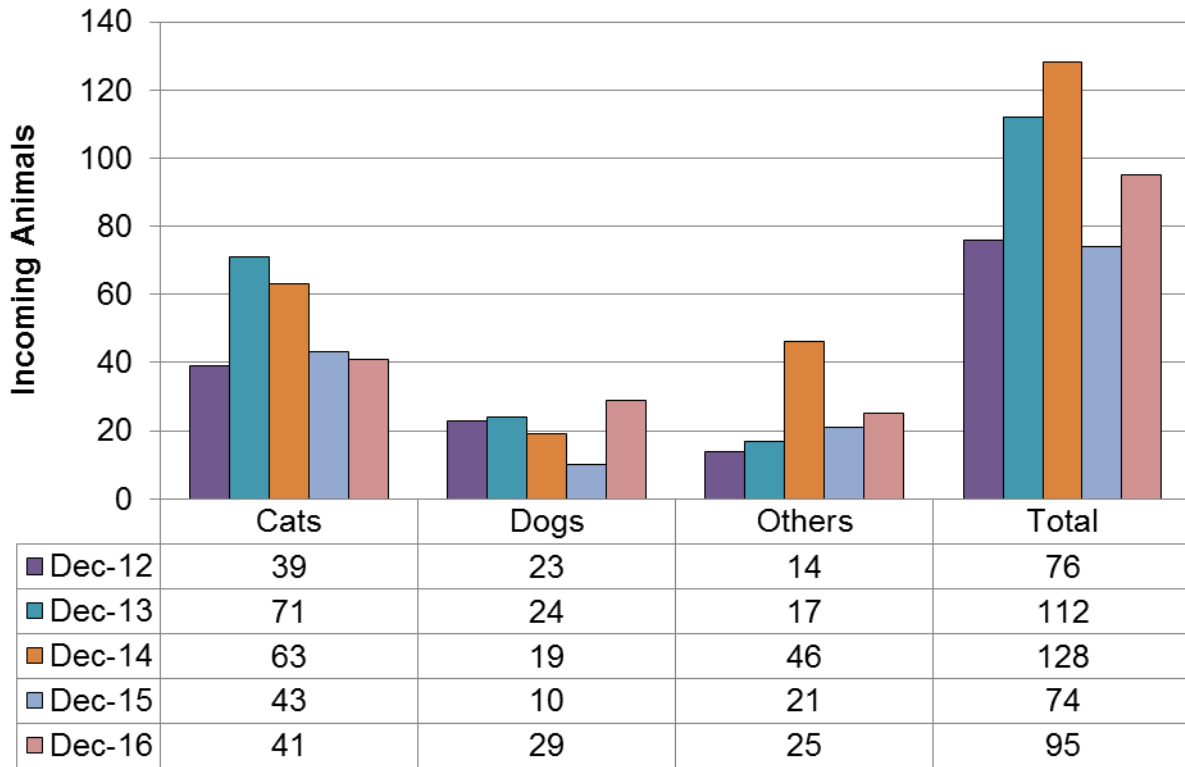
	Dec-12	Dec-13	Dec-14	Dec-15	Dec-16
Sanctuary Rate	26.25%	22.09%	25.34%	22.76%	24.75%
Euthanasia Rate	9.38%	11.66%	8.90%	6.50%	9.90%
Live Release Rate	64.38%	66.26%	65.75%	70.73%	65.35%

Dog Rolling Release Rate Year to Date

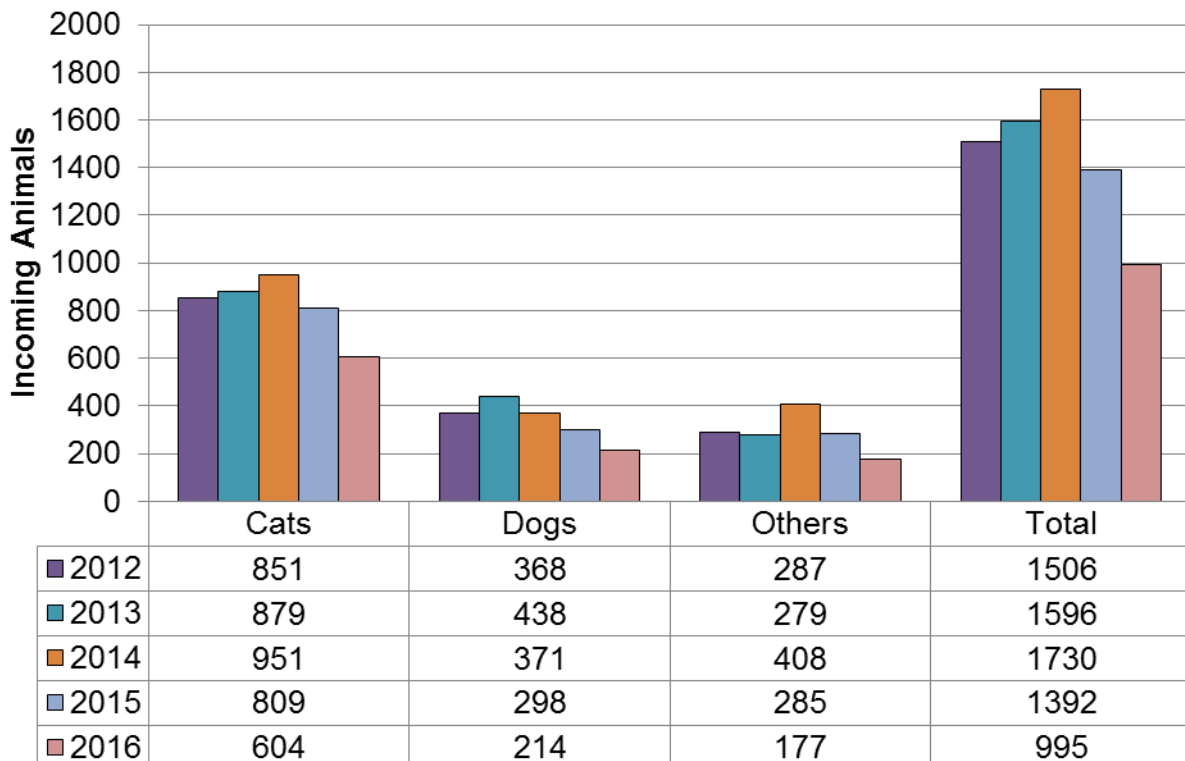


	Dec-12	Dec-13	Dec-14	Dec-15	Dec-16
Sanctuary Rate	2.41%	1.97%	1.63%	1.43%	2.26%
Euthanasia Rate	11.73%	15.82%	13.41%	9.98%	9.31%
Live Release Rate	85.86%	82.21%	84.96%	88.58%	88.43%

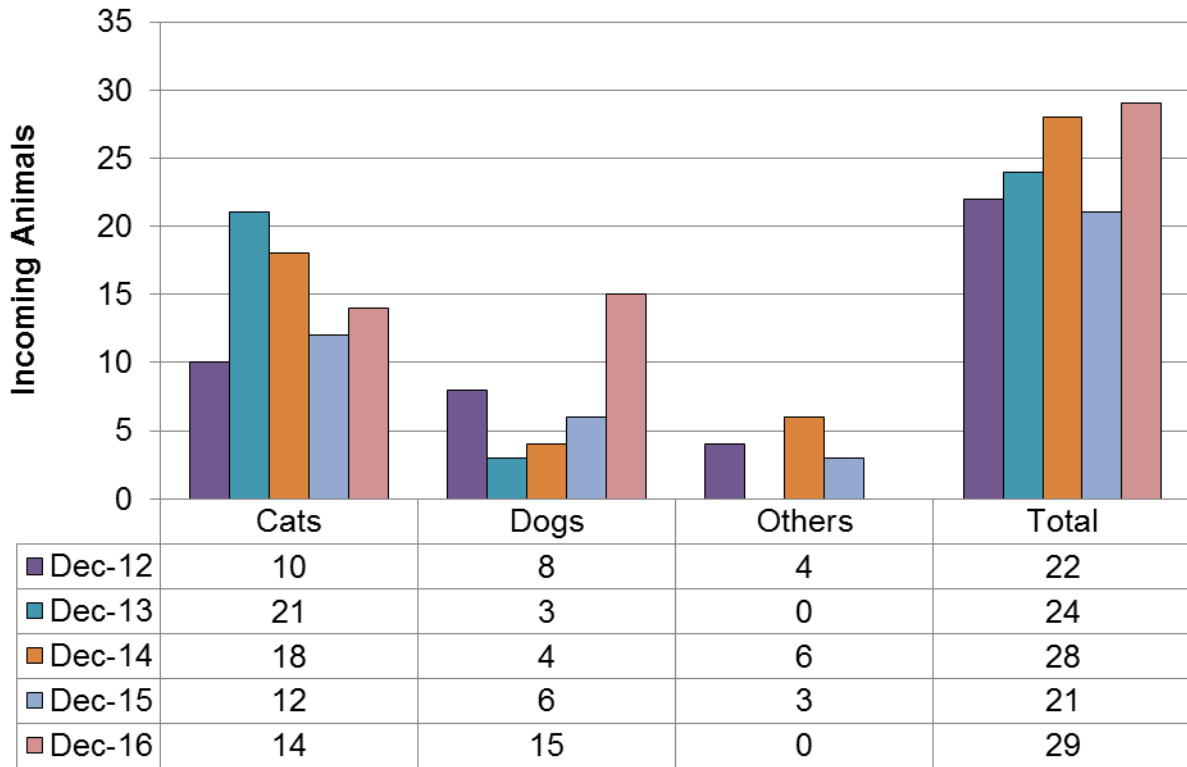
Surrenders December



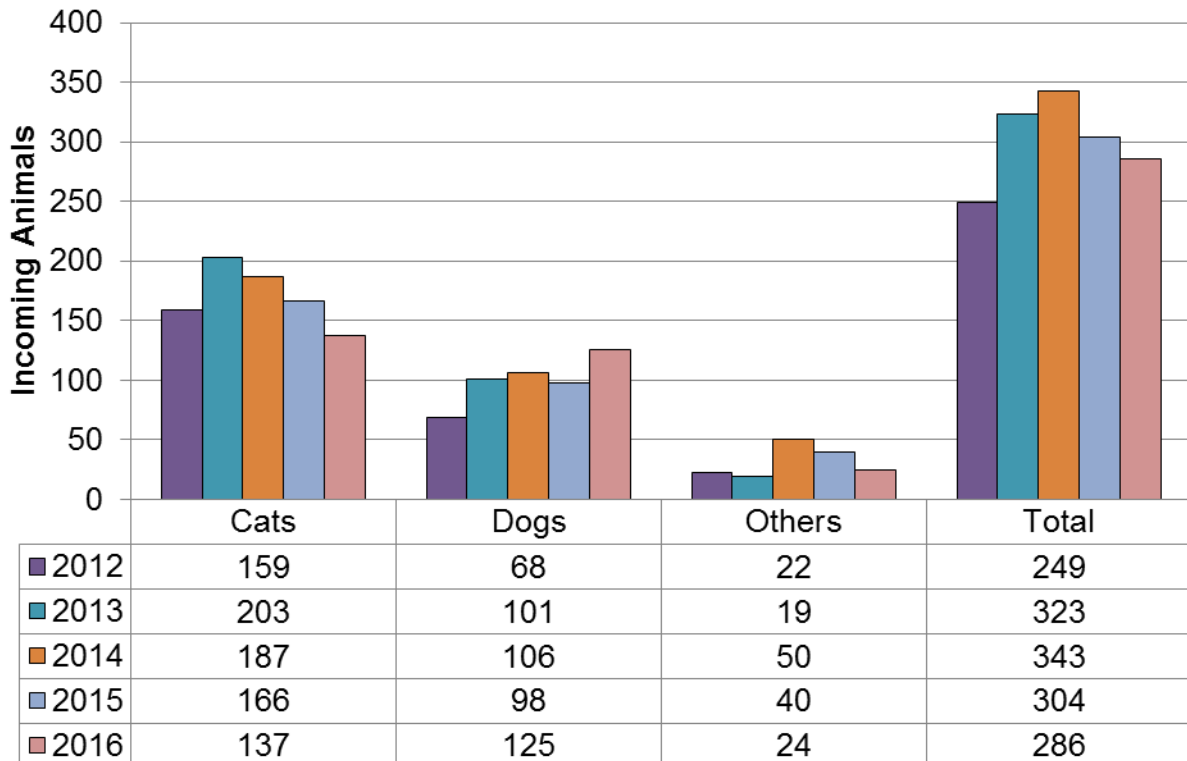
Surrenders Year to Date



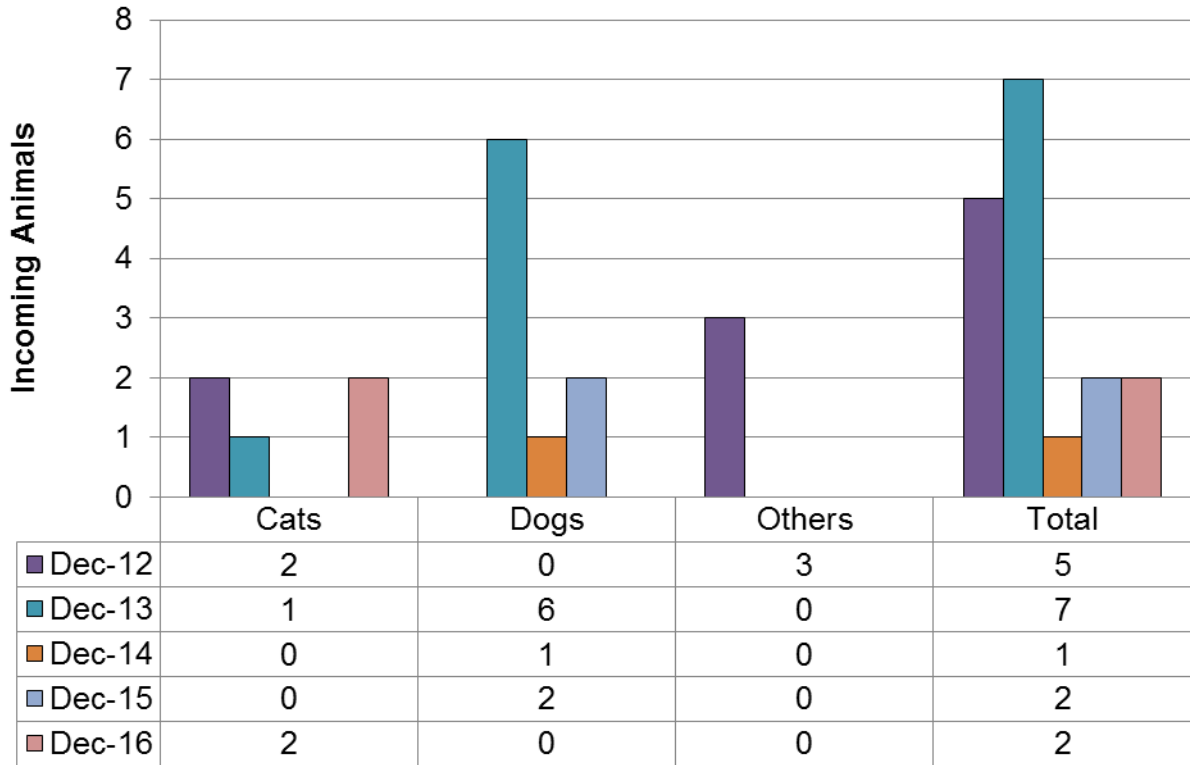
Returns December



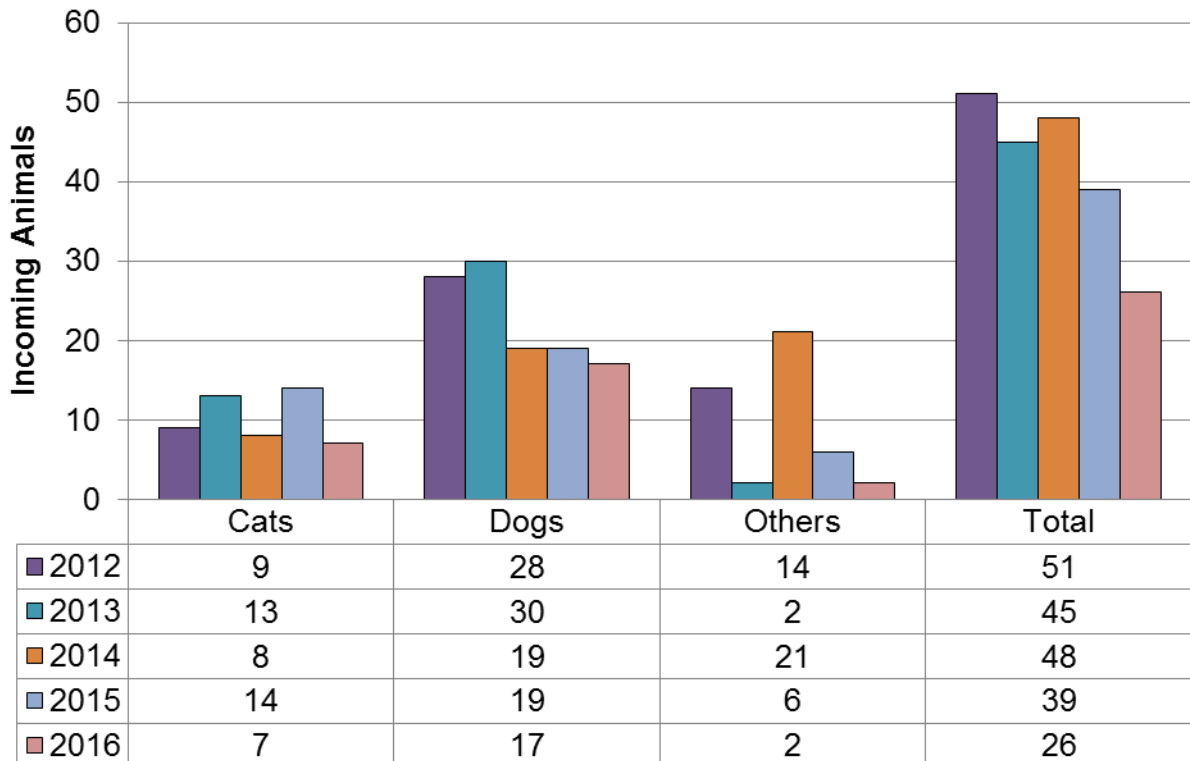
Returns Year to Date



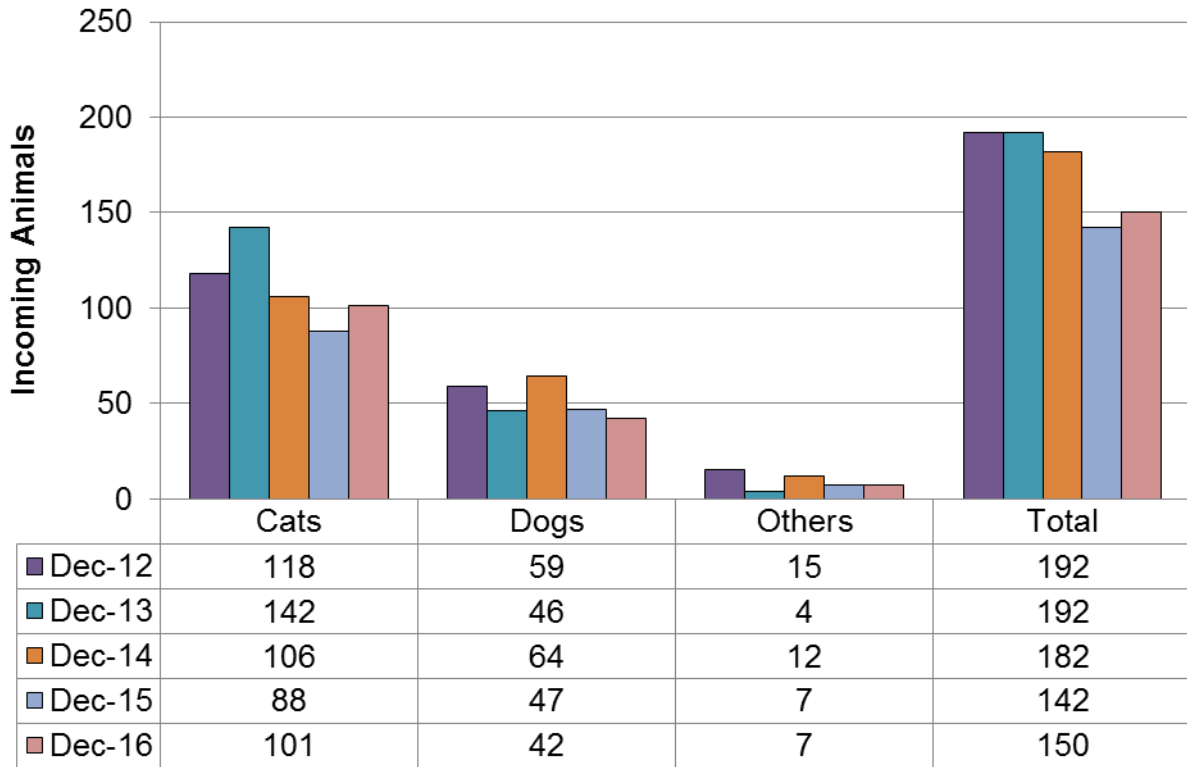
Seized / Custody December



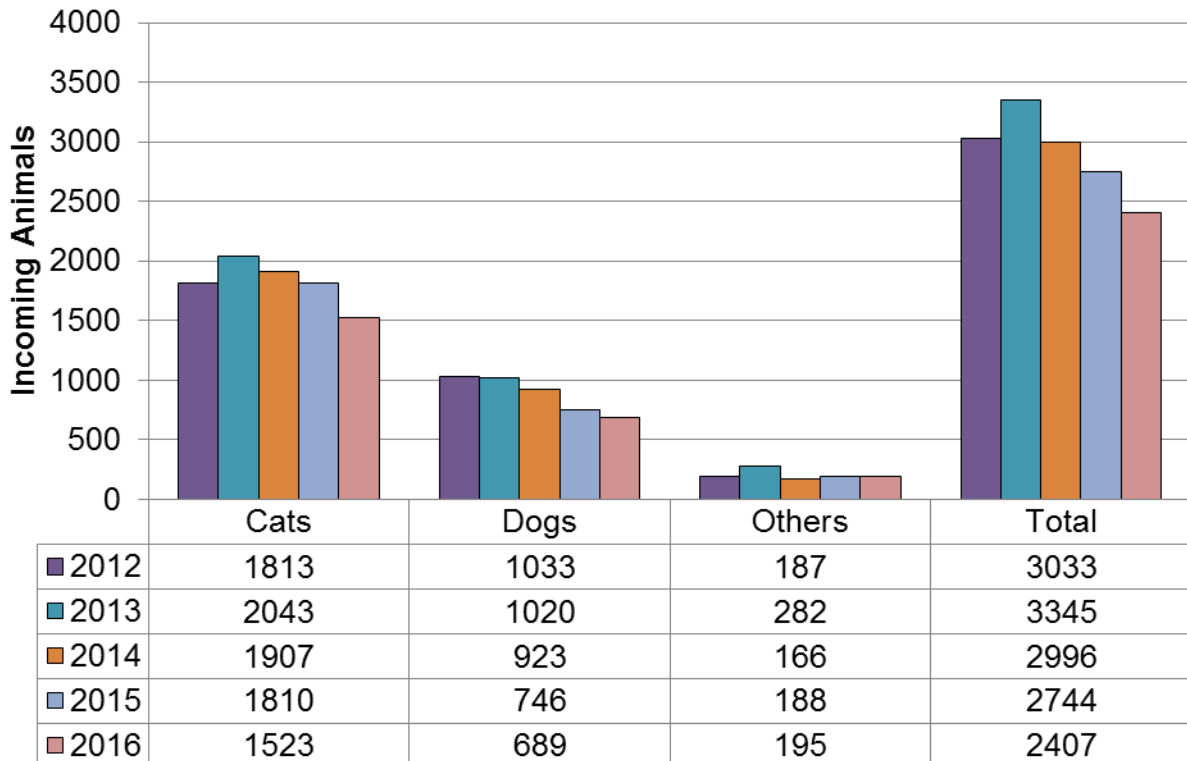
Seized / Custody Year to Date



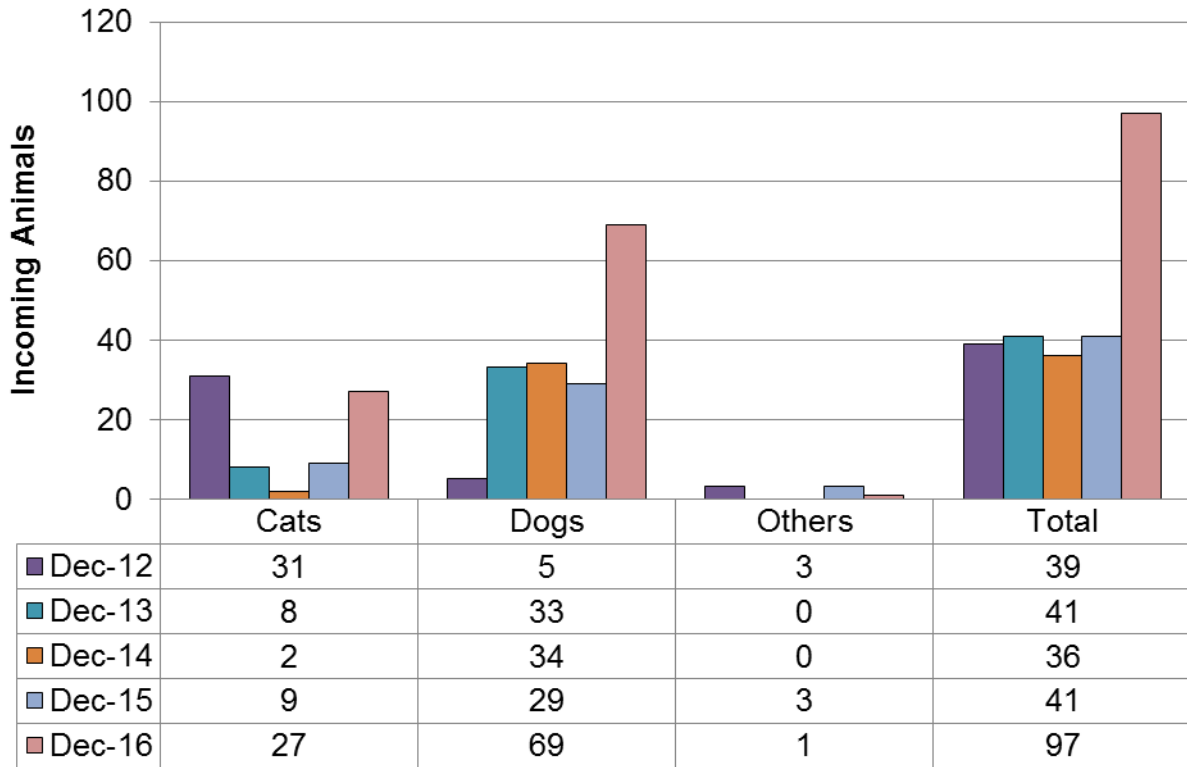
Stray December



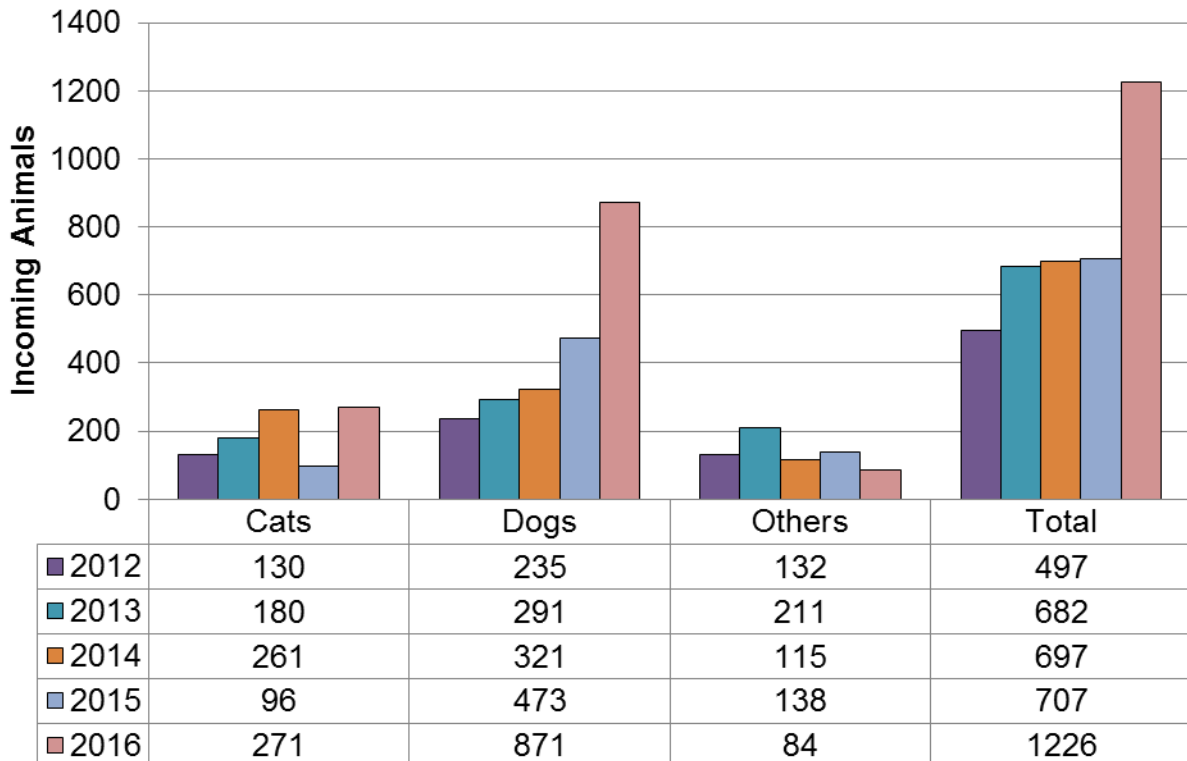
Stray Year to Date



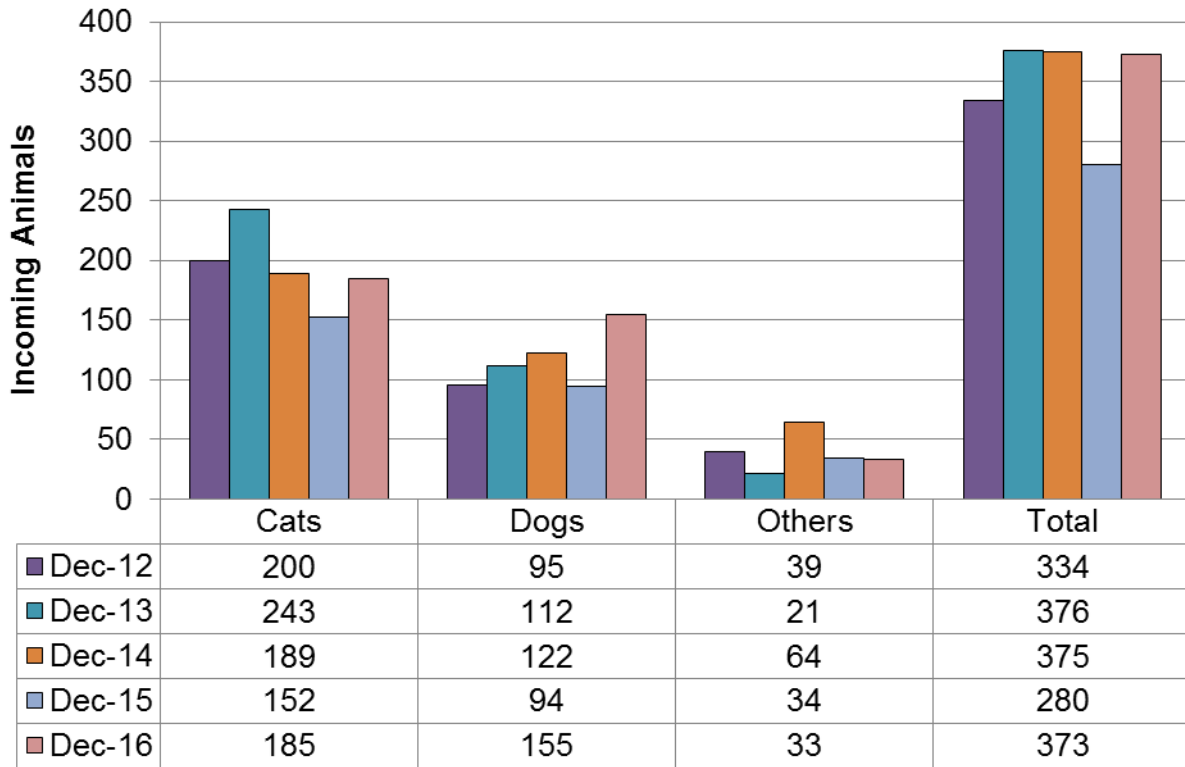
Incoming Transfers December



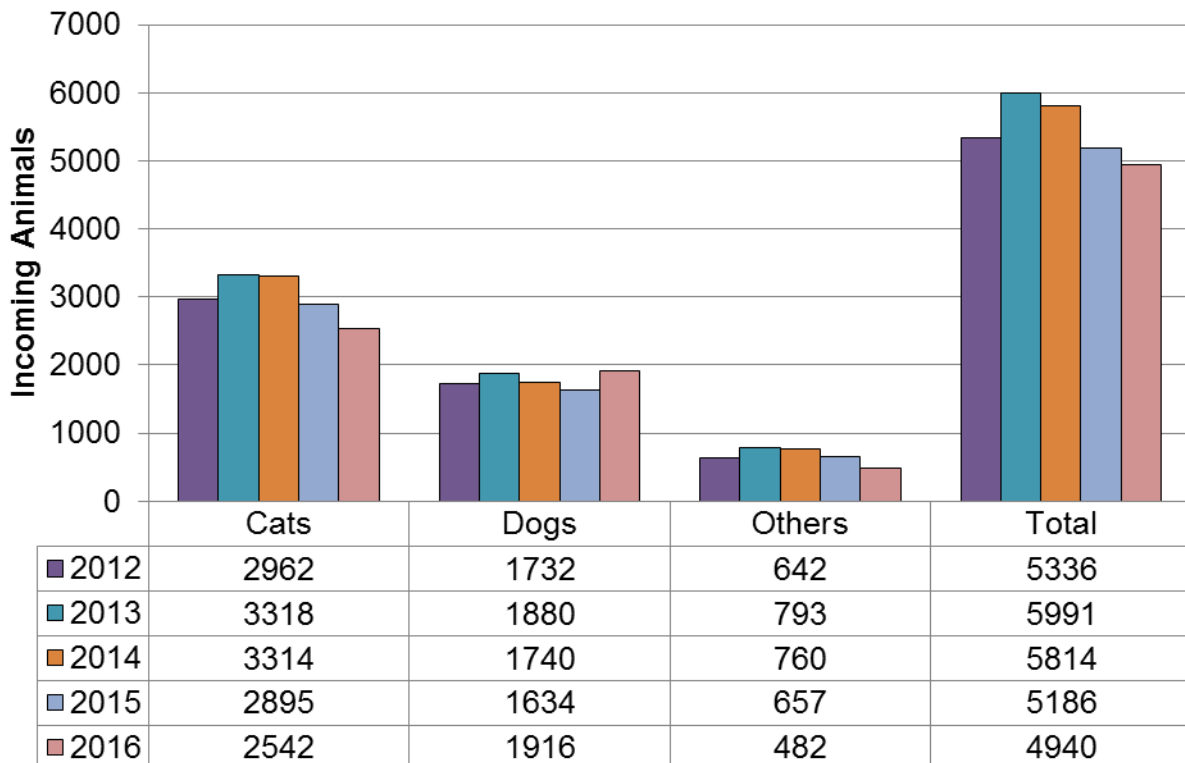
Incoming Transfers Year to Date



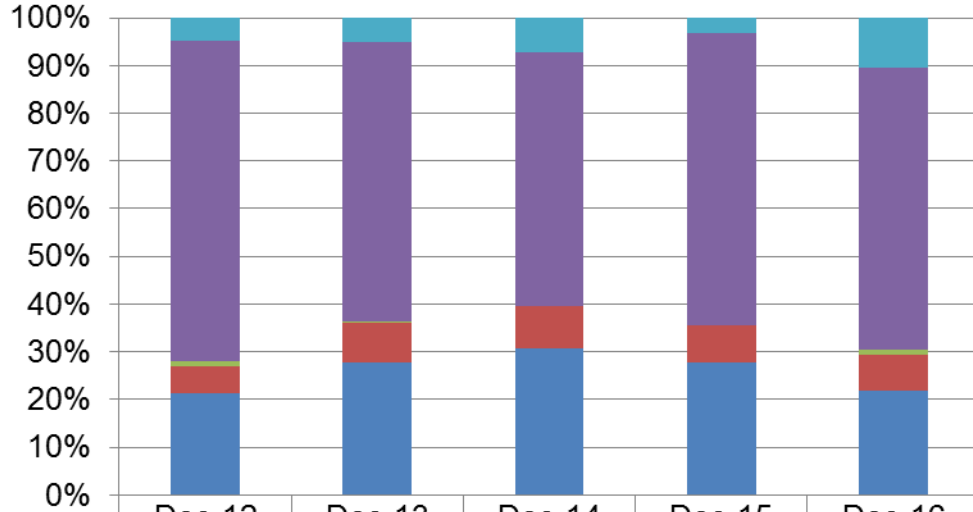
Intake December



Intake Year to Date

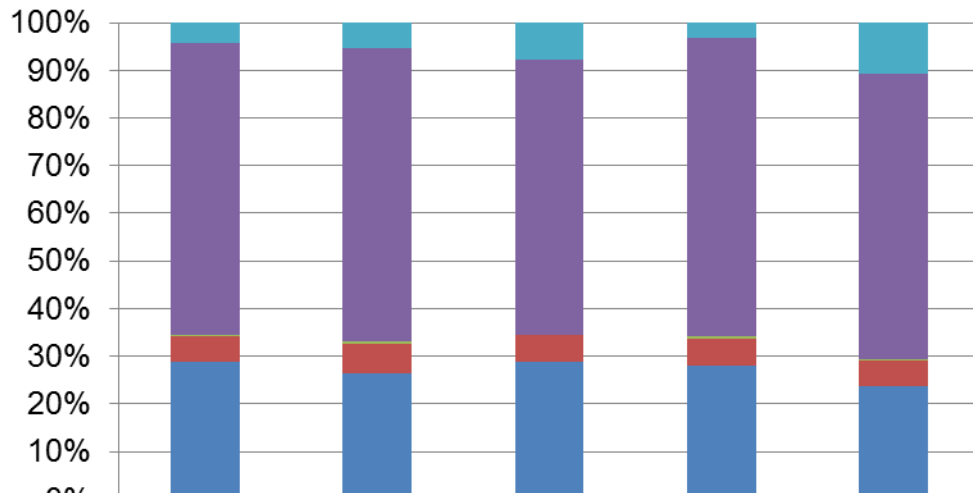


Intakes by Percentage Cats - December



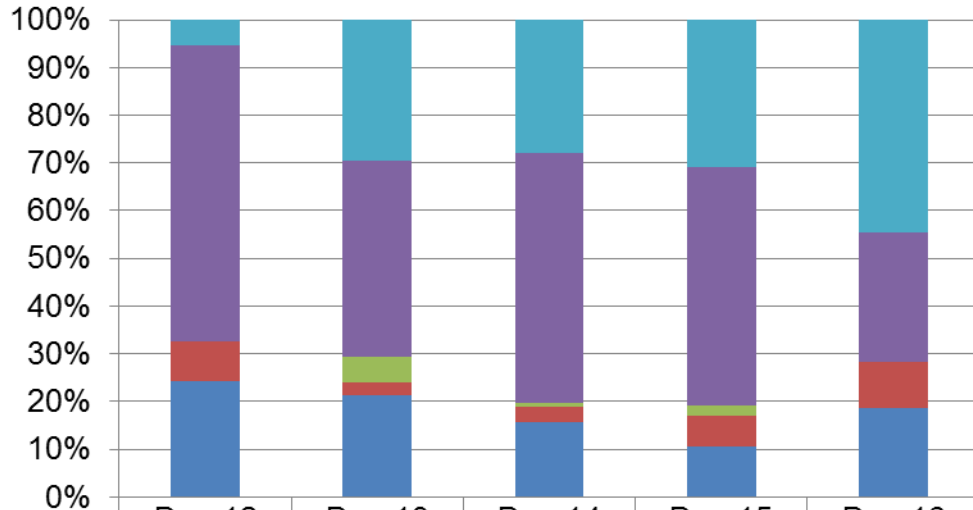
	Dec-12	Dec-13	Dec-14	Dec-15	Dec-16
Incoming Transfers	4.39%	5.42%	7.88%	3.32%	10.66%
Strays	61.21%	61.57%	57.54%	62.52%	59.91%
Seized / Custody	1.00%	0.41%	0.00%	0.00%	1.08%
Returns	5.00%	8.64%	9.52%	7.89%	7.57%
Owner Surrenders	19.50%	29.22%	33.33%	28.29%	22.16%

Intakes by Percentage Cats - Year to Date



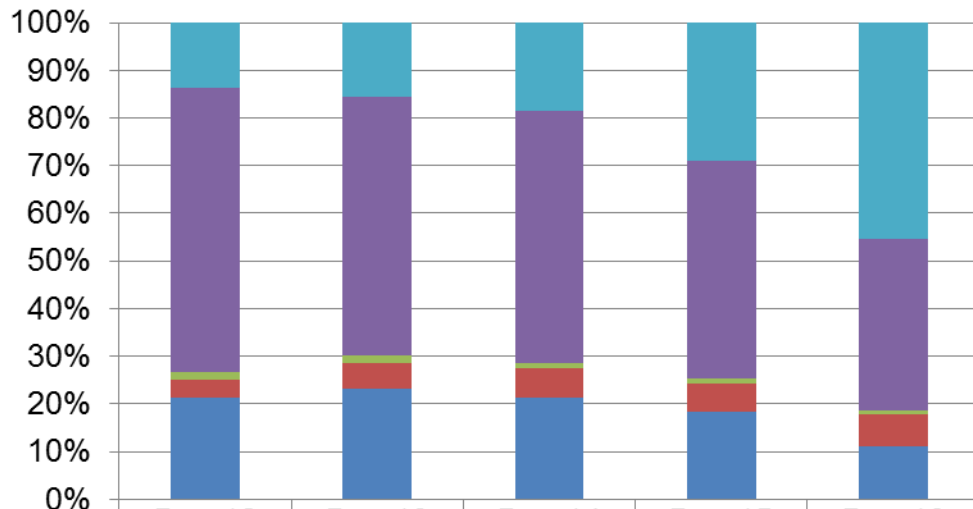
	Dec-12	Dec-13	Dec-14	Dec-15	Dec-16
Incoming Transfers	4.39%	5.42%	7.88%	3.32%	10.66%
Strays	61.21%	61.57%	57.54%	62.52%	59.91%
Seized / Custody	0.30%	0.39%	0.24%	0.48%	0.28%
Returns	5.37%	6.12%	5.64%	5.73%	5.39%
Owner Surrenders	28.73%	26.49%	28.70%	27.94%	23.76%

Intakes by Percentage Dogs - December



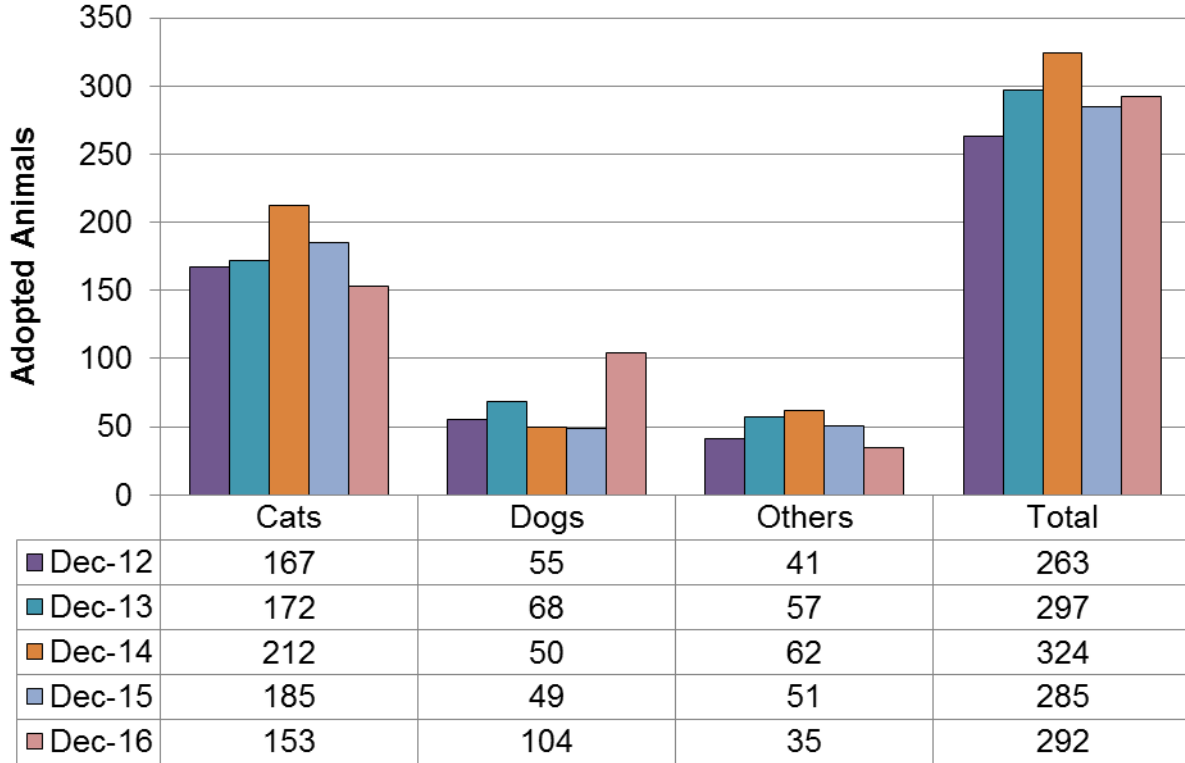
	Dec-12	Dec-13	Dec-14	Dec-15	Dec-16
Incoming Transfers	5.26%	29.46%	27.87%	30.85%	44.52%
Strays	62.11%	41.07%	52.46%	50.00%	27.10%
Seized / Custody	0.00%	5.36%	0.82%	2.13%	0.00%
Returns	8.42%	2.68%	3.28%	6.38%	9.68%
Owner Surrenders	24.21%	21.43%	15.57%	10.64%	18.71%

Intakes by Percentage Dogs - Year to Date

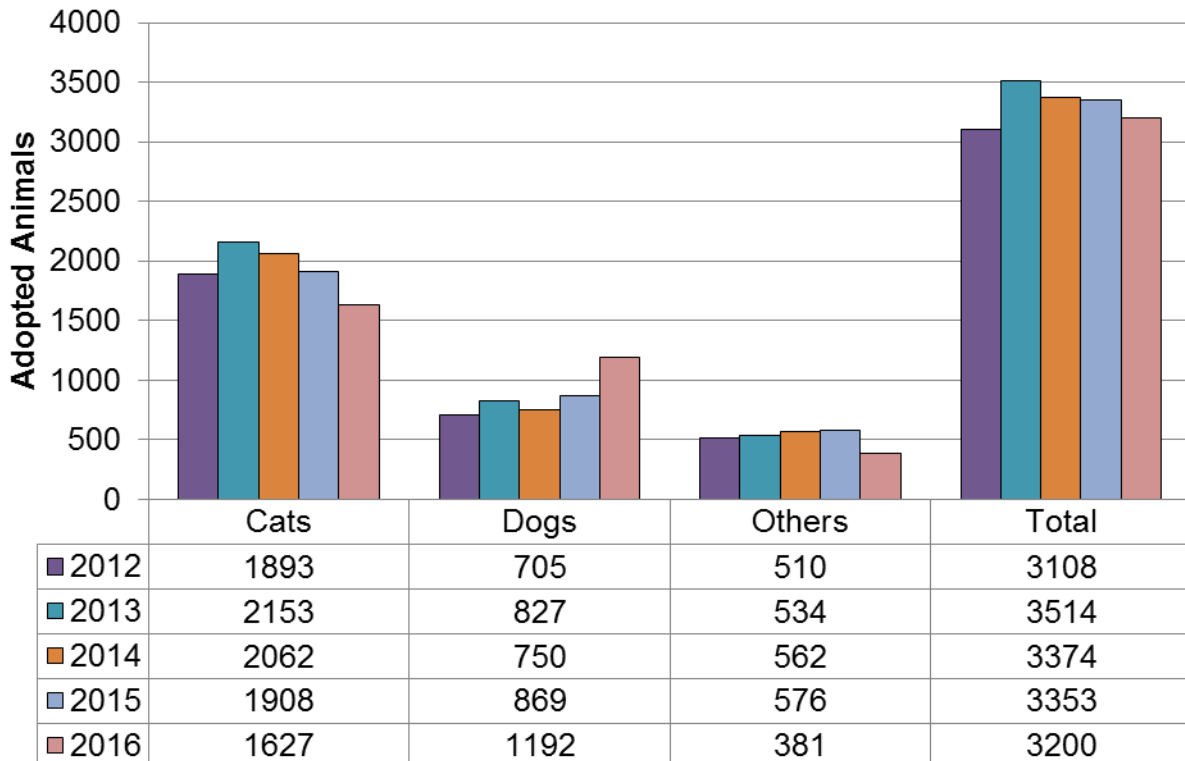


	Dec-12	Dec-13	Dec-14	Dec-15	Dec-16
Incoming Transfers	13.57%	15.48%	18.45%	28.95%	45.46%
Strays	59.64%	54.26%	53.05%	45.65%	35.96%
Seized / Custody	1.62%	1.60%	1.09%	1.16%	0.89%
Returns	3.93%	5.37%	6.09%	6.00%	6.52%
Owner Surrenders	21.25%	23.30%	21.32%	18.24%	11.17%

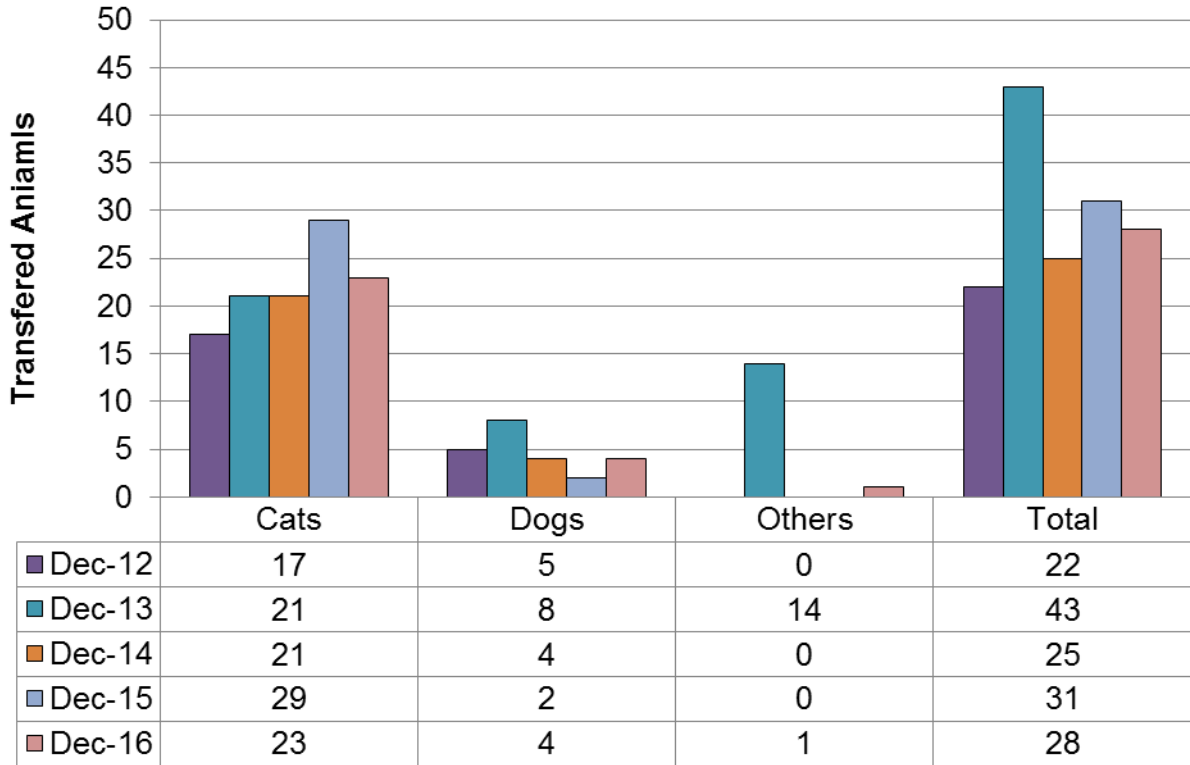
Adoptions December



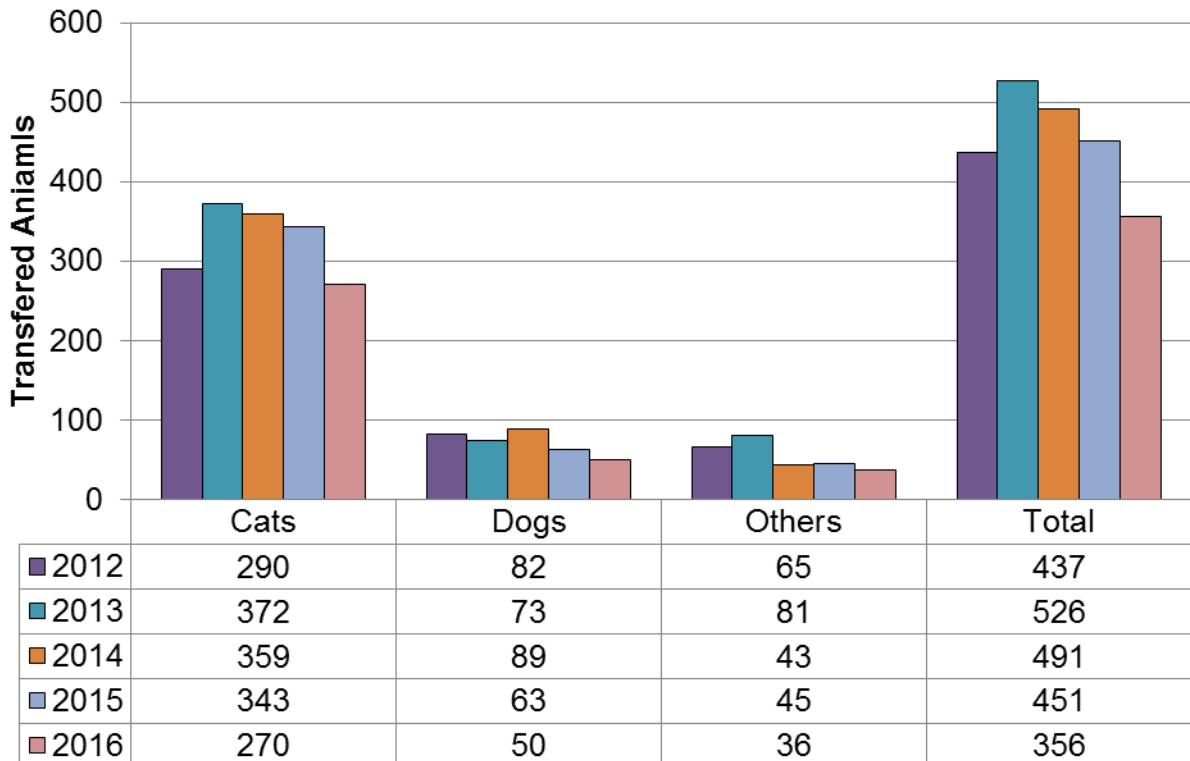
Adoptions Year to Date



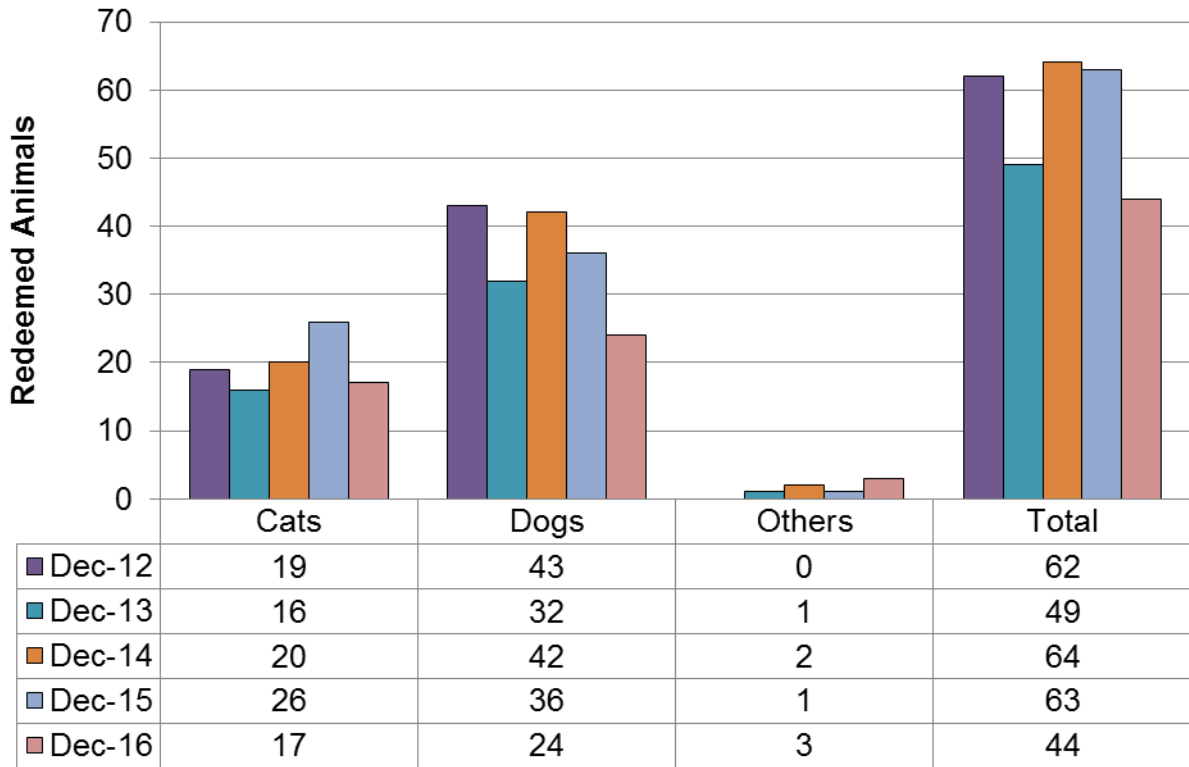
Outgoing Transfers December



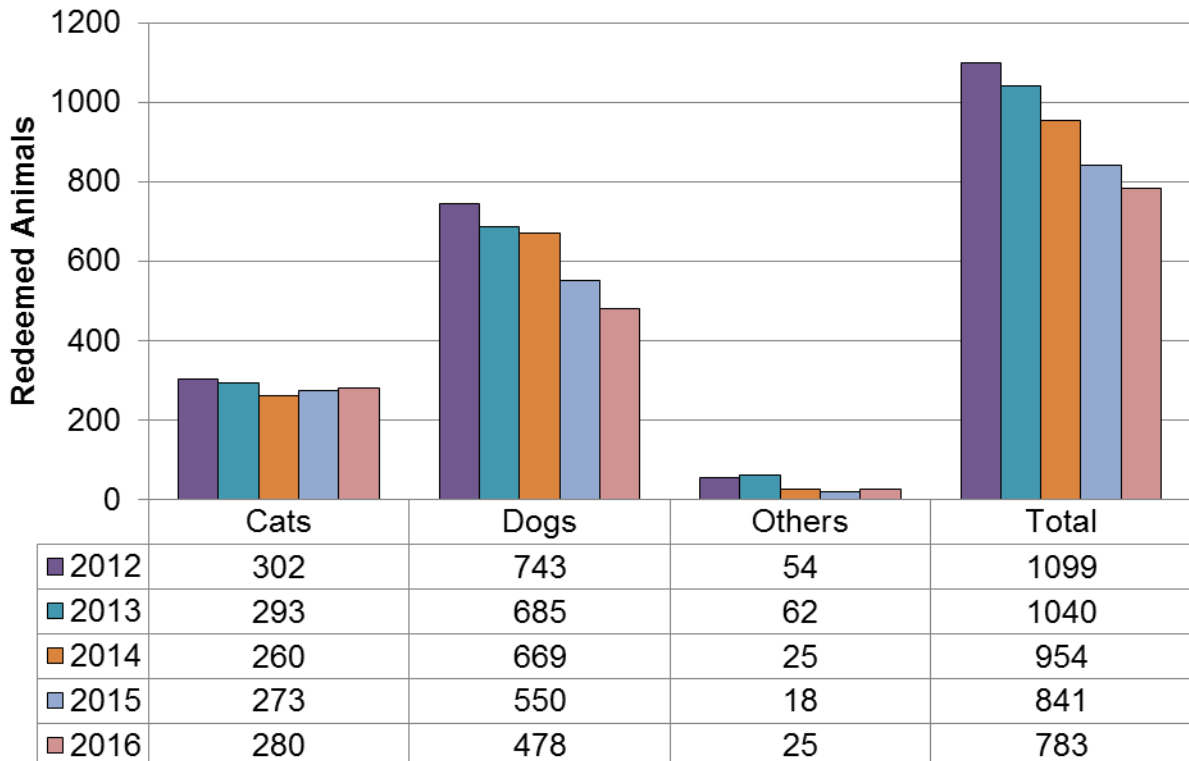
Outgoing Transfers Year to Date



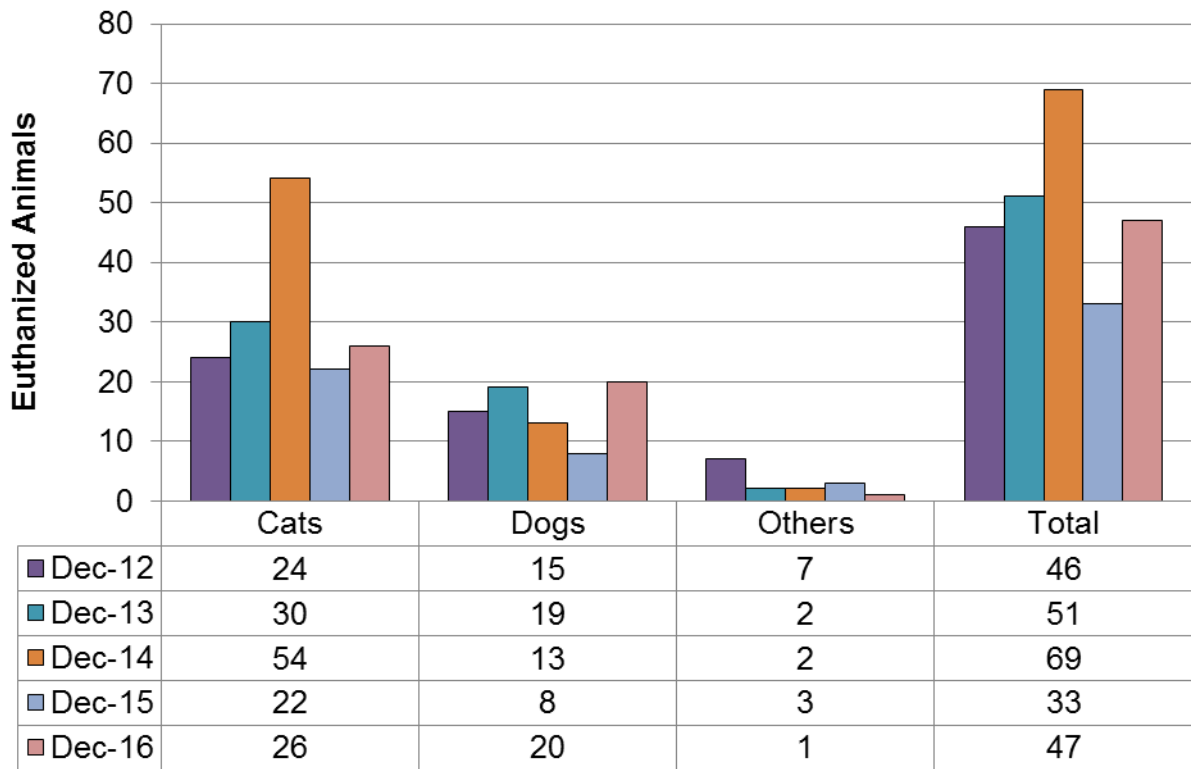
Redemptions December



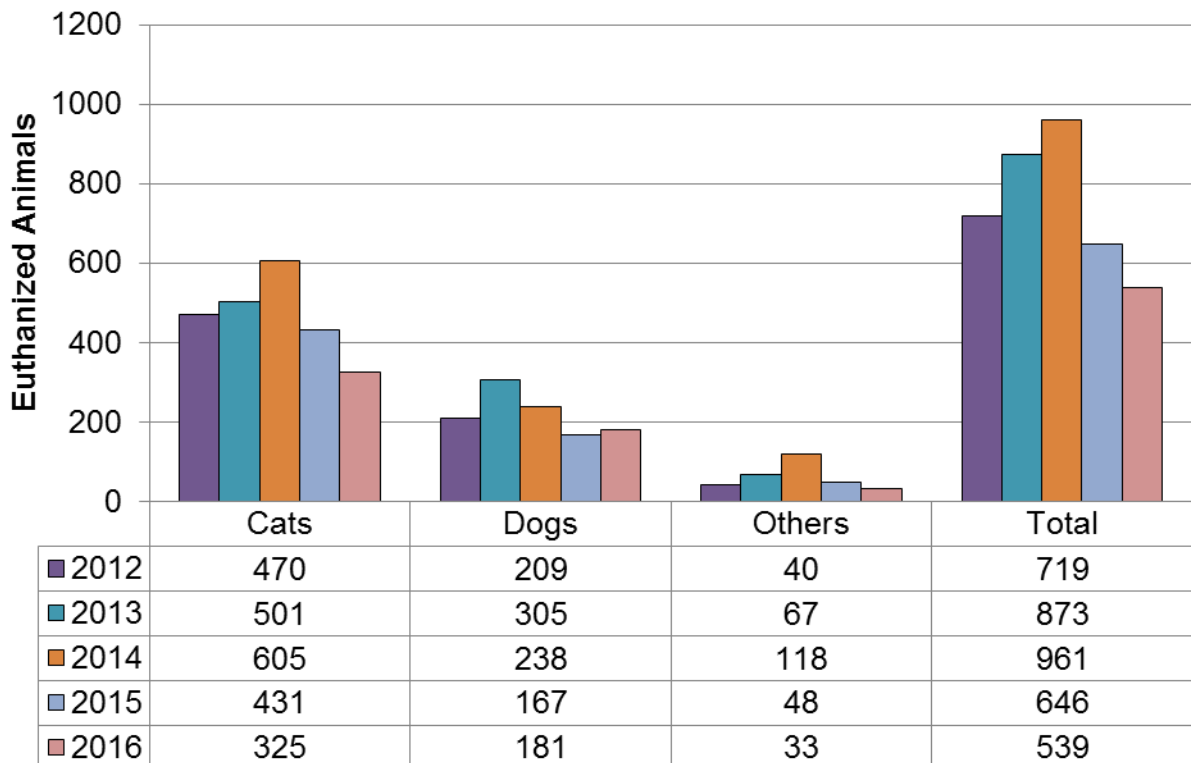
Redemptions Year to Date



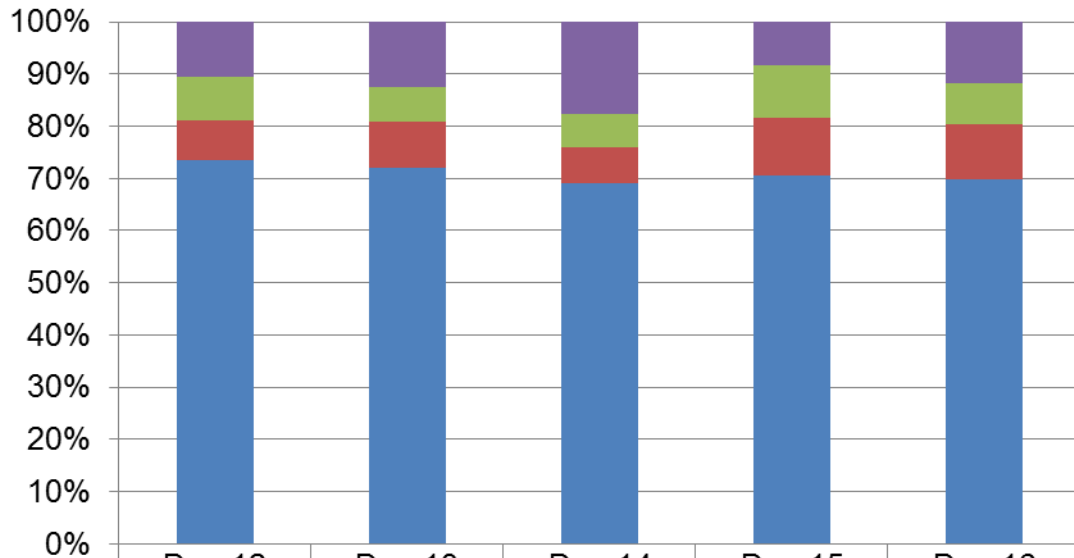
Euthanasia December



Euthanasia Year to Date

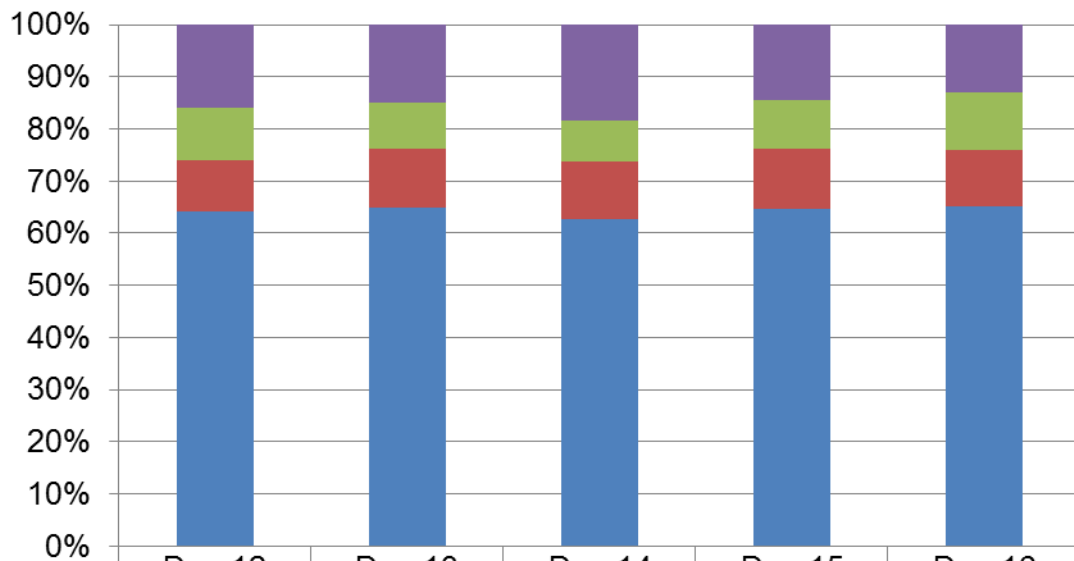


Outcomes by Percentage Cats - December



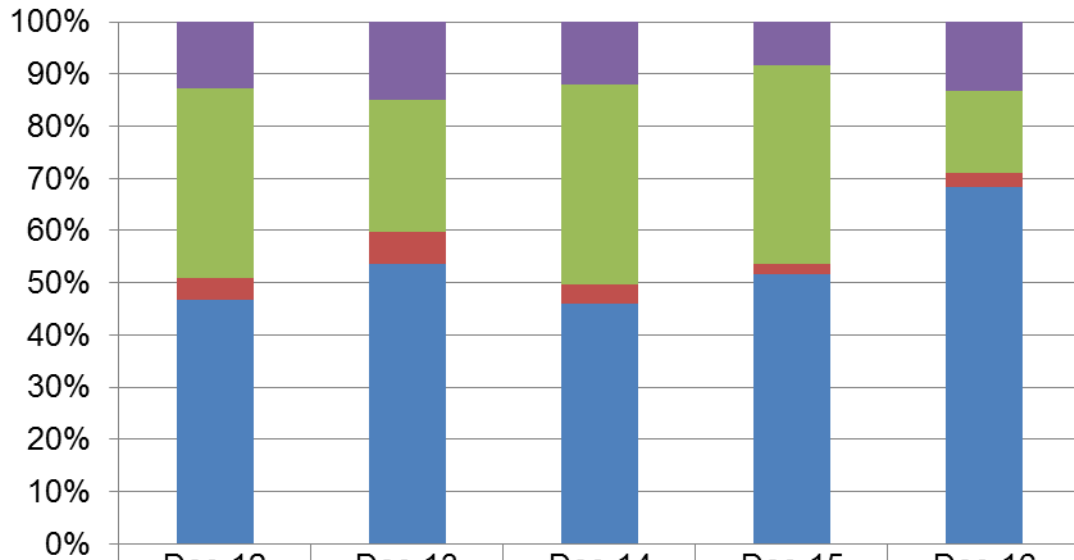
	Dec-12	Dec-13	Dec-14	Dec-15	Dec-16
■ Euthanasia	10.57%	12.55%	17.59%	8.40%	11.87%
■ Redemption	8.37%	6.69%	6.51%	9.92%	7.76%
■ Transfer	7.49%	8.79%	6.84%	11.07%	10.50%
■ Adoption	73.57%	71.97%	69.06%	70.61%	69.86%

Outcomes by Percentage Cats - Year to Date



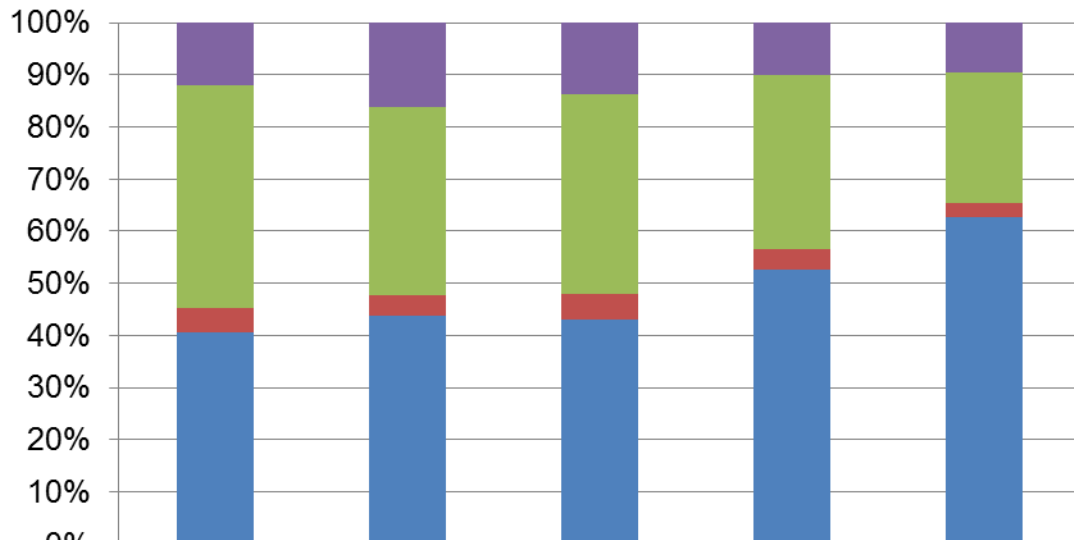
	Dec-12	Dec-13	Dec-14	Dec-15	Dec-16
■ Euthanasia	15.91%	15.09%	18.41%	14.59%	12.99%
■ Redemption	10.22%	8.83%	7.91%	9.24%	11.19%
■ Transfer	9.81%	11.21%	10.93%	11.61%	10.79%
■ Adoption	64.06%	64.87%	62.75%	64.57%	65.03%

Outcomes by Percentage Dogs - December



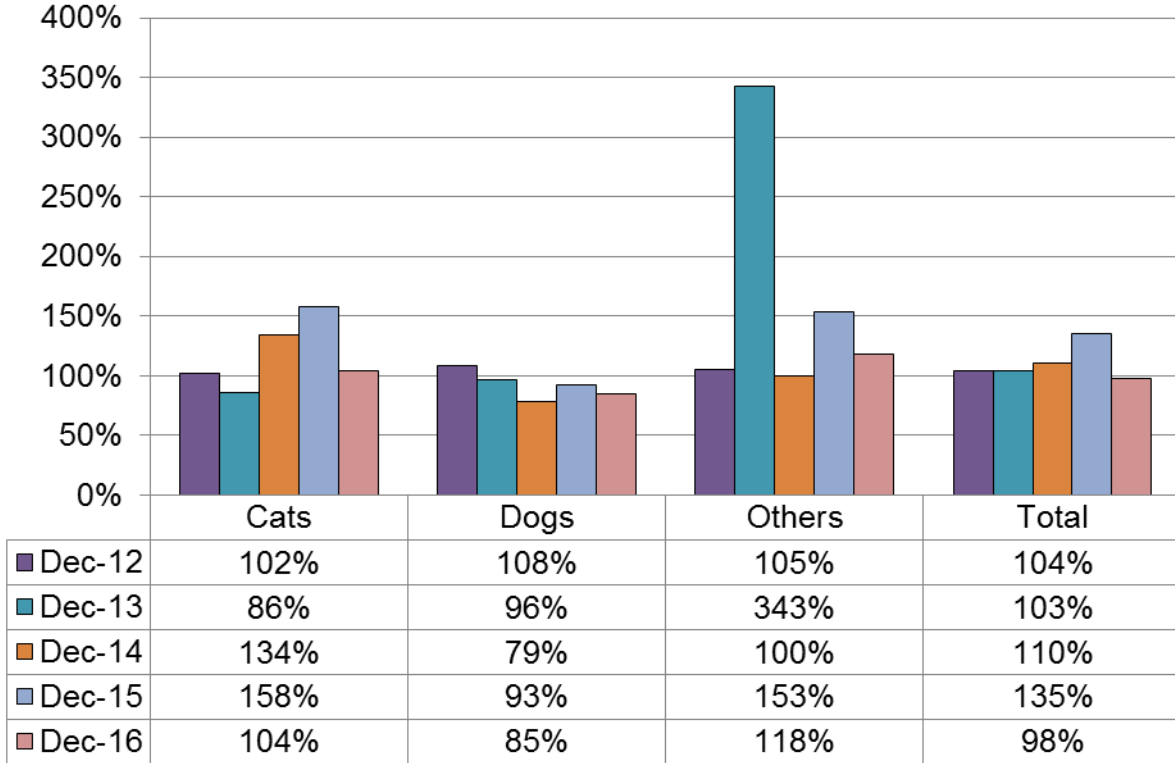
	Dec-12	Dec-13	Dec-14	Dec-15	Dec-16
Euthanasia	12.71%	14.96%	11.93%	8.42%	13.16%
Redemption	36.44%	25.20%	38.53%	37.89%	15.79%
Transfer	4.24%	6.30%	3.67%	2.11%	2.63%
Adoption	46.61%	53.54%	45.87%	51.58%	68.42%

Outcomes by Percentage Dogs - Year to Date

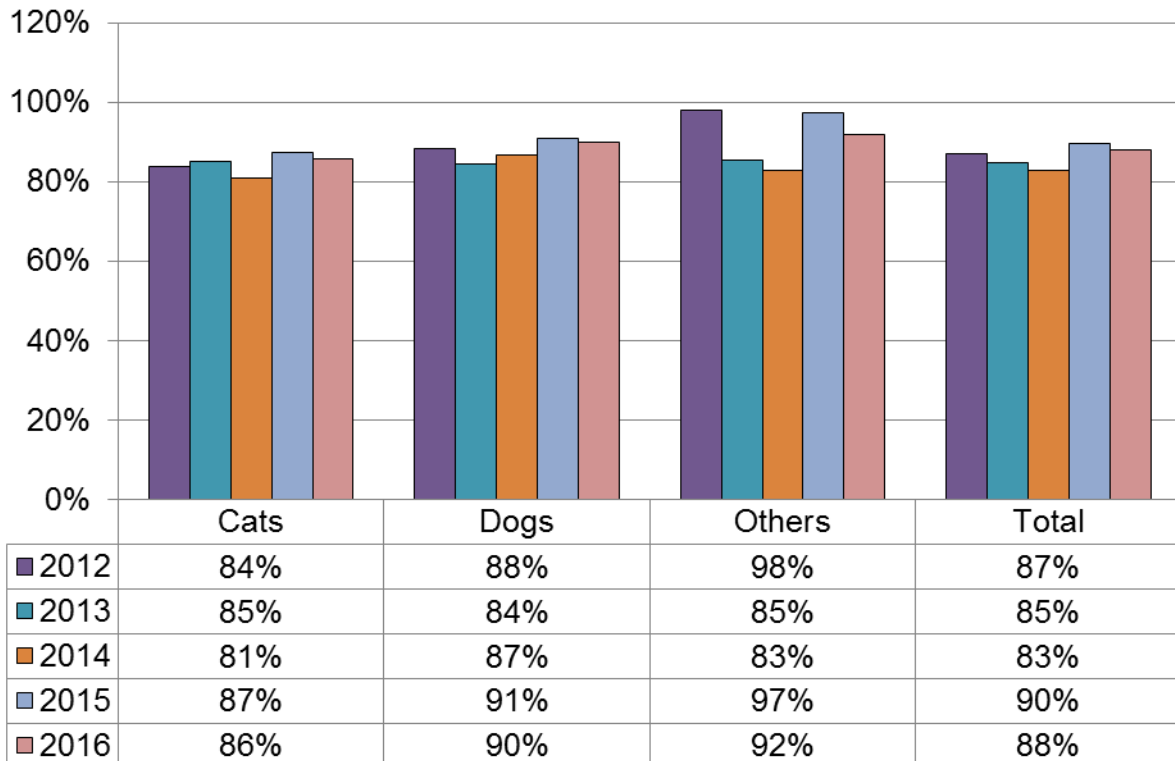


	Dec-12	Dec-13	Dec-14	Dec-15	Dec-16
Euthanasia	12.02%	16.14%	13.63%	10.13%	9.52%
Redemption	42.73%	36.24%	38.32%	33.35%	25.14%
Transfer	4.72%	3.86%	5.10%	3.82%	2.63%
Adoption	40.54%	43.76%	42.96%	52.70%	62.70%

Save Rate December



Save Rate Year to Date



Terms and Definitions:

Adoption – The placement of an animal with a new owner/family.

Euthanasia – The act of putting an animal to death painlessly.

Euthanasia Rate – The percentage of animals euthanized during a given time period. For statistical purposes, this number does not include animals admitted specifically for euthanasia.

$$\text{Euthanasia Rate} = \text{Euthanasia} / (\text{Intake} + \text{Inventory})$$

Intake – The number of live animals admitted. For statistical purposes, this number does not include animals admitted specifically for euthanasia.

Live Release Rate – The percentage of live animals released by means of adoption, redemption and transfer during a given time period. The difference between Live Release Rate and Save Rate (see Save Rate) is that Live Release Rate takes into account the starting animal inventory for the given time period. This results in a more accurate reflection of live release versus population. DCHS started using Live Release Rate in 2008.

$$\text{Live Release Rate} = (\text{Adoptions} + \text{Redemptions} + \text{Transfers}) / (\text{Intake} + \text{Inventory})$$

Redemption – The reclaiming of an animal by an existing or previous owner.

Rolling Release Rate – A compilation of Live Release Rate, Euthanasia Rate and Sanctuary Rate.

Sanctuary Rate – The percentage of animals remaining in the shelter's care at the end of a given time period.

$$\text{Sanctuary Rate} = ((\text{Inventory} + \text{Intake}) - (\text{Adoptions} + \text{Redemptions} + \text{Transfers} + \text{Euthanasia})) / (\text{Intake} + \text{Inventory})$$

Save Rate – The percentage of live animals released by means of adoption, redemption and transfer during a given time period. Save Rate is an older and previously widely used formula for calculating a shelter's success but does not include the starting animal inventory for the given time period. This results in a less accurate reflection of live release versus population and could even generate percentages above 100% (for example if during a given time period 10 animals were adopted but only 5 were admitted, the Save Rate would equal 200% because the existing inventory of 5+ animals are not taken into consideration). Save Rate is still commonly used by shelters and is still calculated at DCHS for the purpose of comparisons to other shelter that still use Save Rate and for comparison to past years before Live Release Rate started to be calculated in 2008.

$$\text{Save Rate} = (\text{Adoption} + \text{Redemptions} + \text{Transfers}) / \text{Intake}$$

Transfer – The placement of an animal with another animal welfare organization.