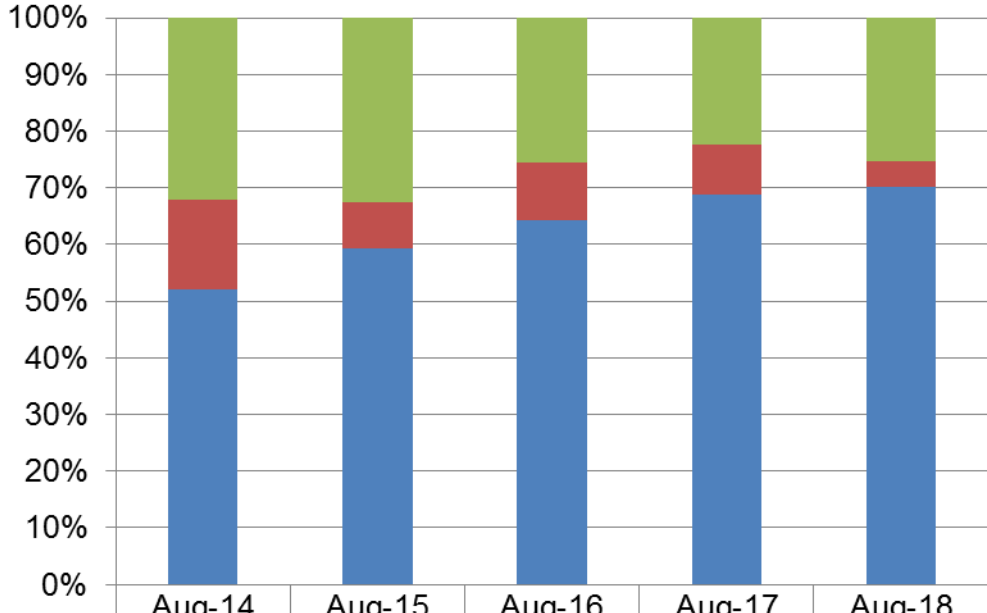


Dane County Humane Society  
Rolling Release Rate  
&  
Save Rate  
Overview

August 2018

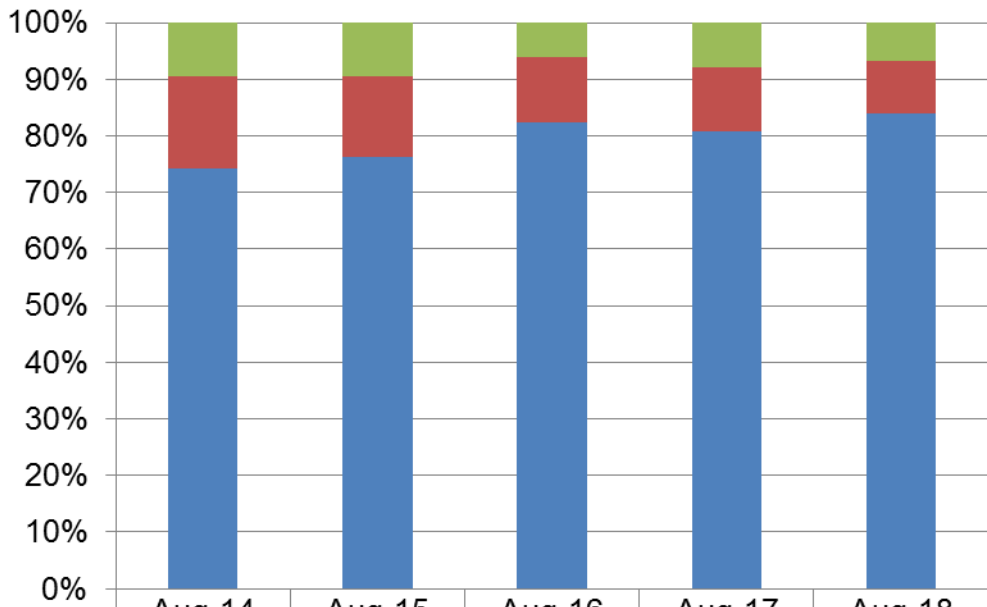
Report prepared by:  
Doug Brown  
Assistant Executive Director  
Dane County Humane Society

### Cat Rolling Release Rate August



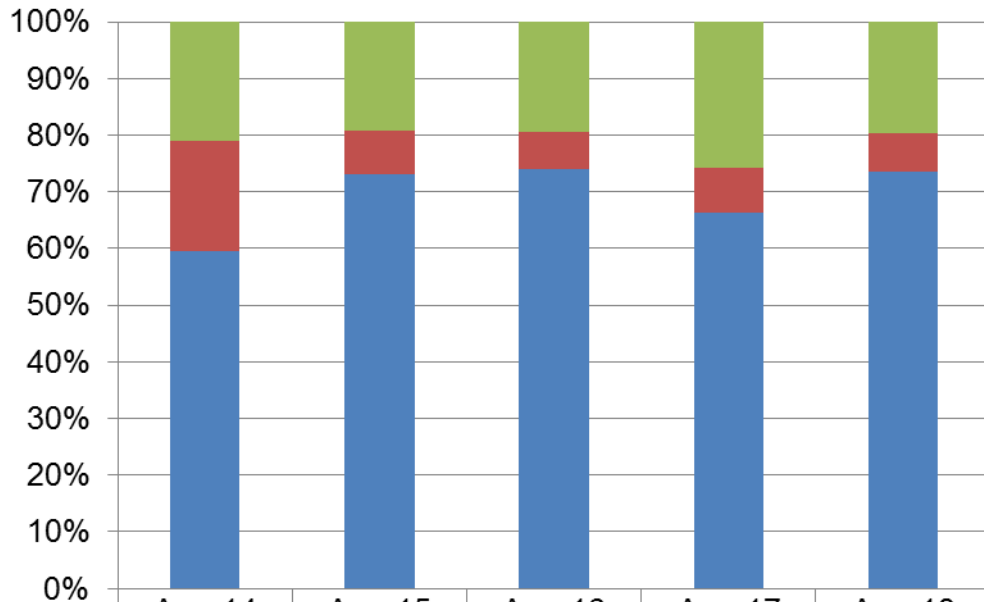
|                   | Aug-14 | Aug-15 | Aug-16 | Aug-17 | Aug-18 |
|-------------------|--------|--------|--------|--------|--------|
| Sanctuary Rate    | 32.17% | 32.51% | 25.51% | 22.31% | 25.24% |
| Euthanasia Rate   | 15.83% | 8.30%  | 10.20% | 8.92%  | 4.52%  |
| Live Release Rate | 52.00% | 59.19% | 64.29% | 68.77% | 70.24% |

### Cat Rolling Release Rate Year to Date



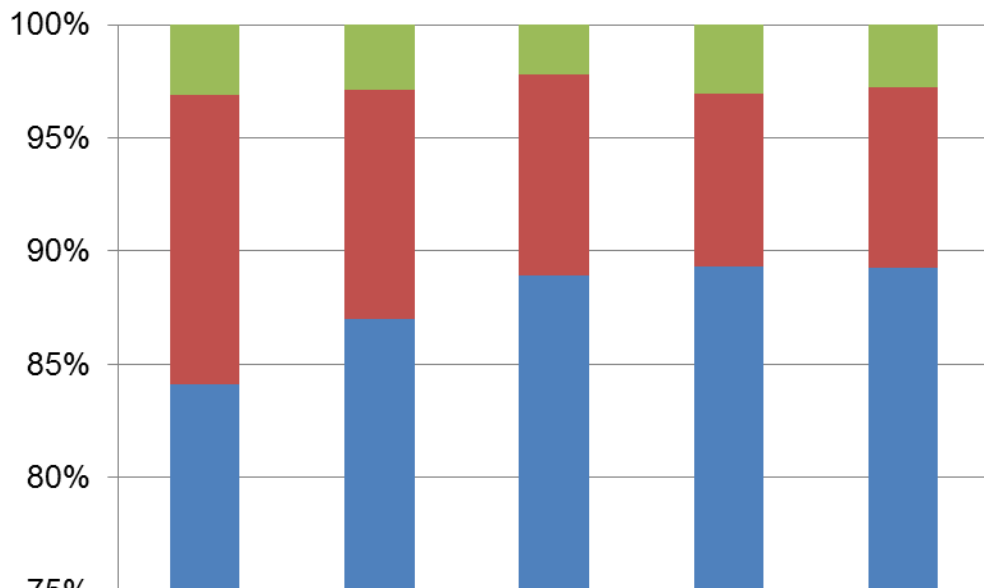
|                   | Aug-14 | Aug-15 | Aug-16 | Aug-17 | Aug-18 |
|-------------------|--------|--------|--------|--------|--------|
| Sanctuary Rate    | 9.49%  | 9.49%  | 6.09%  | 7.82%  | 6.81%  |
| Euthanasia Rate   | 16.34% | 14.29% | 11.47% | 11.48% | 9.33%  |
| Live Release Rate | 74.17% | 76.22% | 82.44% | 80.71% | 83.86% |

### Dog Rolling Release Rate August



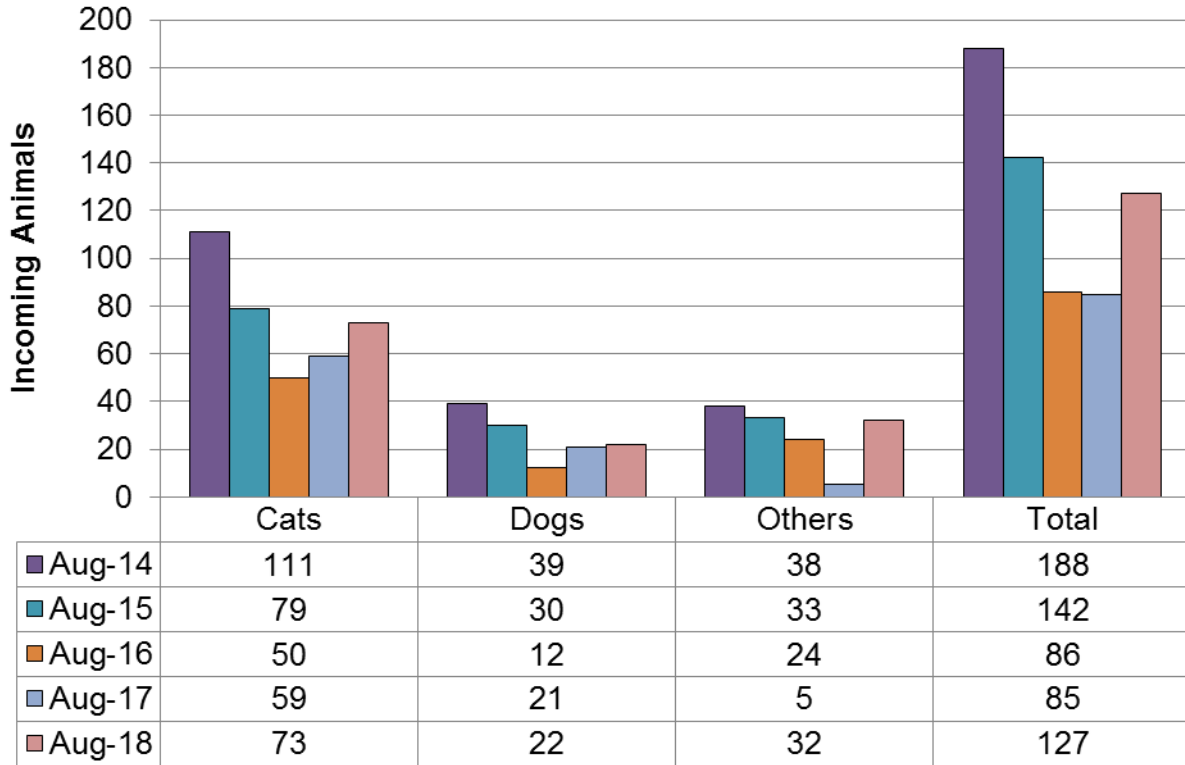
|                   | Aug-14 | Aug-15 | Aug-16 | Aug-17 | Aug-18 |
|-------------------|--------|--------|--------|--------|--------|
| Sanctuary Rate    | 20.98% | 19.23% | 19.39% | 25.69% | 19.68% |
| Euthanasia Rate   | 19.51% | 7.69%  | 6.67%  | 7.91%  | 6.83%  |
| Live Release Rate | 59.51% | 73.08% | 73.94% | 66.40% | 73.49% |

### Dog Rolling Release Rate Year to Date

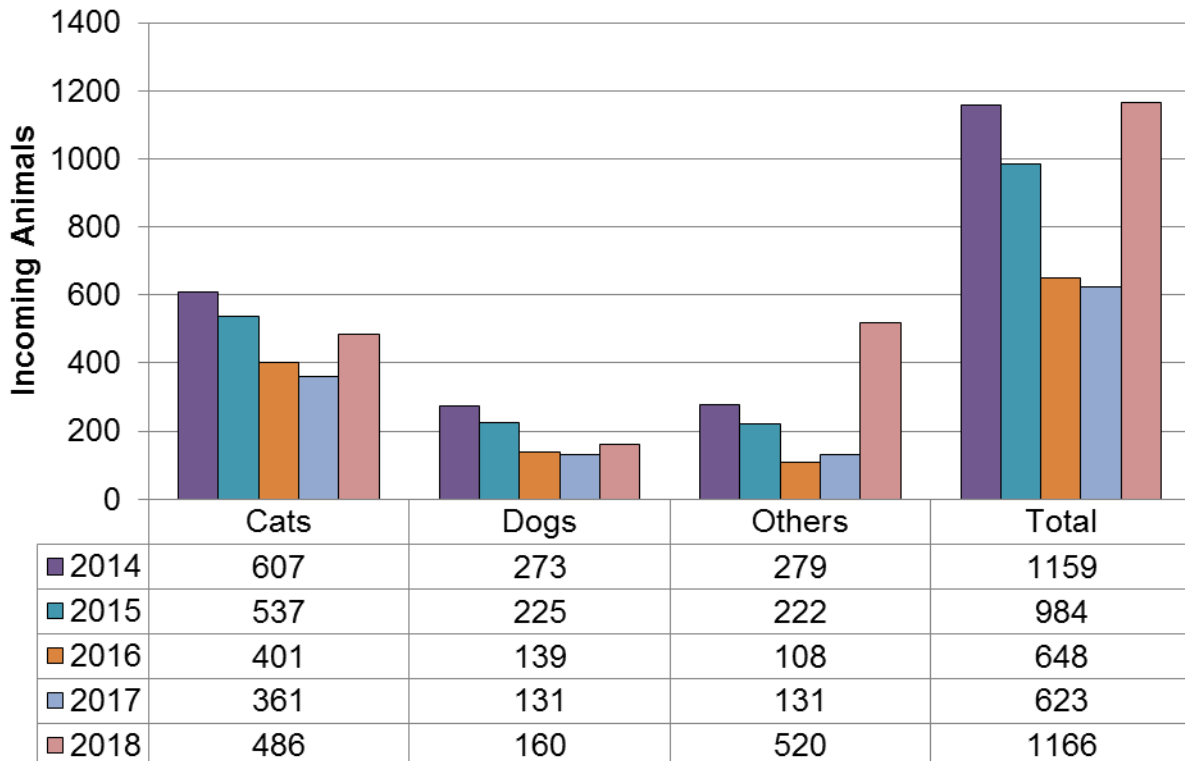


|                   | Aug-14 | Aug-15 | Aug-16 | Aug-17 | Aug-18 |
|-------------------|--------|--------|--------|--------|--------|
| Sanctuary Rate    | 3.11%  | 2.87%  | 2.22%  | 3.05%  | 2.77%  |
| Euthanasia Rate   | 12.76% | 10.13% | 8.88%  | 7.66%  | 7.97%  |
| Live Release Rate | 84.13% | 87.00% | 88.90% | 89.30% | 89.26% |

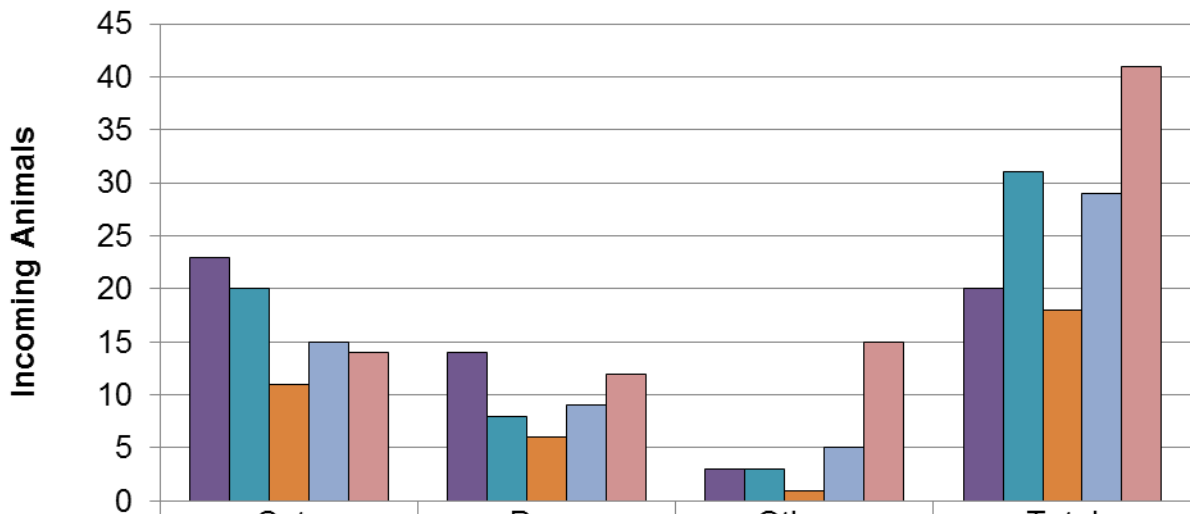
### Surrenders August



### Surrenders Year to Date

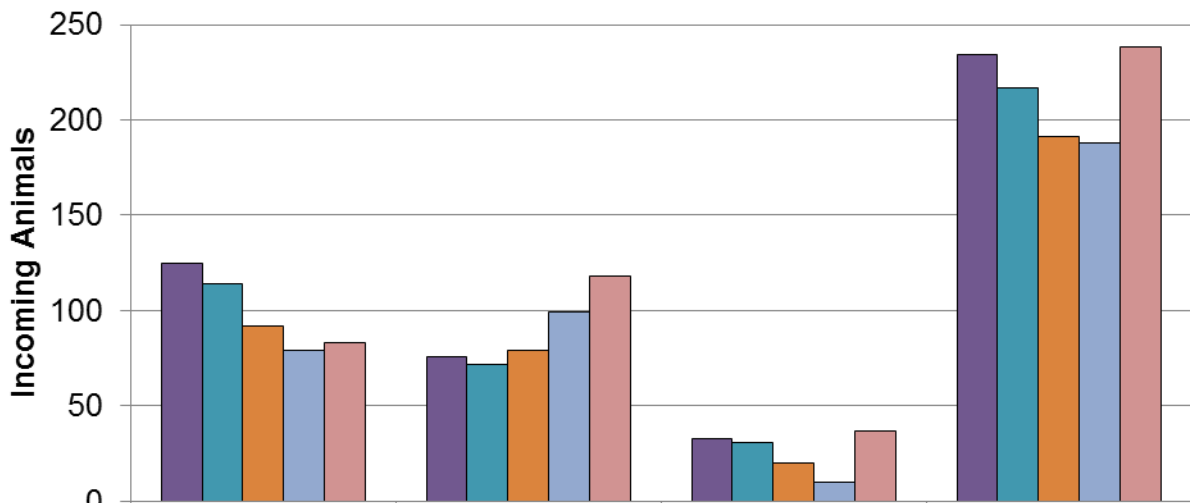


### Returns August



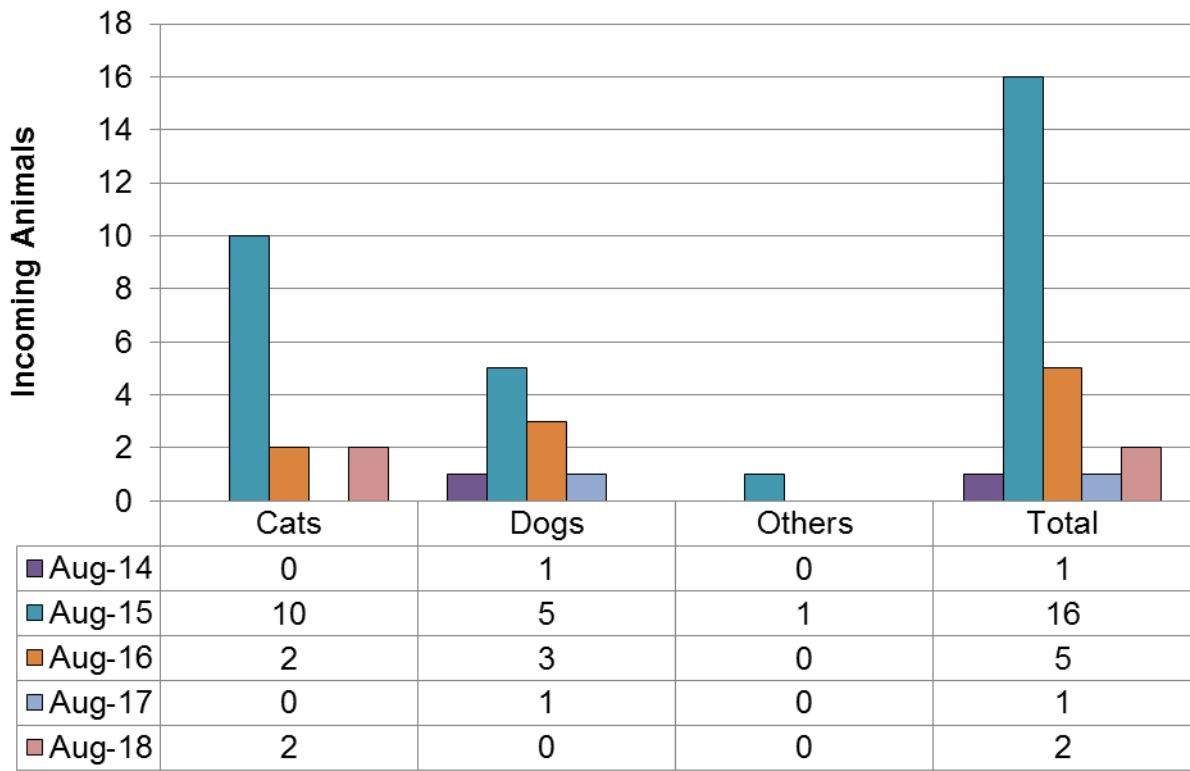
|        | Cats | Dogs | Others | Total |
|--------|------|------|--------|-------|
| Aug-14 | 23   | 14   | 3      | 20    |
| Aug-15 | 20   | 8    | 3      | 31    |
| Aug-16 | 11   | 6    | 1      | 18    |
| Aug-17 | 15   | 9    | 5      | 29    |
| Aug-18 | 14   | 12   | 15     | 41    |

### Returns Year to Date

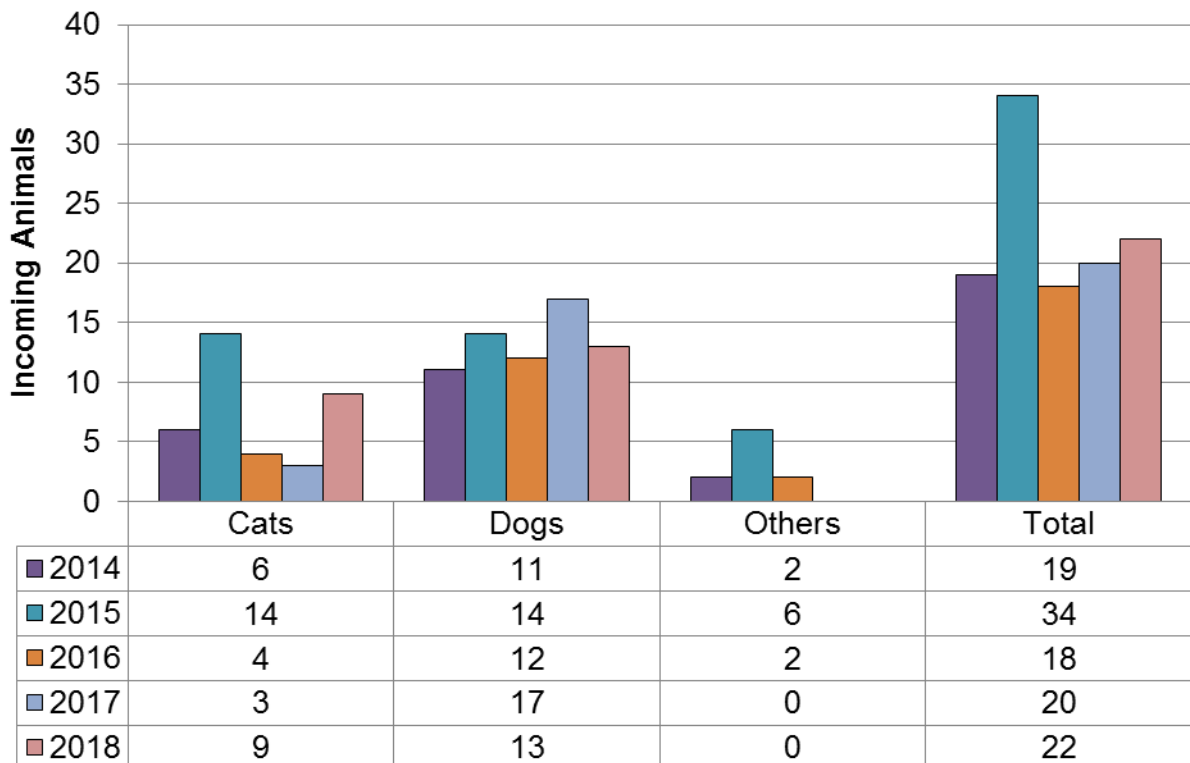


|      | Cats | Dogs | Others | Total |
|------|------|------|--------|-------|
| 2014 | 125  | 76   | 33     | 234   |
| 2015 | 114  | 72   | 31     | 217   |
| 2016 | 92   | 79   | 20     | 191   |
| 2017 | 79   | 99   | 10     | 188   |
| 2018 | 83   | 118  | 37     | 238   |

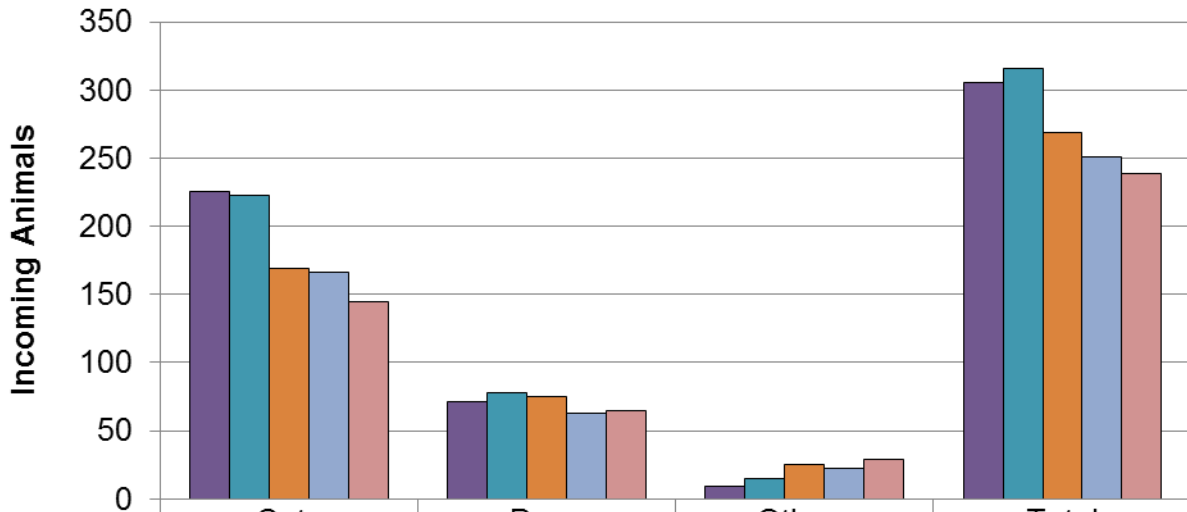
### Seized / Custody August



### Seized / Custody Year to Date

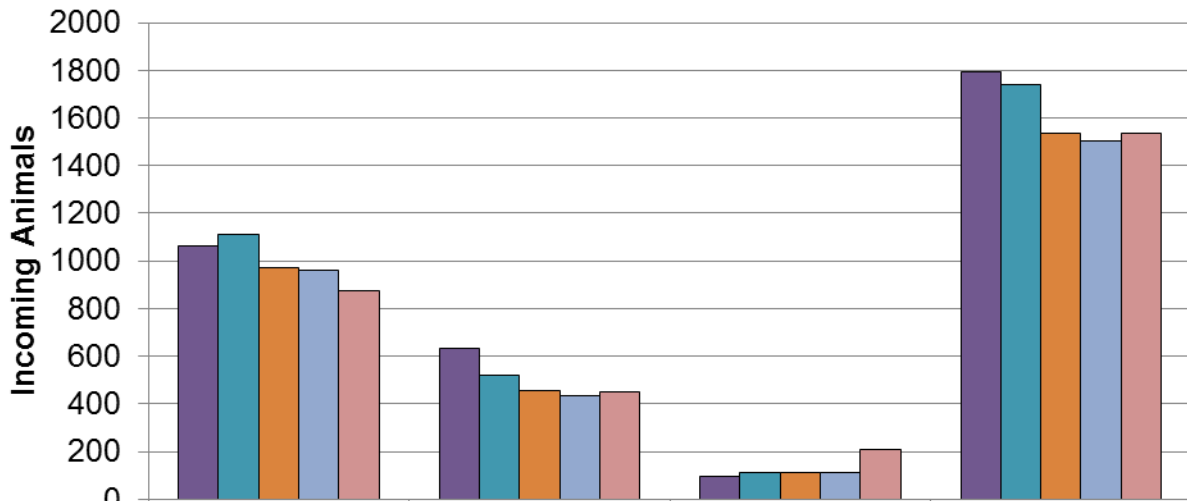


### Stray August



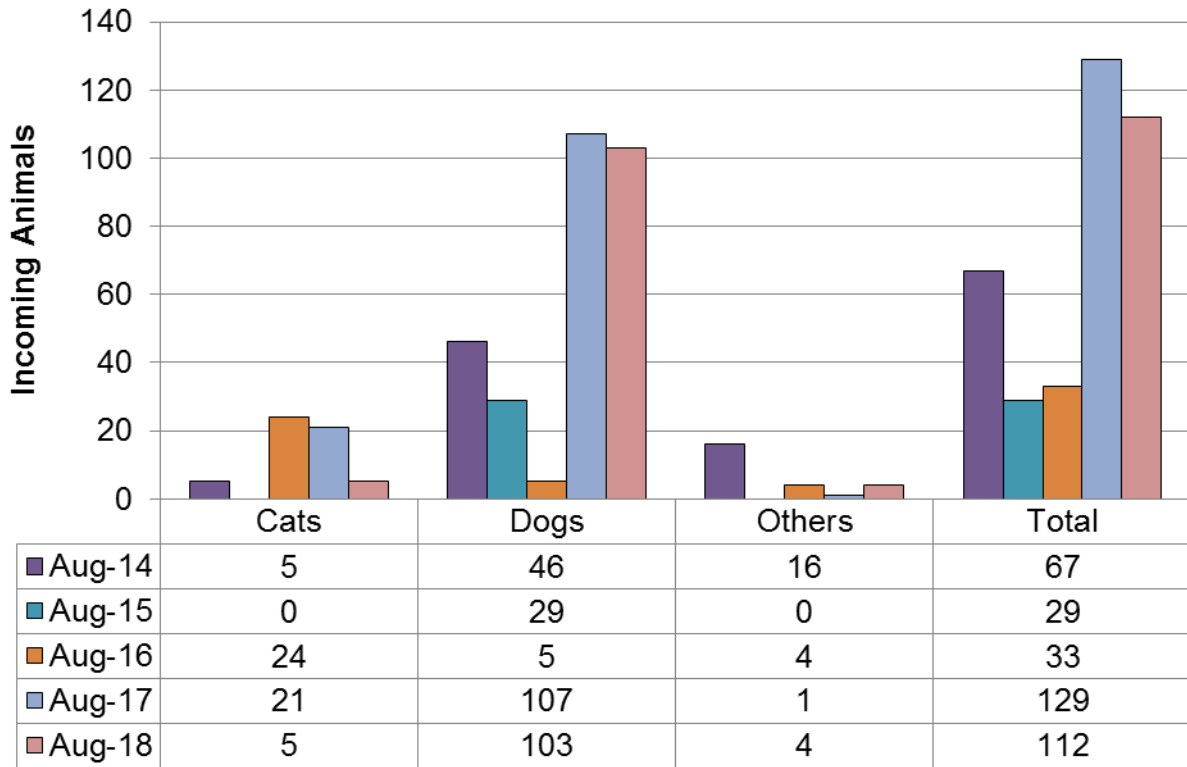
|        | Cats | Dogs | Others | Total |
|--------|------|------|--------|-------|
| Aug-14 | 225  | 71   | 9      | 305   |
| Aug-15 | 223  | 78   | 15     | 316   |
| Aug-16 | 169  | 75   | 25     | 269   |
| Aug-17 | 166  | 63   | 22     | 251   |
| Aug-18 | 145  | 65   | 29     | 239   |

### Stray Year to Date

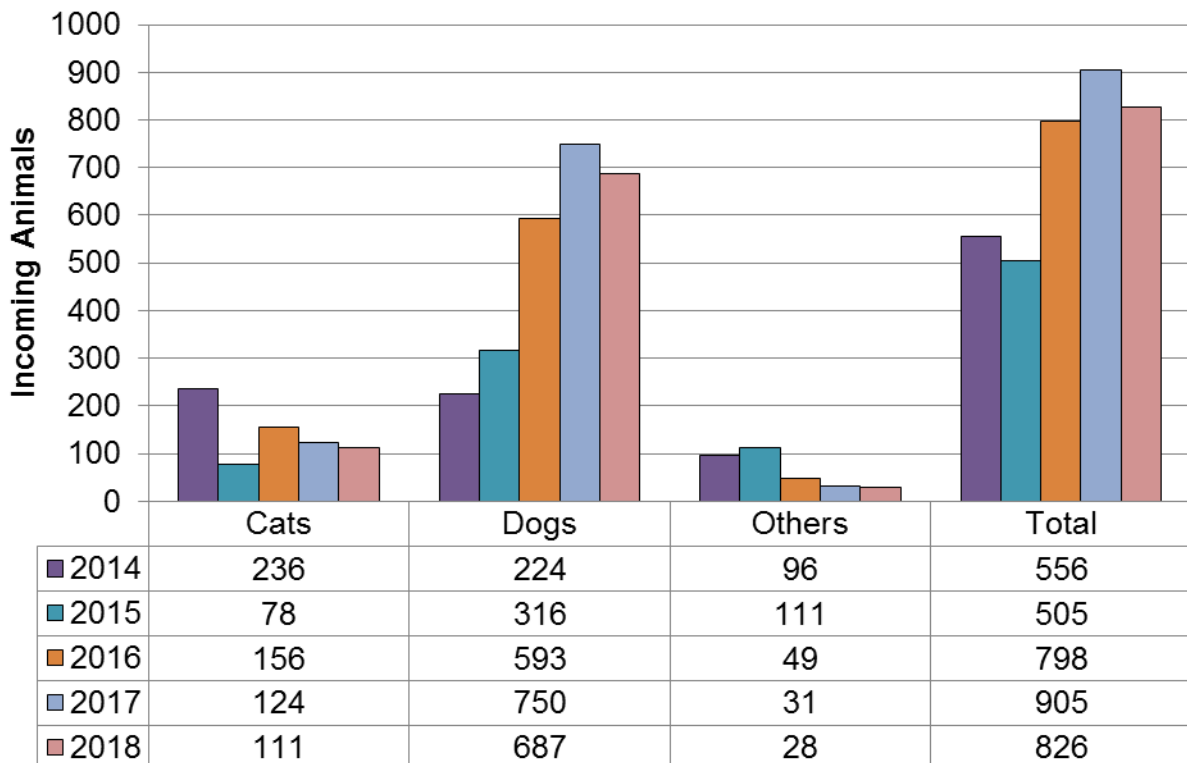


|      | Cats | Dogs | Others | Total |
|------|------|------|--------|-------|
| 2014 | 1061 | 635  | 98     | 1794  |
| 2015 | 1112 | 519  | 110    | 1741  |
| 2016 | 970  | 454  | 113    | 1537  |
| 2017 | 960  | 432  | 109    | 1501  |
| 2018 | 877  | 449  | 211    | 1537  |

### Incoming Transfers August

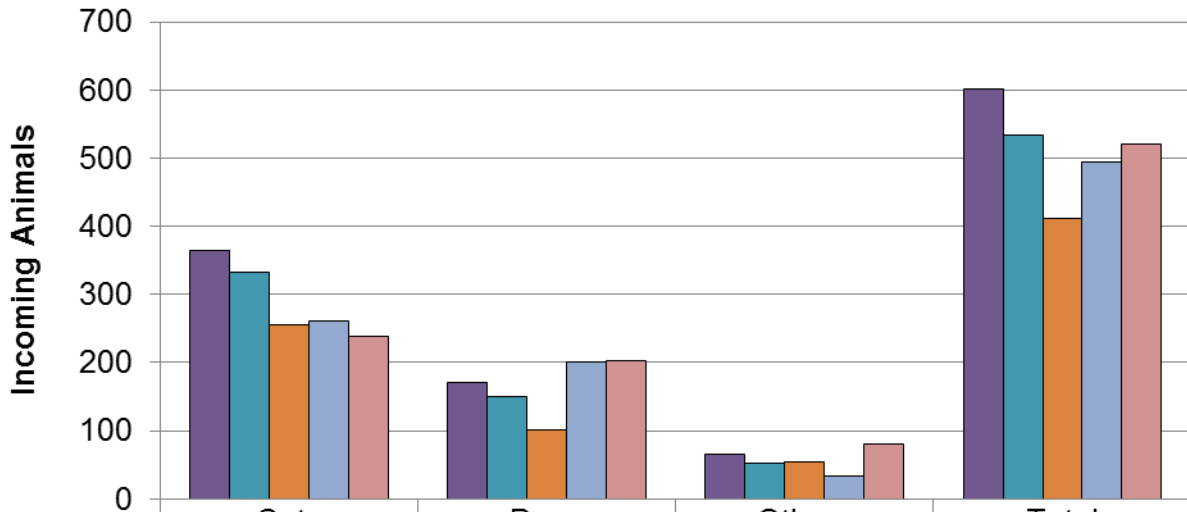


### Incoming Transfers Year to Date



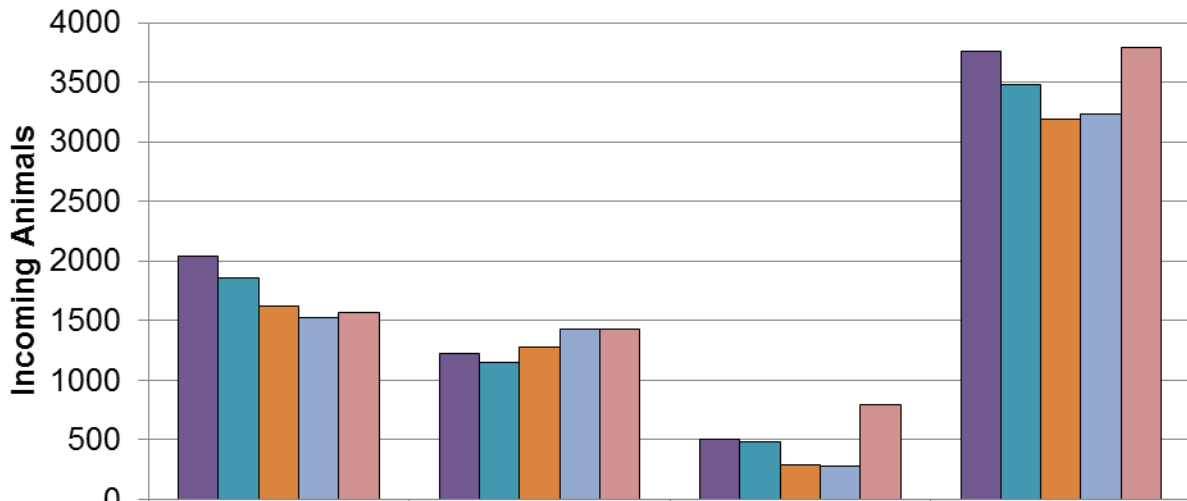


### Intake August



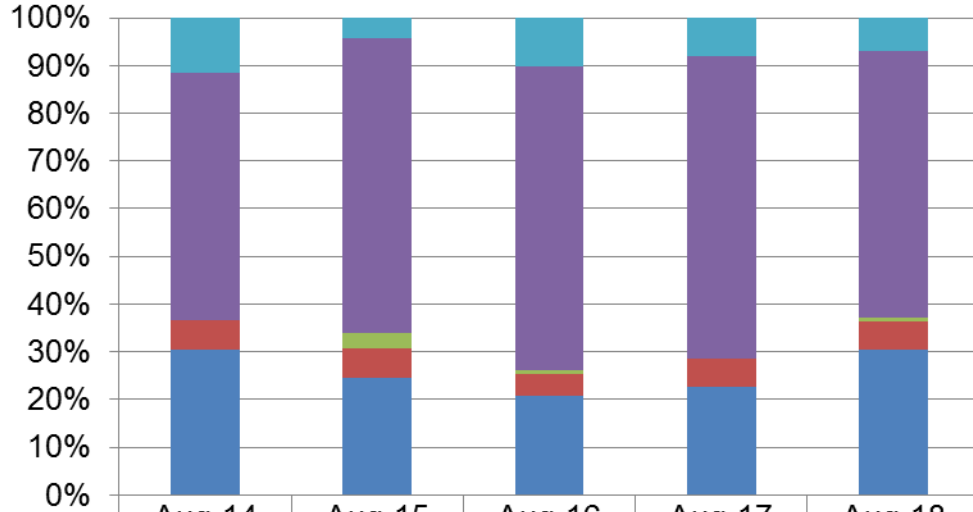
|        | Cats | Dogs | Others | Total |
|--------|------|------|--------|-------|
| Aug-14 | 364  | 171  | 66     | 601   |
| Aug-15 | 332  | 150  | 52     | 534   |
| Aug-16 | 256  | 101  | 54     | 411   |
| Aug-17 | 261  | 201  | 33     | 495   |
| Aug-18 | 239  | 202  | 80     | 521   |

### Intake Year to Date



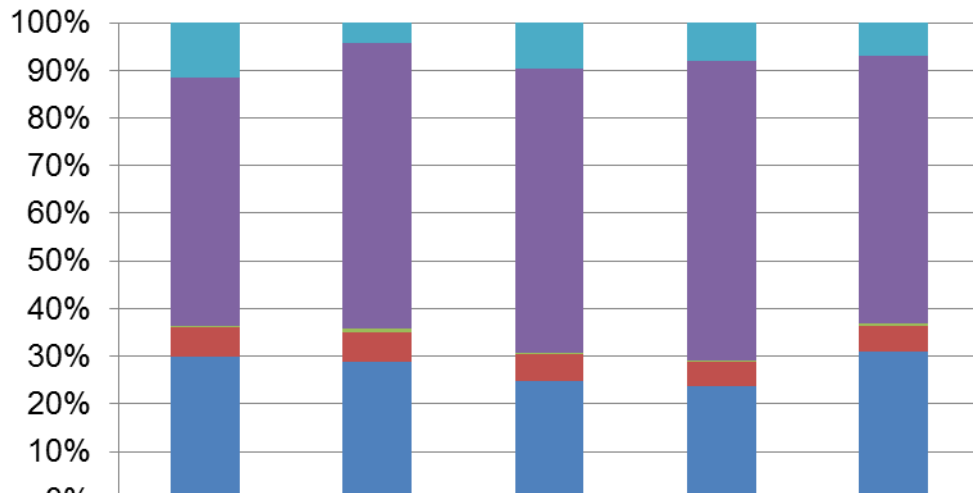
|      | Cats | Dogs | Others | Total |
|------|------|------|--------|-------|
| 2014 | 2035 | 1219 | 508    | 3762  |
| 2015 | 1855 | 1146 | 480    | 3481  |
| 2016 | 1623 | 1277 | 292    | 3192  |
| 2017 | 1527 | 1429 | 281    | 3237  |
| 2018 | 1566 | 1427 | 796    | 3789  |

### Intakes by Percentage Cats - August



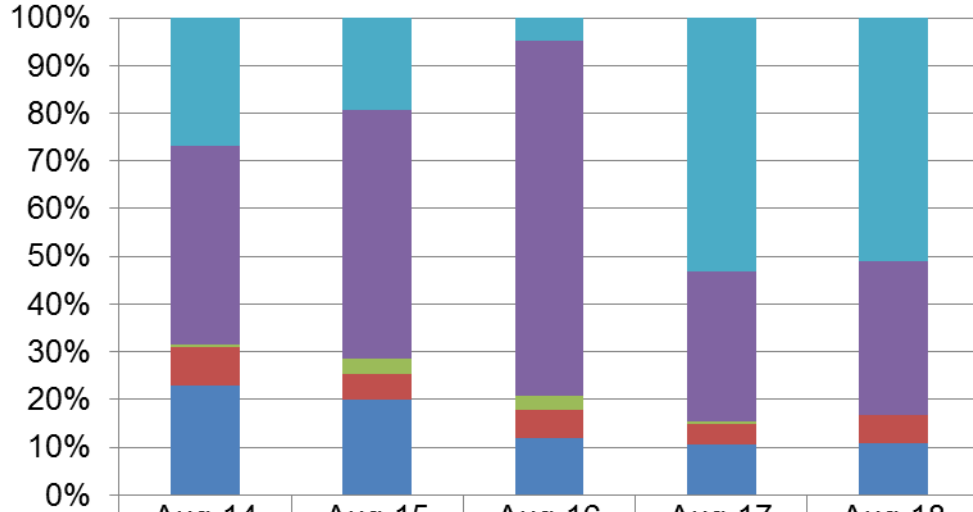
|                    | Aug-14 | Aug-15 | Aug-16 | Aug-17 | Aug-18 |
|--------------------|--------|--------|--------|--------|--------|
| Incoming Transfers | 11.60% | 4.20%  | 9.61%  | 8.12%  | 7.09%  |
| Strays             | 52.14% | 59.95% | 59.77% | 62.87% | 56.00% |
| Seized / Custody   | 0.00%  | 3.01%  | 0.78%  | 0.00%  | 0.84%  |
| Returns            | 6.32%  | 6.02%  | 4.30%  | 5.75%  | 5.86%  |
| Owner Surrenders   | 30.49% | 23.80% | 19.53% | 22.61% | 30.54% |

### Intakes by Percentage Cats - Year to Date



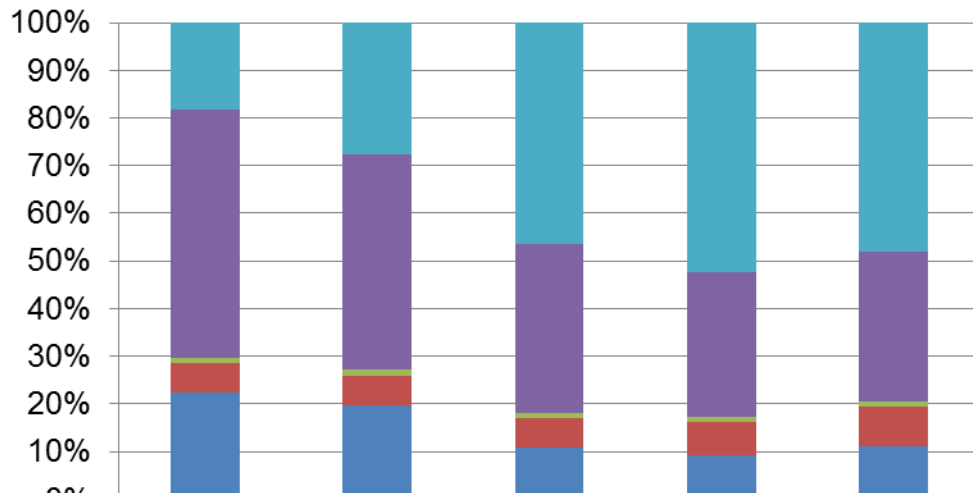
|                    | Aug-14 | Aug-15 | Aug-16 | Aug-17 | Aug-18 |
|--------------------|--------|--------|--------|--------|--------|
| Incoming Transfers | 11.60% | 4.20%  | 9.61%  | 8.12%  | 7.09%  |
| Strays             | 52.14% | 59.95% | 59.77% | 62.87% | 56.00% |
| Seized / Custody   | 0.29%  | 0.75%  | 0.25%  | 0.20%  | 0.57%  |
| Returns            | 6.14%  | 6.15%  | 5.67%  | 5.17%  | 5.30%  |
| Owner Surrenders   | 29.83% | 28.95% | 24.71% | 23.64% | 31.03% |

### Intakes by Percentage Dogs - August



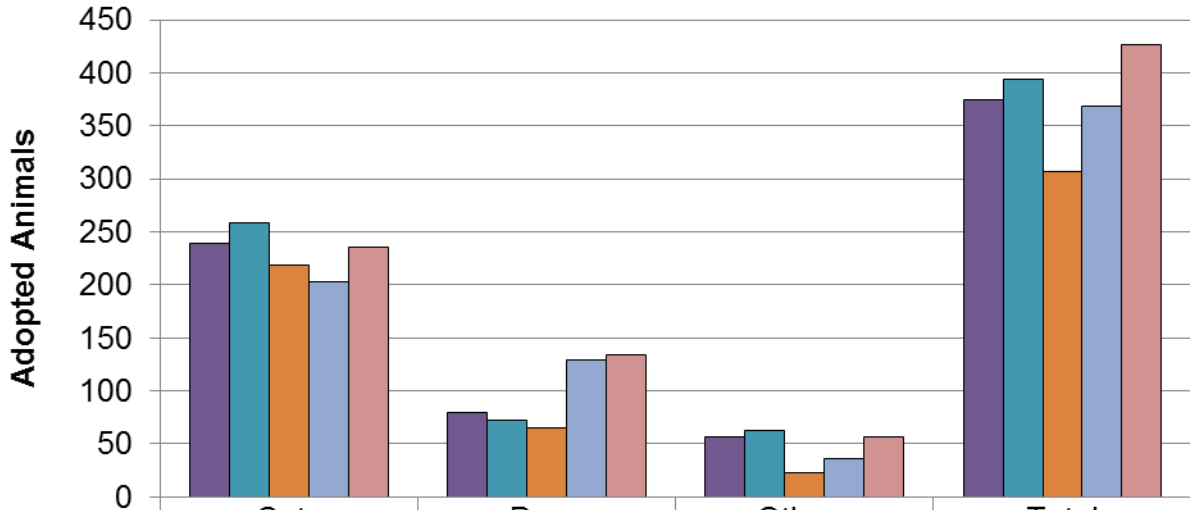
|                    | Aug-14 | Aug-15 | Aug-16 | Aug-17 | Aug-18 |
|--------------------|--------|--------|--------|--------|--------|
| Incoming Transfers | 26.90% | 19.33% | 4.95%  | 53.23% | 50.99% |
| Strays             | 41.52% | 52.00% | 74.26% | 31.34% | 32.18% |
| Seized / Custody   | 0.58%  | 3.33%  | 2.97%  | 0.50%  | 0.00%  |
| Returns            | 8.19%  | 5.33%  | 5.94%  | 4.48%  | 5.94%  |
| Owner Surrenders   | 22.81% | 20.00% | 11.88% | 10.45% | 10.89% |

### Intakes by Percentage Dogs - Year to Date



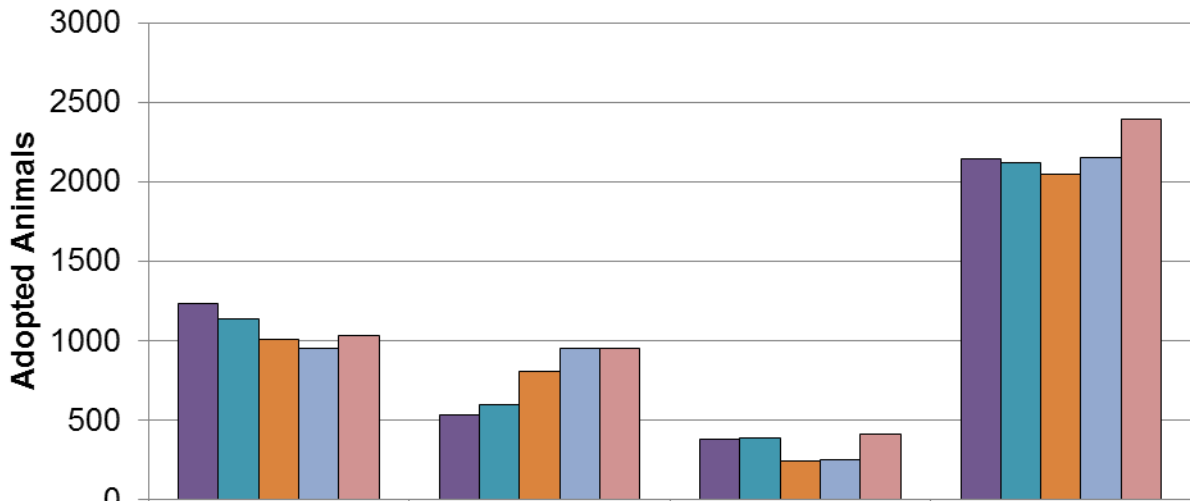
|                    | Aug-14 | Aug-15 | Aug-16 | Aug-17 | Aug-18 |
|--------------------|--------|--------|--------|--------|--------|
| Incoming Transfers | 18.38% | 27.57% | 46.44% | 52.48% | 48.14% |
| Strays             | 52.09% | 45.29% | 35.55% | 30.23% | 31.46% |
| Seized / Custody   | 0.90%  | 1.22%  | 0.94%  | 1.19%  | 0.91%  |
| Returns            | 6.23%  | 6.28%  | 6.19%  | 6.93%  | 8.27%  |
| Owner Surrenders   | 22.40% | 19.63% | 10.88% | 9.17%  | 11.21% |

### Adoptions August



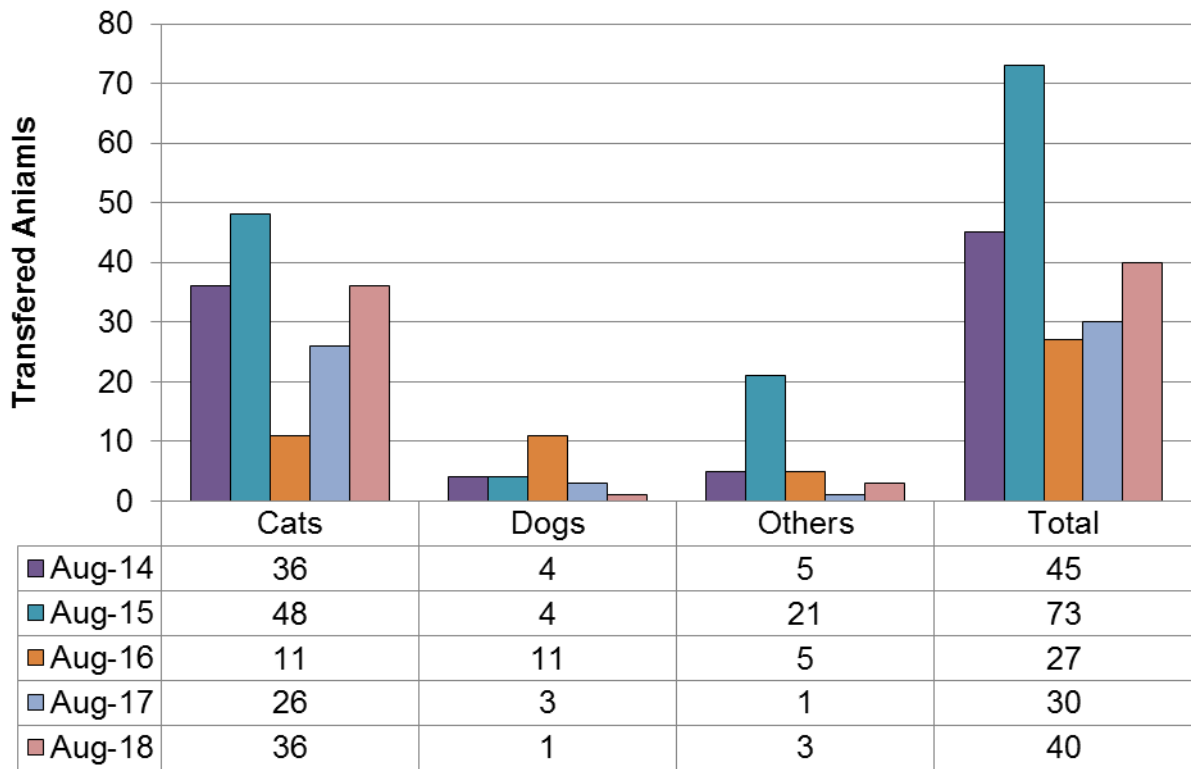
|        | Cats | Dogs | Others | Total |
|--------|------|------|--------|-------|
| Aug-14 | 239  | 79   | 56     | 374   |
| Aug-15 | 259  | 72   | 63     | 394   |
| Aug-16 | 219  | 65   | 23     | 307   |
| Aug-17 | 203  | 129  | 36     | 368   |
| Aug-18 | 236  | 134  | 57     | 427   |

### Adoptions Year to Date

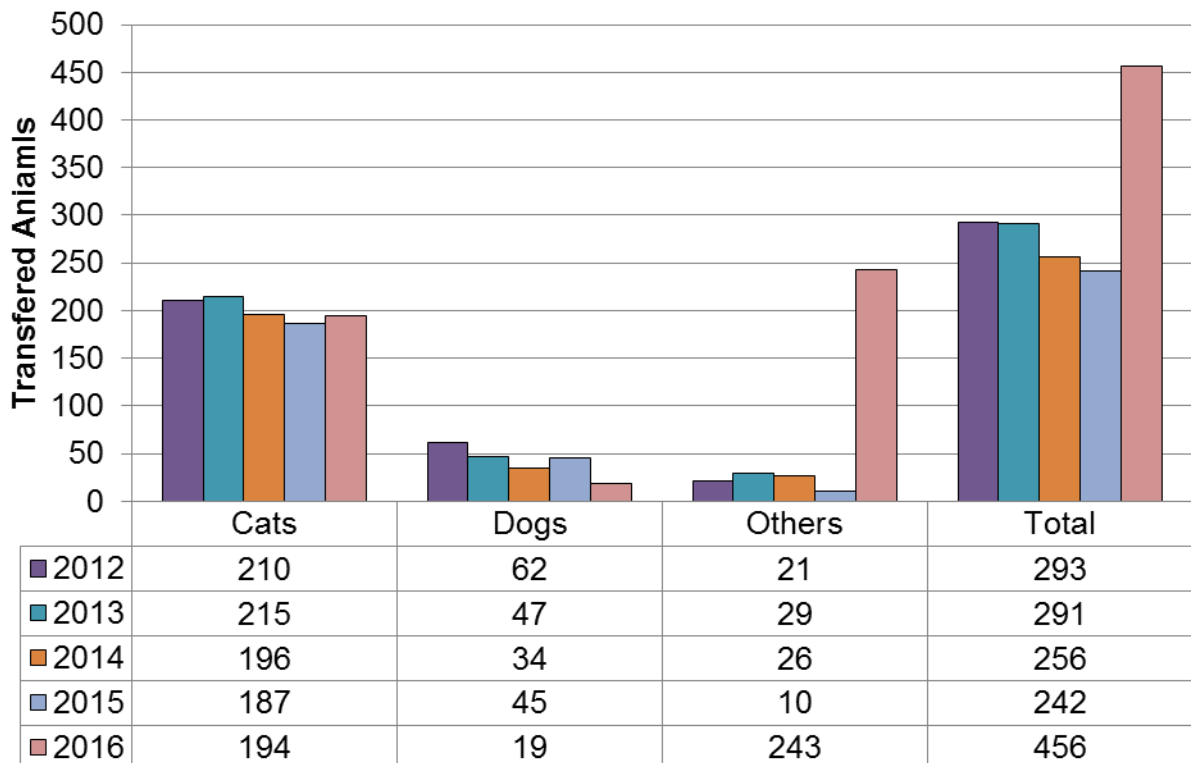


|      | Cats | Dogs | Others | Total |
|------|------|------|--------|-------|
| 2014 | 1233 | 532  | 374    | 2139  |
| 2015 | 1138 | 595  | 387    | 2120  |
| 2016 | 1004 | 807  | 238    | 2049  |
| 2017 | 949  | 948  | 252    | 2149  |
| 2018 | 1030 | 952  | 406    | 2388  |

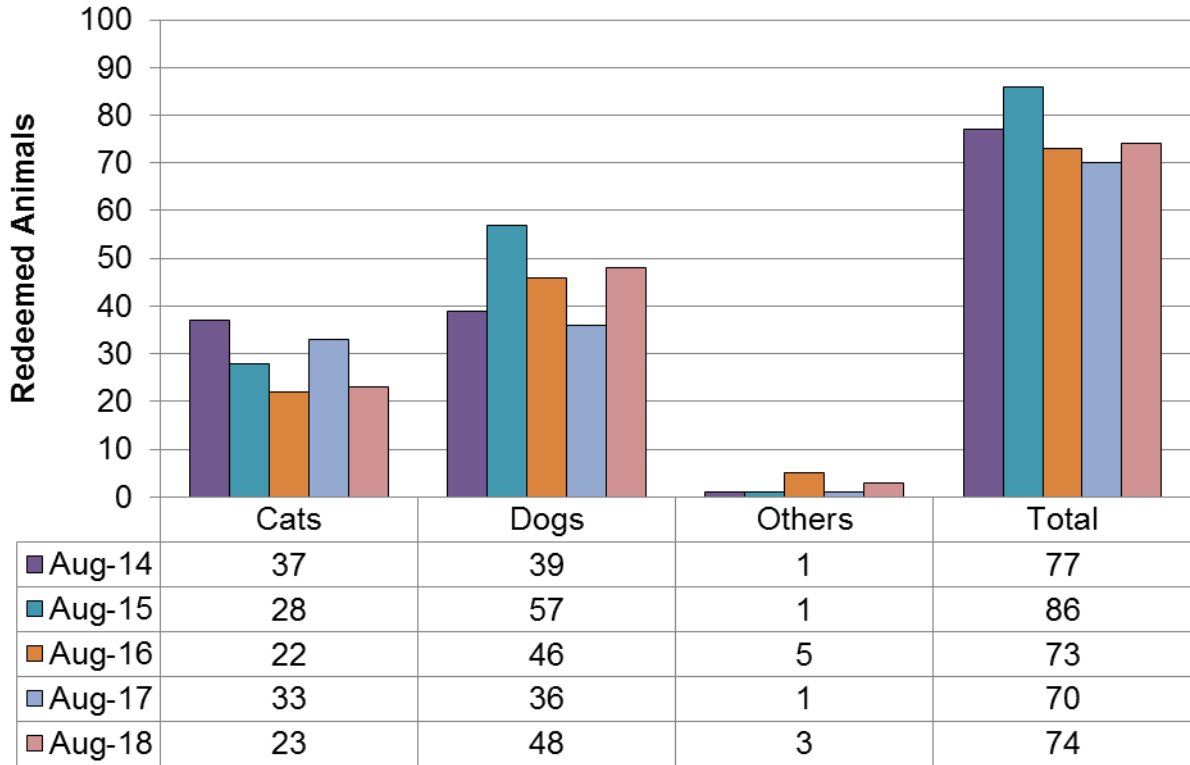
### Outgoing Transfers August



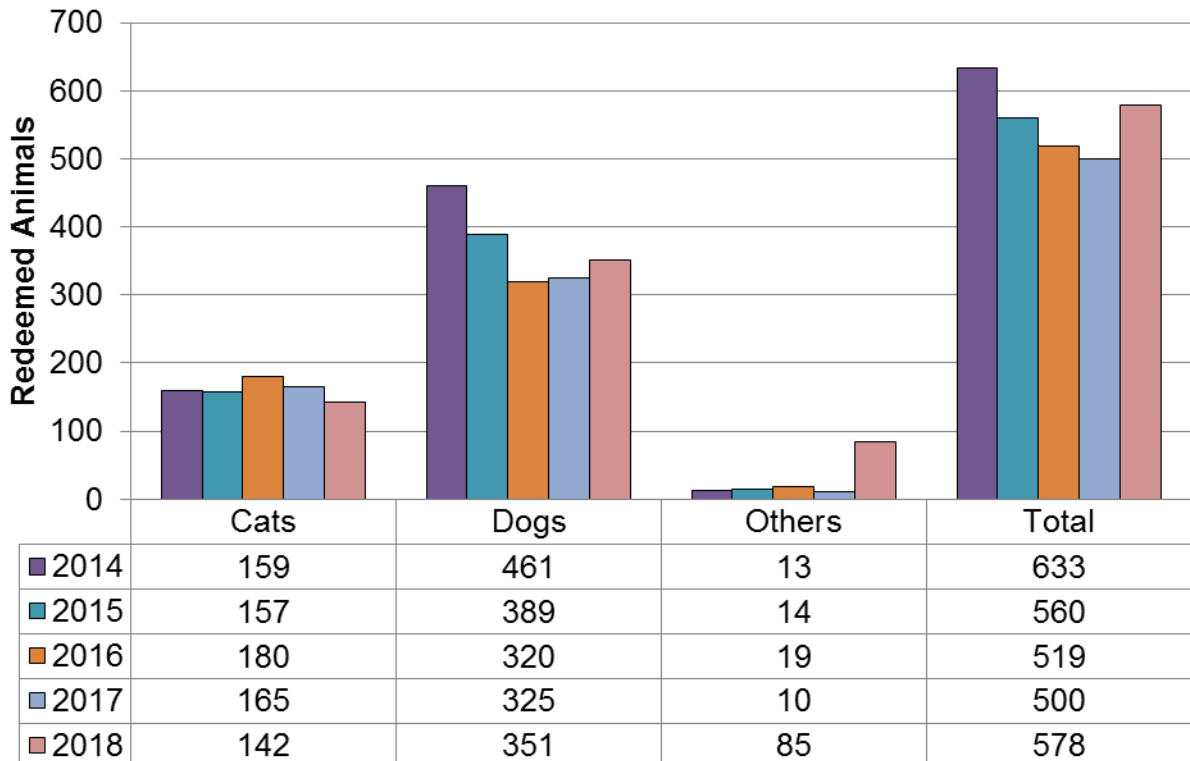
### Outgoing Transfers Year to Date



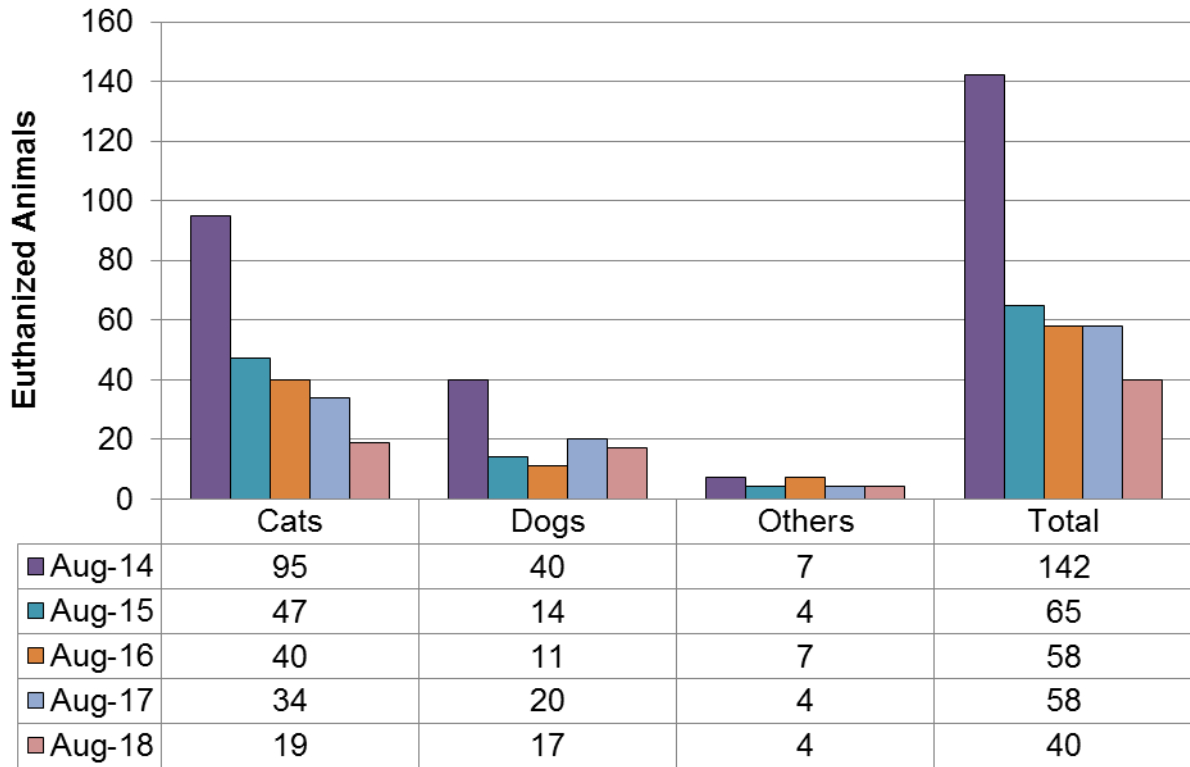
### Redemptions August



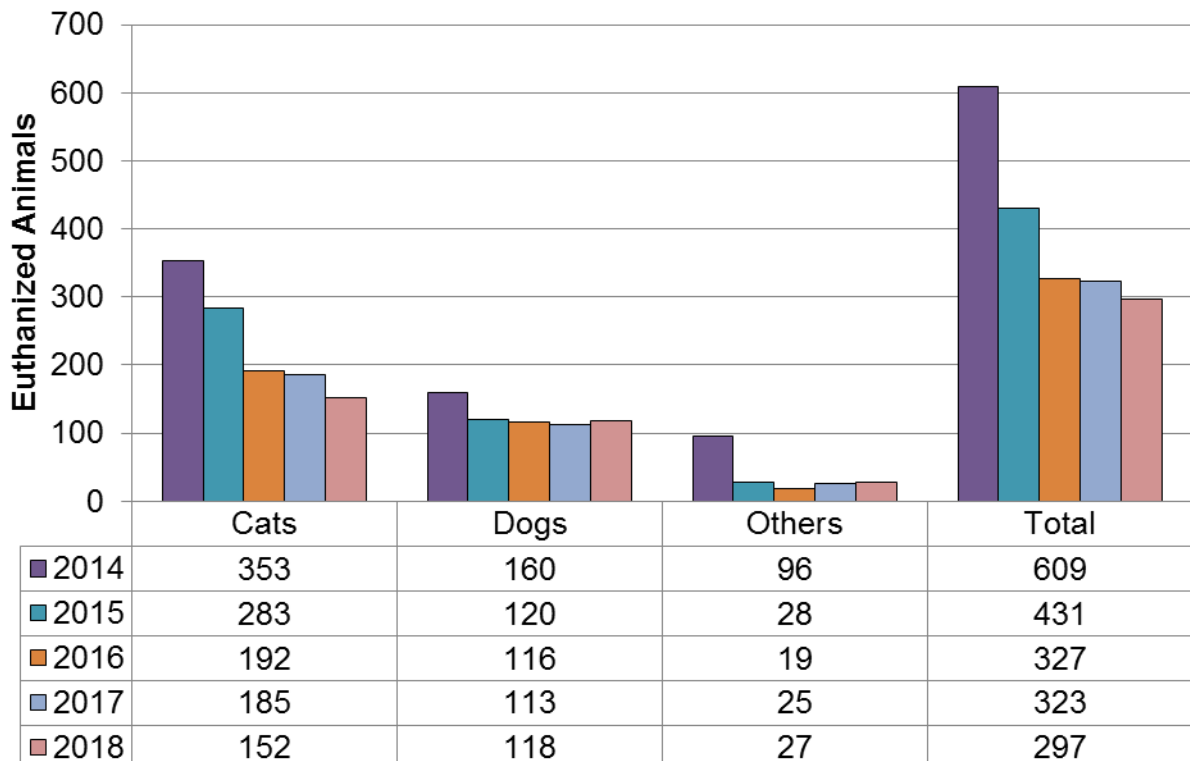
### Redemptions Year to Date



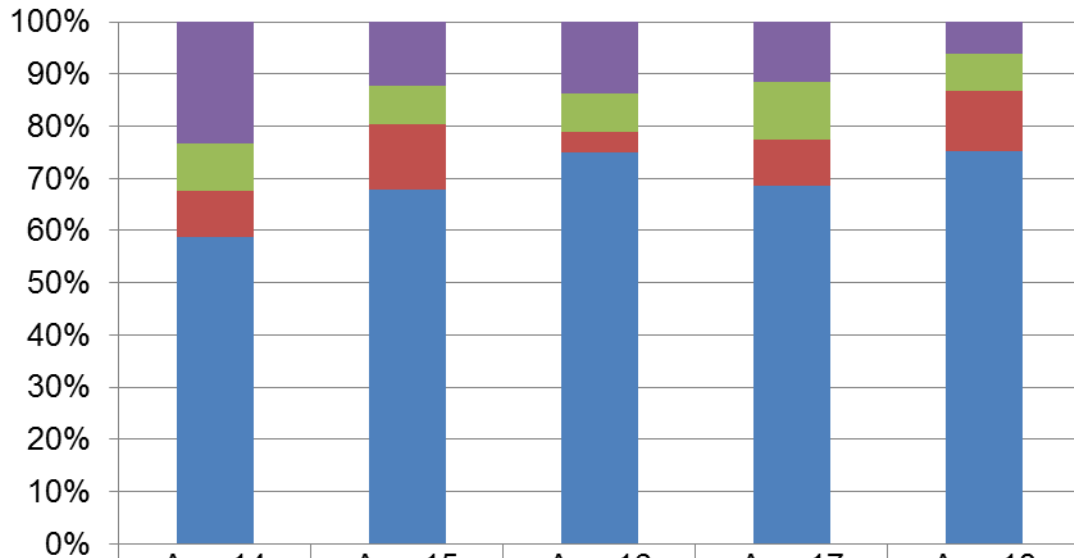
## Euthanasia August



## Euthanasia Year to Date

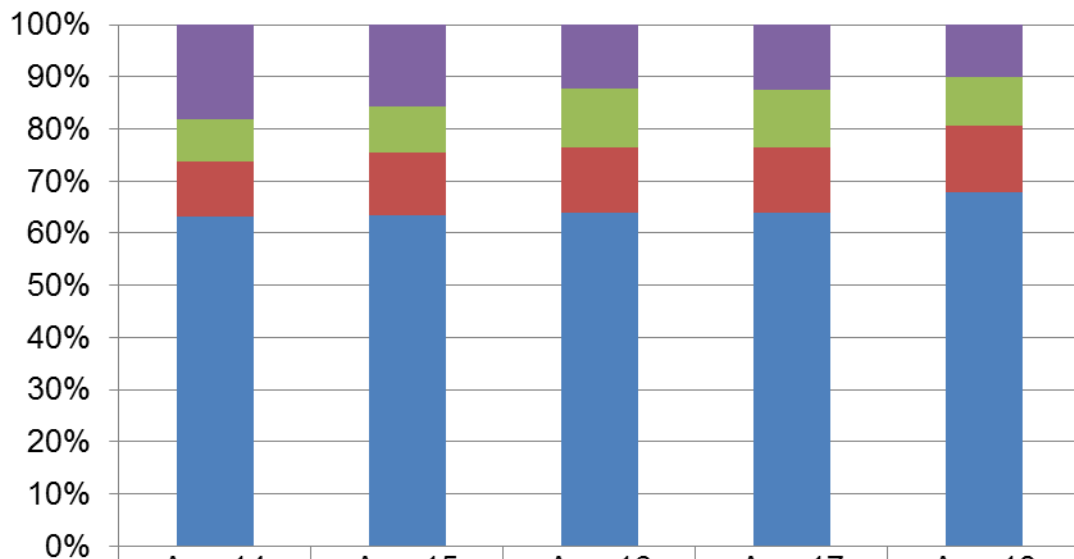


### Outcomes by Percentage Cats - August



|              | Aug-14 | Aug-15 | Aug-16 | Aug-17 | Aug-18 |
|--------------|--------|--------|--------|--------|--------|
| ■ Euthanasia | 23.34% | 12.30% | 13.70% | 11.49% | 6.05%  |
| ■ Redemption | 9.09%  | 7.33%  | 7.53%  | 11.15% | 7.32%  |
| ■ Transfer   | 8.85%  | 12.57% | 3.77%  | 8.78%  | 11.46% |
| ■ Adoption   | 58.72% | 67.80% | 75.00% | 68.58% | 75.16% |

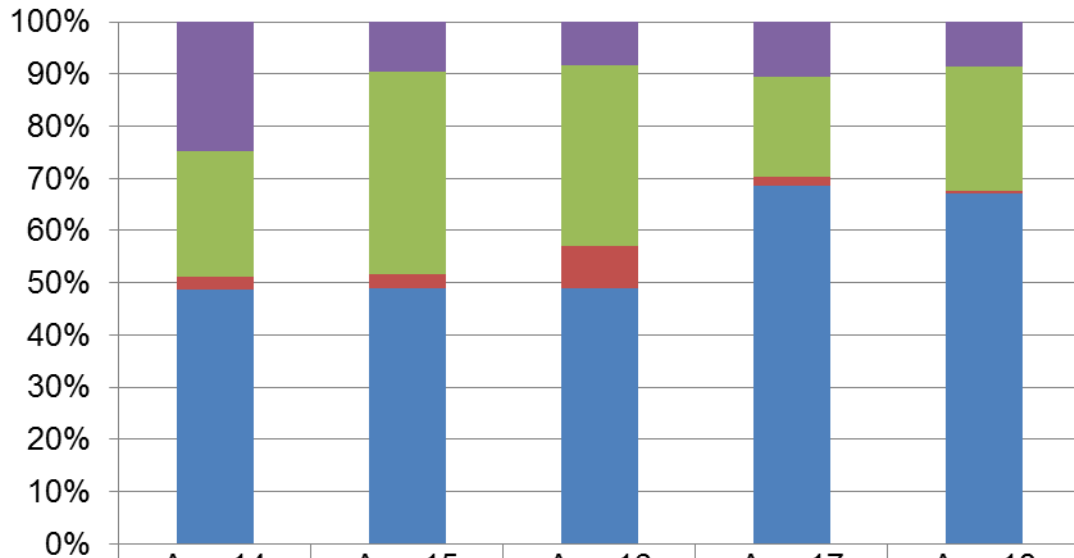
### Outcomes by Percentage Cats - Year to Date



|              | Aug-14 | Aug-15 | Aug-16 | Aug-17 | Aug-18 |
|--------------|--------|--------|--------|--------|--------|
| ■ Euthanasia | 18.06% | 15.78% | 12.21% | 12.45% | 10.01% |
| ■ Redemption | 8.13%  | 8.76%  | 11.45% | 11.10% | 9.35%  |
| ■ Transfer   | 10.74% | 11.99% | 12.47% | 12.58% | 12.78% |
| ■ Adoption   | 63.07% | 63.47% | 63.87% | 63.86% | 67.85% |

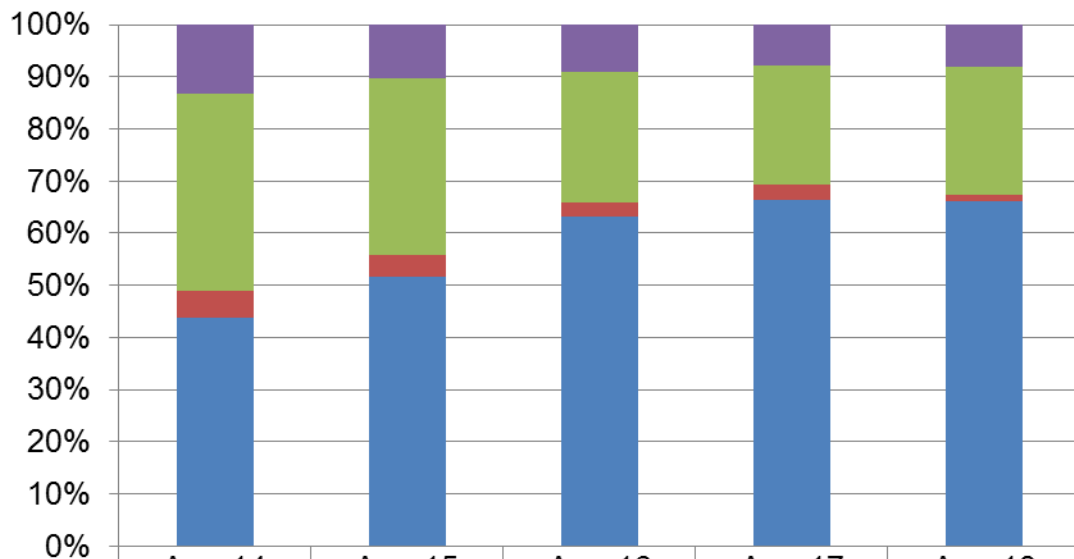


### Outcomes by Percentage Dogs - August



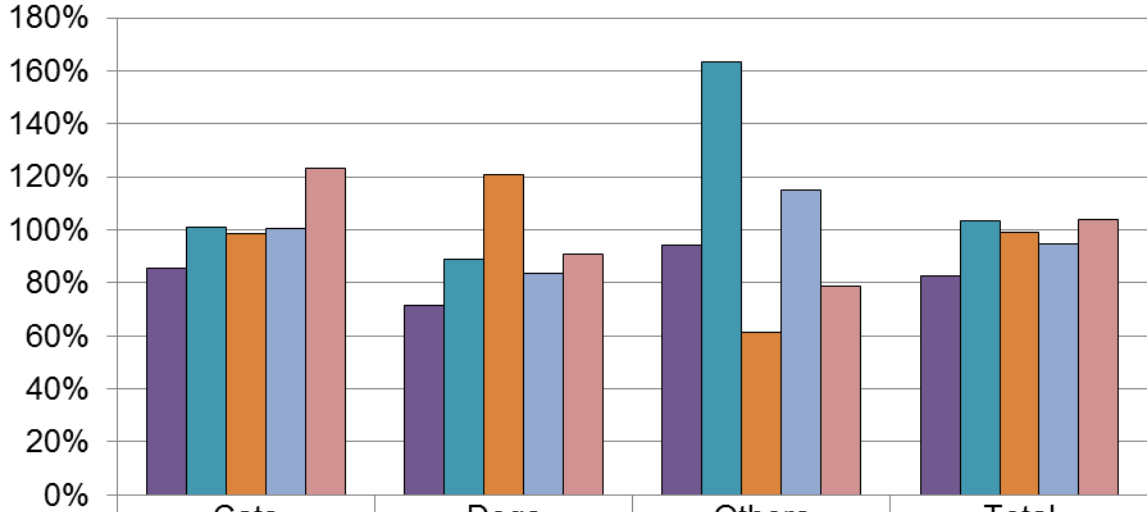
|              | Aug-14 | Aug-15 | Aug-16 | Aug-17 | Aug-18 |
|--------------|--------|--------|--------|--------|--------|
| ■ Euthanasia | 24.69% | 9.52%  | 8.27%  | 10.64% | 8.50%  |
| ■ Redemption | 24.07% | 38.78% | 34.59% | 19.15% | 24.00% |
| ■ Transfer   | 2.47%  | 2.72%  | 8.27%  | 1.60%  | 0.50%  |
| ■ Adoption   | 48.77% | 48.98% | 48.87% | 68.62% | 67.00% |

### Outcomes by Percentage Dogs - Year to Date



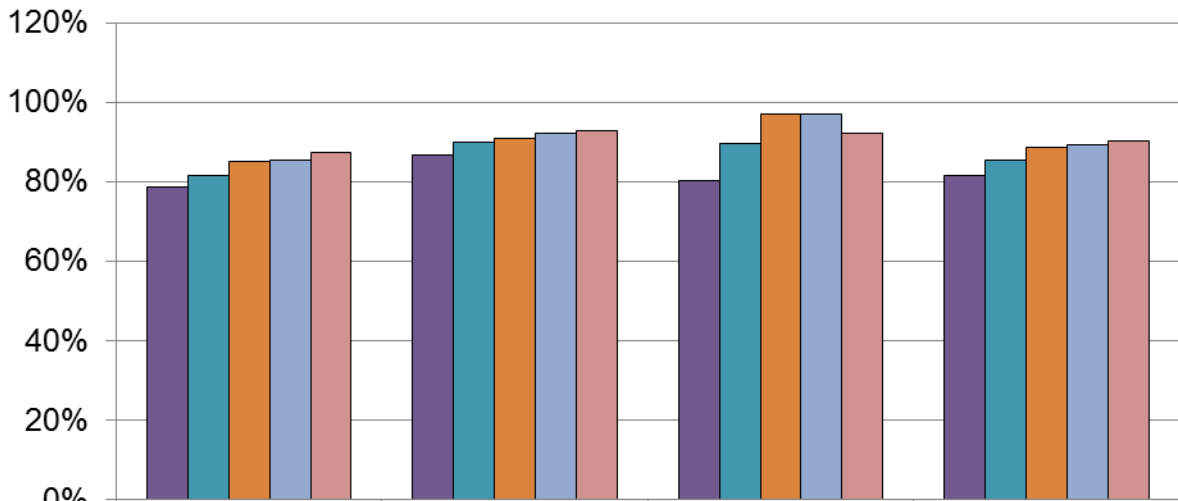
|              | Aug-14 | Aug-15 | Aug-16 | Aug-17 | Aug-18 |
|--------------|--------|--------|--------|--------|--------|
| ■ Euthanasia | 13.17% | 10.43% | 9.08%  | 7.90%  | 8.19%  |
| ■ Redemption | 37.94% | 33.80% | 25.06% | 22.71% | 24.38% |
| ■ Transfer   | 5.10%  | 4.08%  | 2.66%  | 3.14%  | 1.32%  |
| ■ Adoption   | 43.79% | 51.69% | 63.19% | 66.25% | 66.11% |

### Save Rate August



|        | Cats | Dogs | Others | Total |
|--------|------|------|--------|-------|
| Aug-14 | 86%  | 71%  | 94%    | 83%   |
| Aug-15 | 101% | 89%  | 163%   | 104%  |
| Aug-16 | 98%  | 121% | 61%    | 99%   |
| Aug-17 | 100% | 84%  | 115%   | 95%   |
| Aug-18 | 123% | 91%  | 79%    | 104%  |

### Save Rate Year to Date



|      | Cats | Dogs | Others | Total |
|------|------|------|--------|-------|
| 2014 | 79%  | 87%  | 80%    | 81%   |
| 2015 | 81%  | 90%  | 90%    | 85%   |
| 2016 | 85%  | 91%  | 97%    | 88%   |
| 2017 | 85%  | 92%  | 97%    | 89%   |
| 2018 | 87%  | 93%  | 92%    | 90%   |

## Terms and Definitions:

**Adoption** – The placement of an animal with a new owner/family.

**Euthanasia** – The act of putting an animal to death painlessly.

**Euthanasia Rate** – The percentage of animals euthanized during a given time period. For statistical purposes, this number does not include animals admitted specifically for euthanasia.

$$\text{Euthanasia Rate} = \text{Euthanasia} / (\text{Intake} + \text{Inventory})$$

**Intake** – The number of live animals admitted. For statistical purposes, this number does not include animals admitted specifically for euthanasia.

**Live Release Rate** – The percentage of live animals released by means of adoption, redemption and transfer during a given time period. The difference between Live Release Rate and Save Rate (see Save Rate) is that Live Release Rate takes into account the starting animal inventory for the given time period. This results in a more accurate reflection of live release versus population. DCHS started using Live Release Rate in 2008.

$$\text{Live Release Rate} = (\text{Adoptions} + \text{Redemptions} + \text{Transfers}) / (\text{Intake} + \text{Inventory})$$

**Redemption** – The reclaiming of an animal by an existing or previous owner.

**Rolling Release Rate** – A compilation of Live Release Rate, Euthanasia Rate and Sanctuary Rate.

**Sanctuary Rate** – The percentage of animals remaining in the shelter's care at the end of a given time period.

$$\text{Sanctuary Rate} = ((\text{Inventory} + \text{Intake}) - (\text{Adoptions} + \text{Redemptions} + \text{Transfers} + \text{Euthanasia})) / (\text{Intake} + \text{Inventory})$$

**Save Rate** – The percentage of live animals released by means of adoption, redemption and transfer during a given time period. Save Rate is an older and previously widely used formula for calculating a shelter's success but does not include the starting animal inventory for the given time period. This results in a less accurate reflection of live release versus population and could even generate percentages above 100% (for example if during a given time period 10 animals were adopted but only 5 were admitted, the Save Rate would equal 200% because the existing inventory of 5+ animals are not taken into consideration). Save Rate is still commonly used by shelters and is still calculated at DCHS for the purpose of comparisons to other shelter that still use Save Rate and for comparison to past years before Live Release Rate started to be calculated in 2008.

$$\text{Save Rate} = (\text{Adoption} + \text{Redemptions} + \text{Transfers}) / \text{Intake}$$

**Transfer** – The placement of an animal with another animal welfare organization.